





£700,000

Set in a highly desirable location in LEVERSTOCK GREEN, this well proportioned three bedroom detached house is in need of modernisation throughout, offering a fantastic opportunity to create a wonderful family home. Briefly comprising lounge, dining room, downstairs shower room, kitchen, family bathroom, garage & driveway parking and private rear garden, the property could also be extended (STPP).

Property Description

ENTRANCE PORCH

Double glazed UPVC porch.

ENTRANCE HALL

Stairs to first floor, storage cupboard and understairs storage cupboard, radiator, doors to lounge, dining room and kitchen.

LOUNGE

Double glazed bay window to front aspect. Two radiators, gas feature fireplace.

DINING ROOM

Double glazed window to side aspect, window and door to rear aspect. Radiator.

KITCHEN

Double glazed window to rear aspect. Range of wall mounted and floor standing units with roll edge work surface over, breakfast bar, stainless steel sink with mixer tap, integrated oven and five ring gas hob with extractor over, integrated dishwasher, space for fridge/freezer, cupboard housing gas boiler, towel radiator, storage cupboard, door to passageway.

PASSAGEWAY

Door to front aspect, door to garage, glazed door to rear aspect, door to shower room.

SHOWER ROOM

Frosted double glazed window to rear aspect. Low level w.c., pedestal wash hand basin, shower unit, part tiled walls.

LANDING

Frosted double glazed window to side aspect. Airing cupboard housing hot water cylinder, access to loft space, doors to all rooms.

BEDROOM ONE

Double glazed window to front aspect. Range of built in wardrobes, radiator.

BEDROOM TWO

Double glazed window to side aspect. Built in storage cupboard, radiator.

BEDROOM THREE

Double glazed window to side aspect. Built in storage cupboard, radiator.

BATHROOM

Frosted double glazed window to rear aspect. Pedestal wash hand basin, panelled bath, part tiled walls, radiator.

SEPARATE W.C.

Frosted double glazed window to side aspect. Low level w.c.

OUTSIDE

GARAGE & PARKING

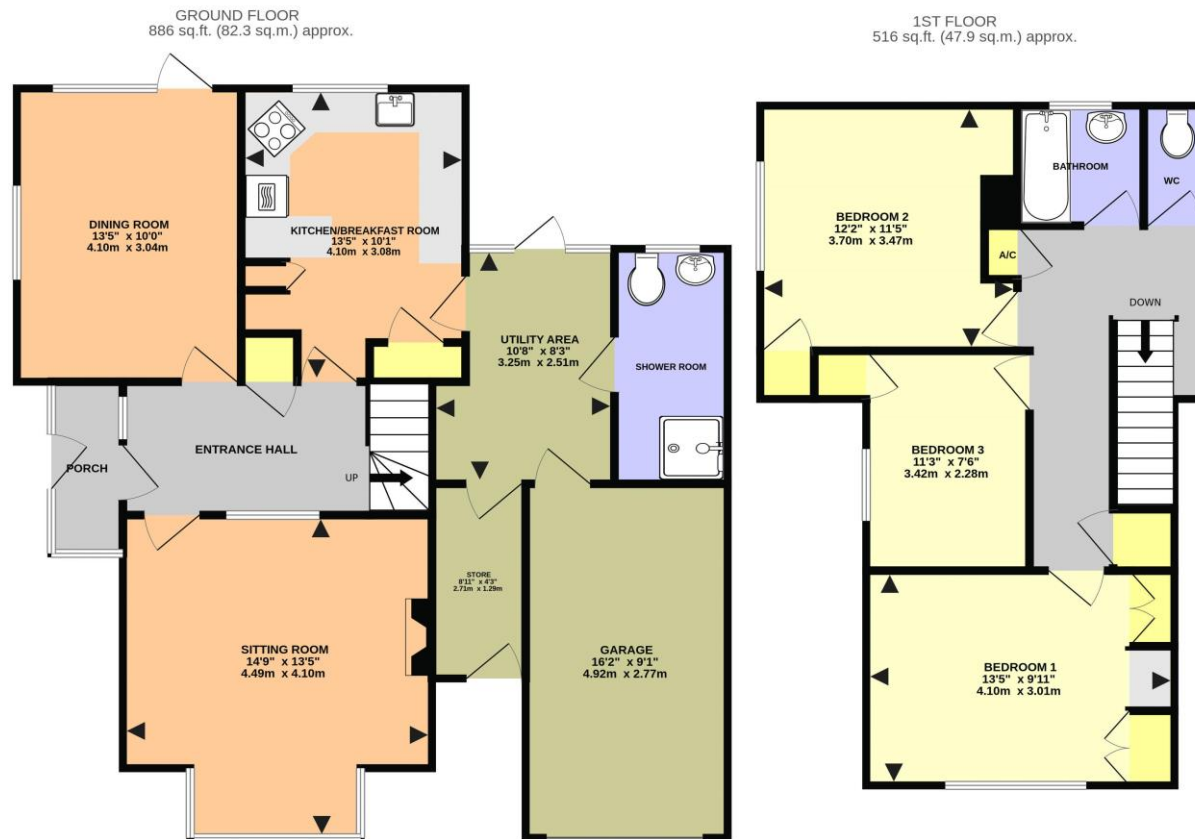
Garage with up and over door, power and light, driveway providing off road parking for several cars.

FRONT GARDEN

Mainly laid to lawn, pathway to front door, flower and shrub beds.

REAR GARDEN

Mainly laid to lawn with patio area, mature trees, gated access to front, timber



MALMES CROFT, HEMEL HEMPSTEAD HP3 8QX (PRODUCED FOR MICHAEL ANTHONY)

TOTAL FLOOR AREA : 1402 sq.ft. (130.2 sq.m.) approx.

No accuracy to this image, text or measurements is guaranteed
Made with Metropix ©2025

MONEY LAUNDERING REGULATIONS 2017 intending purchasers will be asked to produce identification and proof of financial status when an offer is received. We would ask for your co-operation in order that there will be no delay in agreeing the sale.

THE CONSUMER PROTECTION REGULATIONS 2008 The Agent has not tested any apparatus, equipment, fixtures and fittings or services and so cannot verify that they are in working order or fit for the purpose. A Buyer is advised to obtain verification from their Solicitor or Surveyor. References to the Tenure of a Property are based on information supplied by the Seller. The Agent has not had sight of the title documents. A Buyer is advised to obtain verification from their Solicitor. You are advised to check the availability of this property before travelling any distance to view. We have taken every precaution to ensure that these details are accurate and not misleading. If there is any point which is of particular importance to you, please contact us and we will provide any information you require. This is advisable, particularly if you intend to travel some distance to view the property. The mention of any appliances and services within these details does not imply that they are in full and efficient working order. These particulars are in draft form awaiting Vendors confirmation of their accuracy. These details must therefore be taken as a guide only and approved details should be requested from the agents

33 Marlowes Hemel Hempstead Herts HP1 1LA
01442 260025 | hemel@maea.co.uk