





£250,000

This charming one bedroom ground floor maisonette, set in a secluded location close to the heart of Hemel Hempstead comprises one double bedroom, modern kitchen, wet room and a lounge with patio doors opening onto a lovely, low maintenance garden. Additionally, the property benefits from one allocated parking space and is SHARE OF FREEHOLD.

Property Description

ENTRANCE

Part glazed composite door to:

ENTRANCE HALL

Two storage cupboards, radiator. Doors to all rooms

BEDROOM ONE

Double glazed window to side aspect, radiator.

BATHROOM

Frosted double glazed window to side aspect, low level WC, Hand wash basin, shower. Extractor fan, tiled walls.

LOUNGE

Double glazed sliding patio doors leading to garden, radiator, opening to kitchen.

KITCHEN

Double glazed window to side aspect, range of floor and wall mounted units with roll-edged worktops over, stainless steel sink with drainer, integrated double oven and gas hob with extractor fan over, space for fridge freezer, space for washing machine. Tiled splashbacks and tiled floor.

OUTSIDE

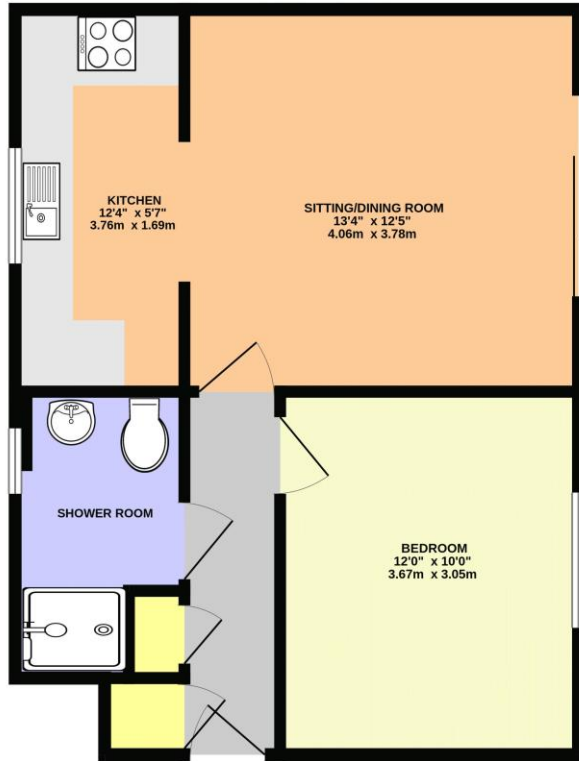
REAR GARDEN

Accessed from the lounge, the low maintenance garden is landscaped with patio and shingled areas, bordered with hedging and gated access to the parking.

PARKING

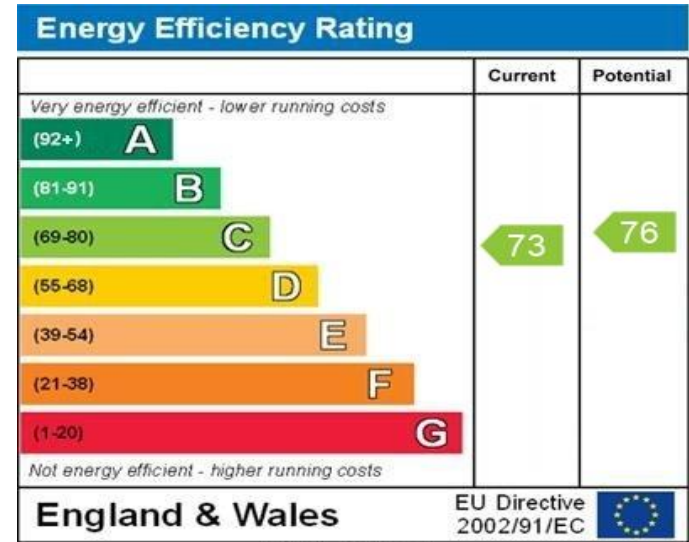
Car park to the front of the property with one allocated space and two communal visitor spaces.

GROUND FLOOR



BURY GREEN, HEMEL HEMPSTEAD HP1 1XP (PRODUCED FOR MICHAEL ANTHONY)

TOTAL FLOOR AREA: 446 sq. ft. (41.4 sq. m.) approx.
No accuracy to this image, text or measurements is guaranteed
Made with Metropix ©2024



WWW.EPC4U.COM

MONEY LAUNDERING REGULATIONS 2017 intending purchasers will be asked to produce identification and proof of financial status when an offer is received. We would ask for your co-operation in order that there will be no delay in agreeing the sale.

THE CONSUMER PROTECTION REGULATIONS 2008 The Agent has not tested any apparatus, equipment, fixtures and fittings or services and so cannot verify that they are in working order or fit for the purpose. A Buyer is advised to obtain verification from their Solicitor or Surveyor. References to the Tenure of a Property are based on information supplied by the Seller. The Agent has not had sight of the title documents. A Buyer is advised to obtain verification from their Solicitor. You are advised to check the availability of this property before travelling any distance to view. We have taken every precaution to ensure that these details are accurate and not misleading. If there is any point which is of particular importance to you, please contact us and we will provide any information you require. This is advisable, particularly if you intend to travel some distance to view the property. The mention of any appliances and services within these details does not imply that they are in full and efficient working order. These particulars are in draft form awaiting Vendors confirmation of their accuracy. These details must therefore be taken as a guide only and approved details should be requested from the agents

33 Marlowes Hemel Hempstead Herts HP1 1LA
01442 260025 | hemel@maea.co.uk