





**Offers in the Region
Of £290,000**

Rarely available, this superbly presented two double bedroom apartment is offered with a long lease and share of freehold. Comprising a spacious lounge dining room with feature fireplace, fitted kitchen, a master bedroom with en-suite shower room and luxury bathroom. The apartment benefits from security intercom, UPVC double glazing and gas central heating to radiators, with well maintained communal gardens and allocated and visitors parking. All located just a short walk of Hemel old town and the town centre. As well as being close to Gadebridge Park.

Property Description

Entrance

Front door with security entrance system opens to the communal hallway, stairs to all floors.

Entrance Hall

Front door opens to the entrance hall, entry phone, storage cupboard, access via a pull down ladder to an insulated loft with light.

Lounge/Diner

A spacious room with lovely high ceilings and feature fireplace with inset electric fire, double glazed walk in bay window to the front, further double glazed window, radiator, TV point.

Kitchen

Fitted with a range of base and eye level storage units, work surface areas with an inset single drainer stainless steel sink unit with mixer tap set below a double glazed window, wall mounted Vaillant combination gas boiler, plumbing and space for a washing machine, tiled surrounds.

Bedroom One

A double bedroom with a double glazed window to the rear, radiator.

Ensuite

A luxury three piece suite comprising a low level WC, wash hand basin with mixer tap, tiled shower cubicle, heated towel rail, extractor fan and tiled surrounds.

Bedroom Two

A double bedroom with double glazed walk in bay window to the rear, radiator.

Bathroom

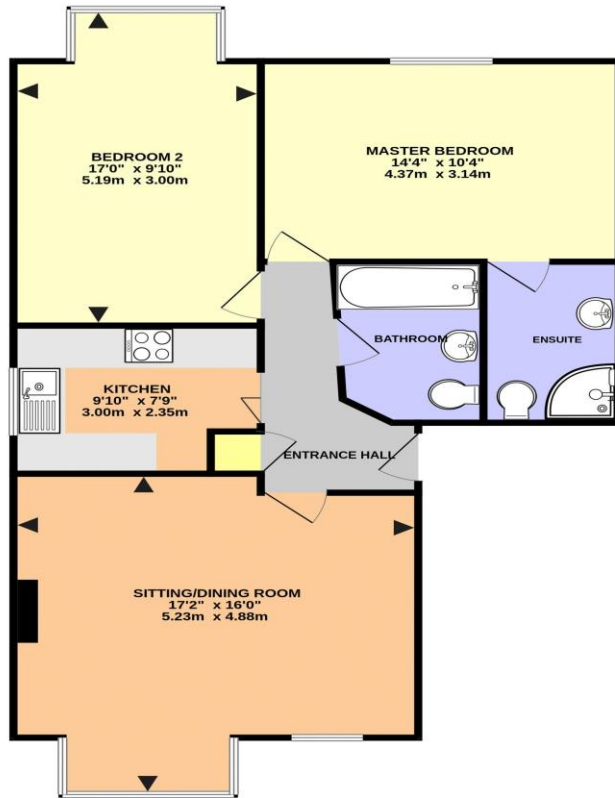
A three piece suite comprising a low level WC, wash hand basin with mixer tap, panel bath with mixer tap and shower over, tiled surrounds and flooring, extractor fan, heated towel rail.

Outside

Communal Gardens

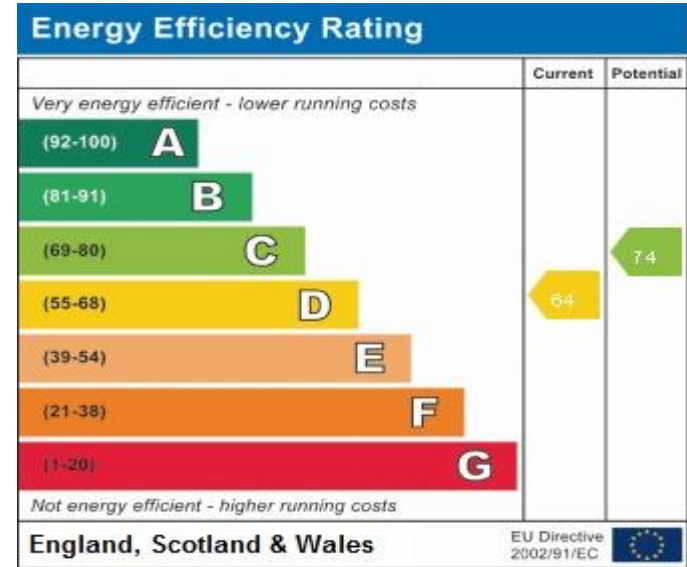
Parking

Allocated parking with further visitors space.



GADEBRIDGE COURT, HEMEL HEMPSTEAD HP1 3DP (PRODUCED FOR MICHAEL ANTHONY)

TOTAL FLOOR AREA : 769 sq.ft. (71.4 sq.m.) approx.
 No accuracy to this image, text or measurements is guaranteed
 Made with Metropix ©2024



MONEY LAUNDERING REGULATIONS 2017 intending purchasers will be asked to produce identification and proof of financial status when an offer is received. We would ask for your co-operation in order that there will be no delay in agreeing the sale.

THE CONSUMER PROTECTION REGULATIONS 2008 The Agent has not tested any apparatus, equipment, fixtures and fittings or services and so cannot verify that they are in working order or fit for the purpose. A Buyer is advised to obtain verification from their Solicitor or Surveyor. References to the Tenure of a Property are based on information supplied by the Seller. The Agent has not had sight of the title documents. A Buyer is advised to obtain verification from their Solicitor. You are advised to check the availability of this property before travelling any distance to view. We have taken every precaution to ensure that these details are accurate and not misleading. If there is any point which is of particular importance to you, please contact us and we will provide any information you require. This is advisable, particularly if you intend to travel some distance to view the property. The mention of any appliances and services within these details does not imply that they are in full and efficient working order. These particulars are in draft form awaiting Vendors confirmation of their accuracy. These details must therefore be taken as a guide only and approved details should be requested from the agents