





**Offers in the Region
Of £435,000**

Situated in this highly sought after Leverstock Green location, This larger than average family home boasts a spacious lounge with separate dining area, fitted kitchen, utility room, downstairs cloakroom, three double bedrooms and a modern family bathroom, with a southerly facing garden and located within easy reach of desired local schools, shops and the M1 motorway. Viewings highly advised.

Property Description

Entrance

Part glazed door leading to:

Entrance Hall

Doors to all rooms, Stairs rising to first floor, Radiator.

Cloakroom

Double glazed window, Low Level W.C, Wall mounted wash hand basin with tiled splash back. Wall mounted gas boiler.

Lounge

Double glazed bay window to front, Radiator.

Dining Room

Double glazed window to rear, Double glazed sliding patio doors to rear, Radiator.

Kitchen

Base and wall mounted units, built in oven, built in gas hob with extractor fan overhead, built in fridge, stainless steel sink with tap and drainer. Breakfast bar.

Utility room

Space for washing machine and Tumble dryer, Wood effect flooring.

Bedroom One

Double glazed window to front, Radiator.

Bedroom Two

Double glazed window to rear, built in storage cupboard, Radiator.

Bedroom Three

Double glazed window to front, Built in storage cupboard, Airing cupboard, Radiator.

Family Bathroom

Double glazed obscured window to rear, Low level W.C, Wash hand basin set in vanity unit, panelled bath with mixer taps and shower overhead. Partly tiled walls, tiled floor, Radiator.

Outside

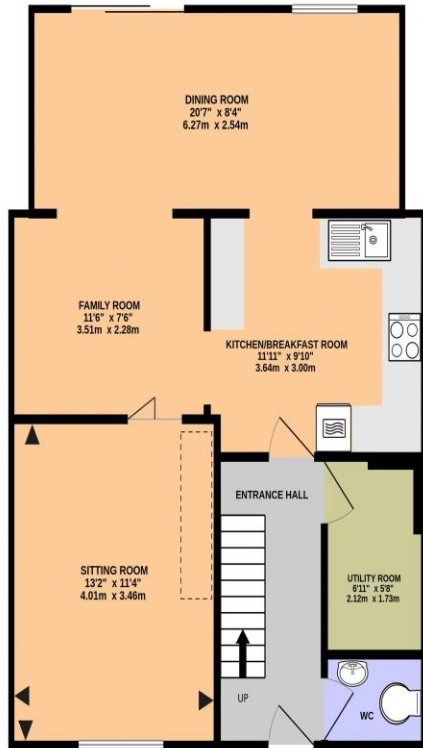
Driveway

Block paved driveway for two cars. Step leading to front door with storm porch over.

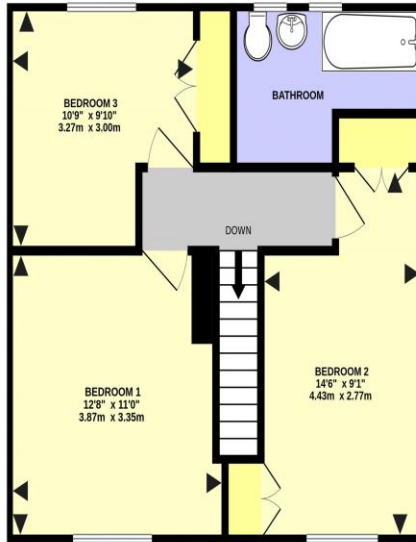
Rear Garden

Patio and Lawn areas.

GROUND FLOOR
654 sq.ft. (60.8 sq.m.) approx.

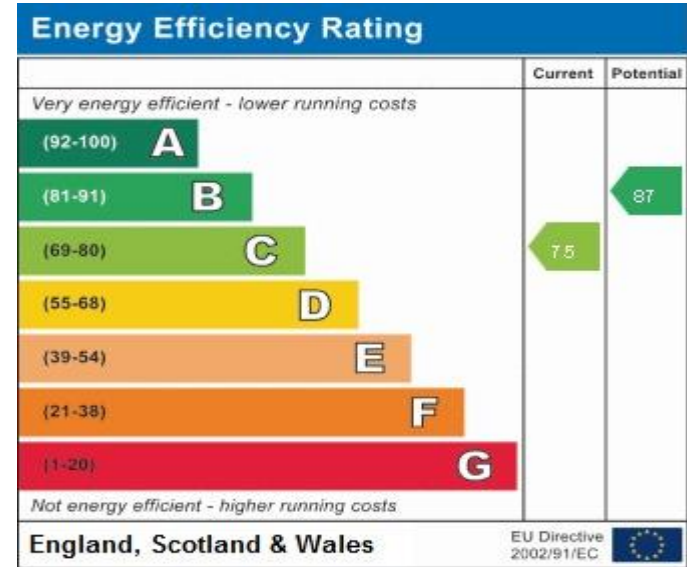


1ST FLOOR
484 sq.ft. (44.9 sq.m.) approx.



MICKLEFIELD ROAD, HEMEL HEMPSTEAD HP2 4PG (PRODUCED FOR MICHAEL ANTHONY)

TOTAL FLOOR AREA: 1138 sq.ft. (105.7 sq.m.) approx.
No accuracy to this image, text or measurements is guaranteed
Made with Metropix ©2024



MONEY LAUNDERING REGULATIONS 2017 intending purchasers will be asked to produce identification and proof of financial status when an offer is received. We would ask for your co-operation in order that there will be no delay in agreeing the sale.

THE CONSUMER PROTECTION REGULATIONS 2008 The Agent has not tested any apparatus, equipment, fixtures and fittings or services and so cannot verify that they are in working order or fit for the purpose. A Buyer is advised to obtain verification from their Solicitor or Surveyor. References to the Tenure of a Property are based on information supplied by the Seller. The Agent has not had sight of the title documents. A Buyer is advised to obtain verification from their Solicitor. You are advised to check the availability of this property before travelling any distance to view. We have taken every precaution to ensure that these details are accurate and not misleading. If there is any point which is of particular importance to you, please contact us and we will provide any information you require. This is advisable, particularly if you intend to travel some distance to view the property. The mention of any appliances and services within these details does not imply that they are in full and efficient working order. These particulars are in draft form awaiting Vendors confirmation of their accuracy. These details must therefore be taken as a guide only and approved details should be requested from the agents

33 Marlowes Hemel Hempstead Herts HP1 1LA
01442 260025 | hemel@maea.co.uk