



Connells

Dunchurch Dale
Walnut Tree Milton Keynes



Property Description

Connells are delighted to offer this beautifully presented four bedroom detached house sitting in the popular area of Walnut Tree. Accommodation briefly consists of kitchen, dining room, conservatory, lounge, master bedroom with en-suite, three further bedrooms, and family bathroom.

This property offers a generous and private plot with both front and rear gardens with magnificent views over open countryside, garage and parking.

Front

Driveway leading to double garage with parking for two vehicles. Steps leading to front entrance door.

Entrance Hall

Double glazed front door. Understairs storage space. Tiled flooring. Wall mounted radiator. Storage cupboard. Dogleg stairs with glass and wooden banisters leading to first floor accommodation. Doors to Kitchen, dining room and lounge.

Cloakroom

Double glazed window to front aspect. Part tiled. Low level WC and wash hand basin.

Lounge

14' x 16' 4" (4.27m x 4.98m)

Double double glazed doors to rear garden. Double glazed window to rear aspect. Wall mounted radiator. Double glazed window to front aspect. Feature fire. Double wooden doors to dining room.

Kitchen

16' 10" x 8' 10" (5.13m x 2.69m)

Fully fitted kitchen with base and wall units. Integrated double oven. Tiled splashbacks. One and a half stainless steel sink with mixer taps over. Electric hob with cooker hood over. Double glazed window to side. Double glazed window to rear. Food preparation stainless steel round sink with mixer tap. Space for fridge/freezer, dishwasher, and washing machine. Double glazed door to side aspect.

Dining Room

11' 3" x 12' (3.43m x 3.66m)

Wall mounted radiator. Opening to conservatory.

Conservatory

12' 5" x 9' 3" (3.78m x 2.82m)

Three velux windows. Double double glazed doors to rear garden. Wall mounted radiator. Double glazed windows surrounding room.

First Floor

Landing

Dog leg glass and wooden stairs from ground floor. Wall mounted radiator. Doors to all bedrooms and family bathroom. Airing cupboard.

Master Bedroom

14' 8" x 11' 6" (4.47m x 3.51m)

Double double glazed doors to Juliet balcony with views over open countryside. Two wall mounted radiators. Double glazed window to front aspect. Double fitted mirrored wardrobes. Spotlights in ceiling.

En-Suite

Corner shower unit. Vanity sink unit. Low level WC. Heated towel rail. Double glazed window to rear aspect.

Bedroom Two

11' 2" x 12' 1" (3.40m x 3.68m)

Double glazed window to rear aspect. Double fitted mirrored wardrobes. Double fitted wardrobes. Wall mounted radiator.

Bedroom Three

9' 10" x 10' 8" (3.00m x 3.25m)

Double glazed window to front aspect. Wall mounted radiator.

Bedroom Four

6' 8" x 8' 8" (2.03m x 2.64m)

Wall mounted radiator. Double glazed window to front aspect.

Family Bathroom

Vanity sink with mixer tap. Tiled flooring. Double glazed window to rear. Corner shower unit. Low level WC.

Outside

Rear Garden

Mainly laid to lawn. Open fencing to back of garden enabling magnificent views over open countryside. Mainly laid to lawn. Garden pond. Greenhouse. Wooden fencing surround.

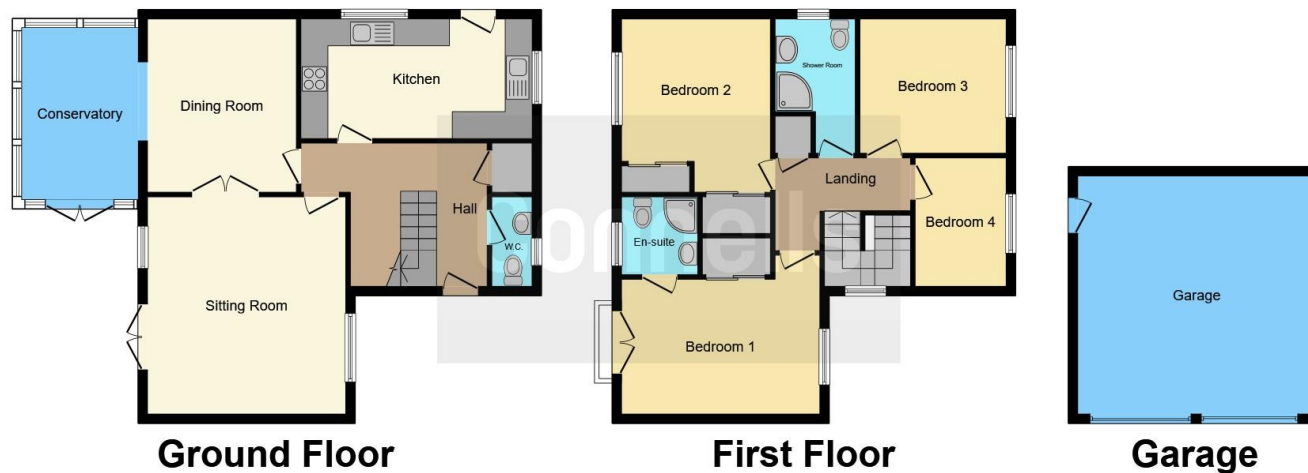
Garage

Double garage with electric roller doors. Power and light. Courtesy door.









This floorplan is for illustrative purposes only and is not drawn to scale. Measurements, floor-areas, openings and orientations are approximate. They should not be relied upon for any purpose and do not form any part of an agreement. No liability is taken for any error or mis-statement. All parties must rely on their own inspections.

To view this property please contact Connells on

T 01908 691606
E walnuttree@connells.co.uk

26A Fyfield Barrow The Walnut Tree Local Centre Walnut
 Tree

EPC Rating: C

M11 7AN KFYNFS MK7 7AN
view this property online connells.co.uk/Property/WNT306644

Tenure: Freehold



1. MONEY LAUNDERING REGULATIONS Intending purchasers will be asked to produce identification documentation at a later stage and we would ask for your co-operation in order that there will be no delay in agreeing the sale. 2. These particulars do not constitute part or all of an offer or contract. 3. The measurements indicated are supplied for guidance only and as such must be considered incorrect. Potential buyers are advised to recheck measurements before committing to any expense. 4. We have not tested any apparatus, equipment, fixtures, fittings or services and it is in the buyers interest to check the working condition of any appliances.

Connells Residential is registered in England and Wales under company number 1489613, Registered Office is Cumbria House, 16-20 Hockliffe Street, Leighton Buzzard, Bedfordshire, LU7 1GN. VAT Registration Number is 500 2481 05.

See all our properties at www.connells.co.uk | www.rightmove.co.uk | www.zoopla.co.uk

Property Ref: WNT306644 - 0003