





£475,000

Located in a small cul-de-sac in Aston Clinton this 4 bedroom, linked-detached home is welcomed to the market offering potential to modernise. The property comprises of separate lounge, kitchen and dining room, conservatory and downstairs cloak room. Other benefits include rear garden, garage and parking with no onward chain.

Property Description

ENTRANCE

Door to:

ENTRANCE HALL

Stairs to first floor, radiator, understairs storage cupboard, doors to lounge, kitchen and cloakroom.

CLOAKROOM

Double glazed window to side aspect. Low level w.c., wash hand basin.

LOUNGE

Double glazed French window to side aspect, double glazed window to rear. Feature fireplace with brick surround, two radiators, double doors to dining room, double doors to conservatory.

DINING ROOM

Double glazed window to rear aspect. Radiator.

CONSERVATORY

Double glazed windows, double glazed double doors to rear. Radiator.

KITCHEN

Range of wall mounted and floor standing units with work surface over, single drainer stainless steel sink with mixer tap, space for cooker with extractor fan over, plumbing for dishwasher, plumbing for washing machine, space for under counter fridge, wall mounted gas boiler.

LANDING

Double glazed window to front aspect. Radiator, airing cupboard housing lagged water cylinder.

BEDROOM ONE

Double glazed window to rear aspect. Built in wardrobe, radiator.

BEDROOM TWO

Double glazed window to rear aspect. Access to loft space.

BEDROOM THREE

Double glazed window to rear aspect. Radiator, built in wardrobe.

BEDROOM FOUR

Double glazed window to side aspect. Radiator.

BATHROOM

Frosted double glazed window to side aspect. Panelled bath with shower attachment over, low level w.c., pedestal wash hand basin, radiator.

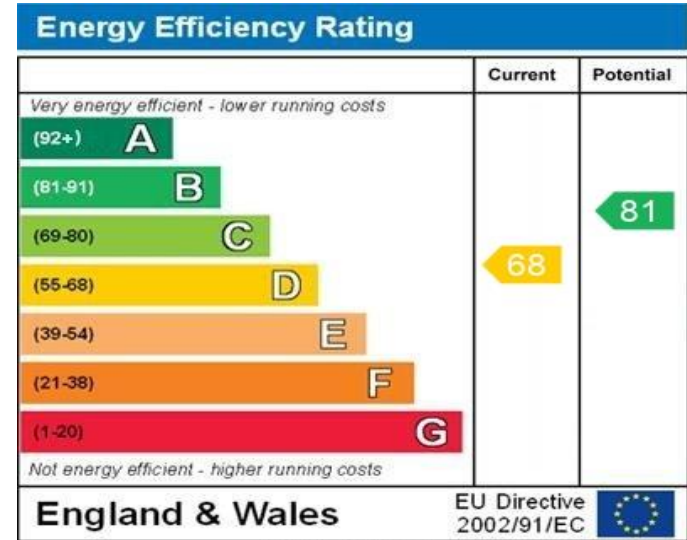
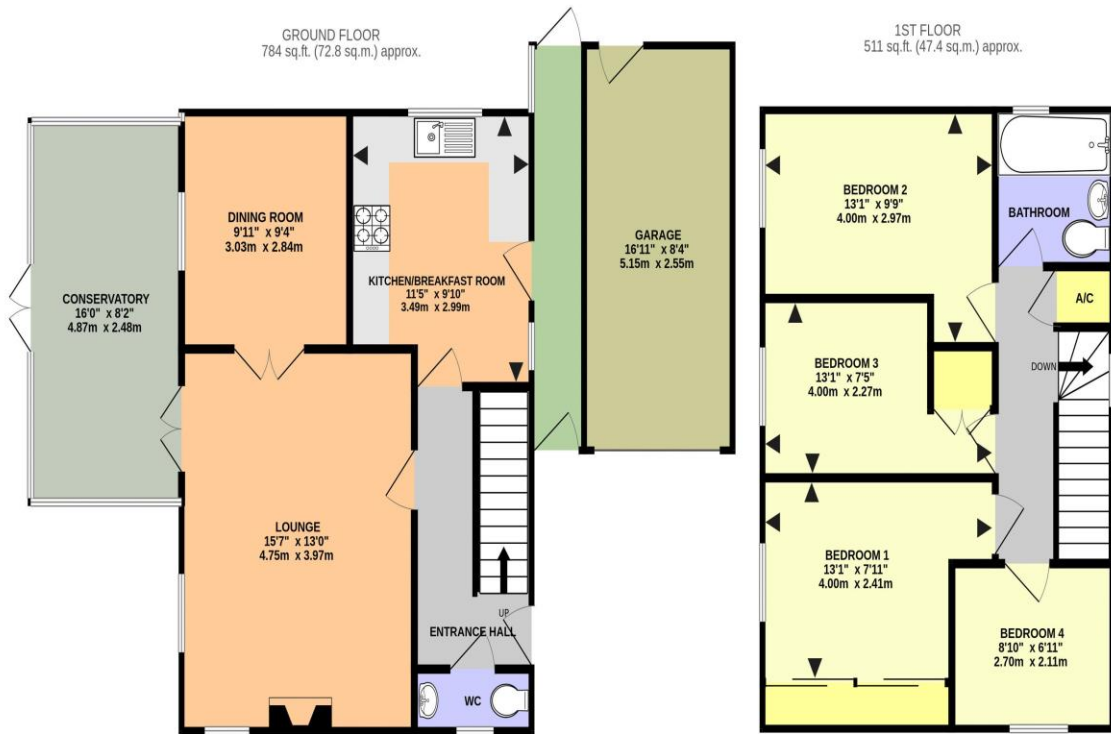
OUTSIDE

GARAGE

Electric roller door, power and light, personal door to garden.

REAR GARDEN

Mainly laid to lawn with patio area, flower and shrub beds, door to garage, gated side access.



COSY CORNER, ASTON CLINTON HP22 5EQ (PRODUCED FOR MICHAEL ANTHONY)

TOTAL FLOOR AREA : 1294 sq.ft. (120.2 sq.m.) approx.

No accuracy to this image, text or measurements is guaranteed
 Made with Metropix ©2024

MONEY LAUNDERING REGULATIONS 2017 intending purchasers will be asked to produce identification and proof of financial status when an offer is received. We would ask for your co-operation in order that there will be no delay in agreeing the sale.

THE CONSUMER PROTECTION REGULATIONS 2008 The Agent has not tested any apparatus, equipment, fixtures and fittings or services and so cannot verify that they are in working order or fit for the purpose. A Buyer is advised to obtain verification from their Solicitor or Surveyor. References to the Tenure of a Property are based on information supplied by the Seller. The Agent has not had sight of the title documents. A Buyer is advised to obtain verification from their Solicitor. You are advised to check the availability of this property before travelling any distance to view. We have taken every precaution to ensure that these details are accurate and not misleading. If there is any point which is of particular importance to you, please contact us and we will provide any information you require. This is advisable, particularly if you intend to travel some distance to view the property. The mention of any appliances and services within these details does not imply that they are in full and efficient working order. These particulars are in draft form awaiting Vendors confirmation of their accuracy. These details must therefore be taken as a guide only and approved details should be requested from the agents

79 High Street Tring Herts HP23 4AB
 01442 891177 | tring@maea.co.uk