





£600,000

Situated in the popular village of Aston Clinton, this deceptively spacious three bedroom detached bungalow is welcomed to the market offering lounge with log burner, kitchen/breakfast room, en-suite shower room to main bedroom, family bathroom and a loft room. Other benefits also include both front and rear gardens, driveway parking and garage.

Property Description

ENTRANCE

Front door to:

ENTRANCE HALL

Radiator, stairs rising to first floor, under stairs storage cupboard.

LOUNGE

Double glazed bay window to front aspect. Feature fireplace with multi-fuel burner, two radiators.

KITCHEN/BREAKFAST ROOM

Double glazed window to front aspect, double glazed frosted door to side. Fitted with a range of wall-mounted and base units with work surface over, one and a half bowl stainless steel sink unit with mixer tap over, space for: cooker with extractor fan over, tumble dryer and fridge freezer; plumbing for dishwasher and washing machine, concealed wall-mounted gas boiler, radiator.

INNER HALL

Radiator, airing cupboard housing lagged water cylinder, doors to lounge/dining room, kitchen/breakfast room, bedrooms and bathroom. Hatch to part boarded loft with power and lighting.

BEDROOM ONE

Double glazed window to rear aspect. Radiator, opening to:

EN-SUITE

Tiled shower cubicle, low level WC, pedestal wash hand basin, heated towel rail.

BEDROOM TWO

Double glazed window to rear aspect. Radiator.

BEDROOM THREE

Double glazed window to rear aspect. Radiator, built-in wardrobes.

BATHROOM

Double glazed frosted window to side aspect. Low level WC, pedestal wash hand basin, panelled bath with shower over, heated towel rail.

LOFT ROOM/STUDY

Double glazed Velux window. Radiator.

OUTSIDE

GARAGE/PARKING

Garage with power, lighting and external tap, electric roller door. Shingled driveway providing parking for several vehicles.

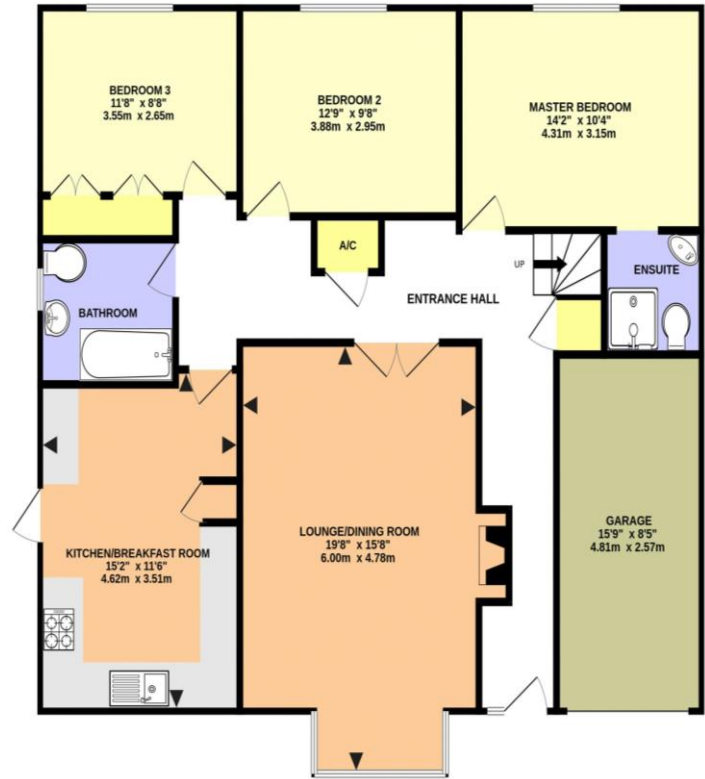
FRONT GARDEN

Mainly laid to lawn with flower and shrub beds.

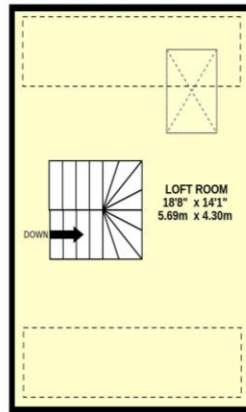
REAR GARDEN

Mainly laid to lawn with patio area, gated side access, timber storage shed and outside light, enclosed by timber fence panelling.

1276 sq.ft. (118.6 sq.m.) approx.



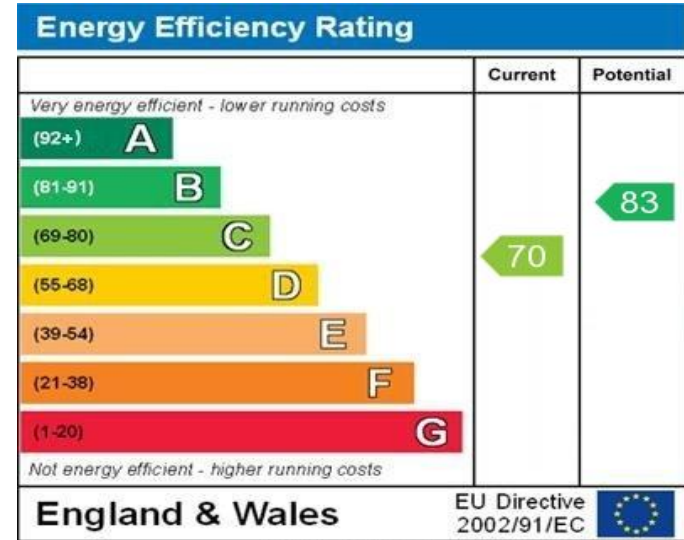
LOFT ROOM
264 sq.ft. (24.5 sq.m.) approx.



GREEN END STREET, ASTON CLINTON HP22 5EU (PRODUCED FOR MICHAEL ANTHONY)

TOTAL FLOOR AREA: 1540 sq.ft. (143.1 sq.m.) approx.

No accuracy to this image, text or measurements is guaranteed
Made with Metropix ©2023



WWW.EPC4U.COM

MONEY LAUNDERING REGULATIONS 2017 intending purchasers will be asked to produce identification and proof of financial status when an offer is received. We would ask for your co-operation in order that there will be no delay in agreeing the sale.

THE CONSUMER PROTECTION REGULATIONS 2008 The Agent has not tested any apparatus, equipment, fixtures and fittings or services and so cannot verify that they are in working order or fit for the purpose. A Buyer is advised to obtain verification from their Solicitor or Surveyor. References to the Tenure of a Property are based on information supplied by the Seller. The Agent has not had sight of the title documents. A Buyer is advised to obtain verification from their Solicitor. You are advised to check the availability of this property before travelling any distance to view. We have taken every precaution to ensure that these details are accurate and not misleading. If there is any point which is of particular importance to you, please contact us and we will provide any information you require. This is advisable, particularly if you intend to travel some distance to view the property. The mention of any appliances and services within these details does not imply that they are in full and efficient working order. These particulars are in draft form awaiting Vendors confirmation of their accuracy. These details must therefore be taken as a guide only and approved details should be requested from the agents

79 High Street Tring Herts HP23 4AB
01442 891177 | tring@maea.co.uk