





Guide Price
£375,000

Situated in the sought after village of Pitstone offering easy access to all local amenities and nearby train station this beautifully presented two bedroom end of terraced home is welcomed to the market offering lounge, kitchen/breakfast room, family bathroom and a garage which has been converted to a studio and storage. Further benefits include an enclosed rear garden and driveway parking with electrical charging point.

Property Description

ENTRANCE

Door to:

ENTRANCE HALL

Stairs rising to first floor, radiator, door to lounge.

LOUNGE

Double glazed window to front aspect. Radiator, opening to kitchen.

KITCHEN/BREAKFAST ROOM

Double glazed window to rear aspect, double glazed door to rear. Fitted with a range of wall-mounted and floor standing units with work surface over, single drainer stainless steel sink unit with mixer tap over, integrated dishwasher, plumbing for washing machine, built-in oven and gas hob with extractor fan over, space for fridge freezer, radiator, concealed wall-mounted gas boiler, radiator.

LANDING

Airing cupboard, access to loft space.

BEDROOM ONE

Two double glazed windows to front aspect. Radiator.

BEDROOM TWO

Double glazed window to rear aspect. Radiator.

BATHROOM

Double glazed frosted window to rear aspect. Panelled bath with shower over, low level WC, pedestal wash hand basin, heated towel rail.

OUTSIDE

STUDIO/STORAGE

Part converted garage with power and lighting with home office space to rear and storage to front.

FRONT GARDEN

Path to front door, lawn area.

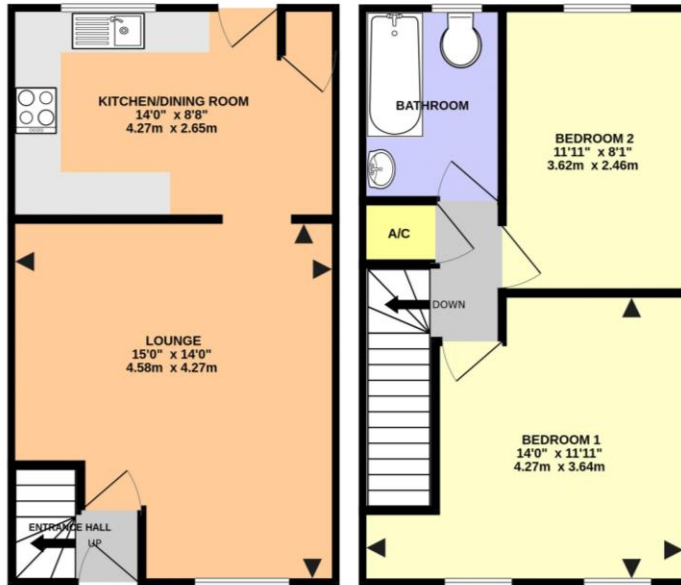
REAR GARDEN

Mainly laid to lawn with patio area, flower and shrub beds, door to garage, outside tap, outside light.

GROUND FLOOR
480 sq.ft. (44.6 sq.m.) approx.



1ST FLOOR
338 sq.ft. (31.4 sq.m.) approx.



OLD FARM, PITSTONE, LU7 9RD (PRODUCED FOR MICHAEL ANTHONY)

TOTAL FLOOR AREA : 818 sq.ft. (76.0 sq.m.) approx.
No accuracy to this image, text or measurements is guaranteed
Made with Metropix ©2024

MONEY LAUNDERING REGULATIONS 2017 intending purchasers will be asked to produce identification and proof of financial status when an offer is received. We would ask for your co-operation in order that there will be no delay in agreeing the sale.

THE CONSUMER PROTECTION REGULATIONS 2008 The Agent has not tested any apparatus, equipment, fixtures and fittings or services and so cannot verify that they are in working order or fit for the purpose. A Buyer is advised to obtain verification from their Solicitor or Surveyor. References to the Tenure of a Property are based on information supplied by the Seller. The Agent has not had sight of the title documents. A Buyer is advised to obtain verification from their Solicitor. You are advised to check the availability of this property before travelling any distance to view. We have taken every precaution to ensure that these details are accurate and not misleading. If there is any point which is of particular importance to you, please contact us and we will provide any information you require. This is advisable, particularly if you intend to travel some distance to view the property. The mention of any appliances and services within these details does not imply that they are in full and efficient working order. These particulars are in draft form awaiting Vendors confirmation of their accuracy. These details must therefore be taken as a guide only and approved details should be requested from the agents