





Guide Price
£325,000

Set in the heart of Tring's ever popular conservation area this two bedroom split level maisonette is ideally located offering easy access to both town centre amenities as well as countryside walks in the Chiltern Hills. This property benefits from a courtyard garden, deceptively spacious living accommodation and en suite to master bedroom.

Property Description

GROUND FLOOR

ENTRANCE HALL

Main door to side aspect, radiator, two storage cupboards, stairs leading to downstairs, doors to bedroom one, two and bathroom.

BEDROOM ONE

Window to front aspect, radiator, storage cupboard.

EN-SUITE

Comprising a bath with overhead shower, wash hand basin with storage cupboard below, low level w.c., radiator, window to hallway.

BEDROOM TWO

Window to rear aspect, radiator, built in storage cupboard.

BATHROOM

Frosted window to front aspect, comprising a shower cubicle, low level w.c., wash hand basin with storage cupboard below, radiator, work surface area, space for a washing machine.

BASEMENT

KITCHEN

Skylight window, a range of base level units, work surface areas over, stainless steel single drainer sink unit, integrated fridge, freezer, dishwasher, electric oven and hob, extractor fan, radiator, stairs leading to ground floor opening to lounge/diner.

LOUNGE/DINER

Radiator.

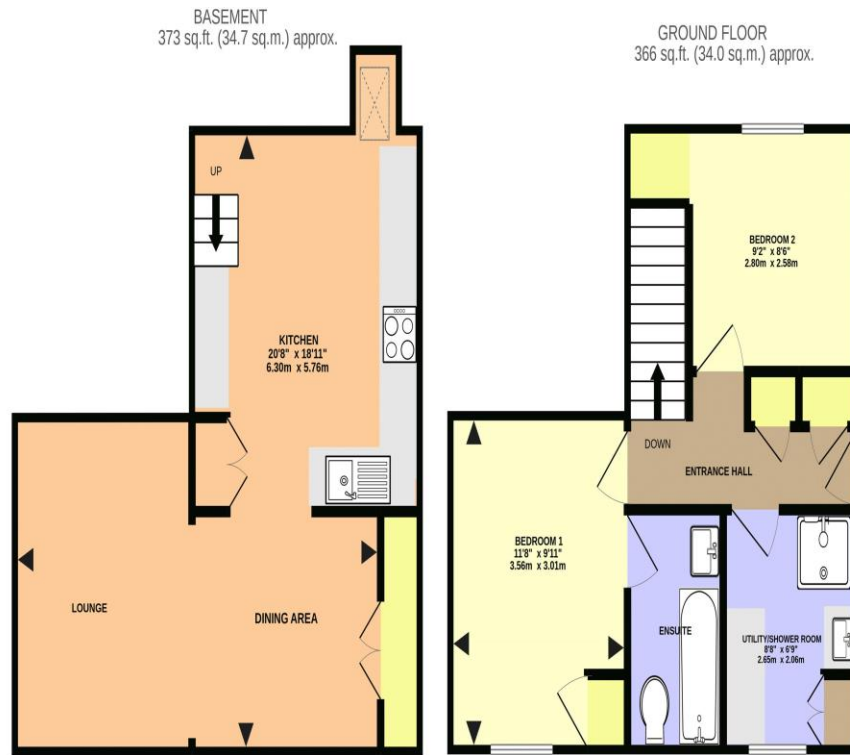
DINING ROOM

Radiator.

OUTSIDE

REAR GARDEN

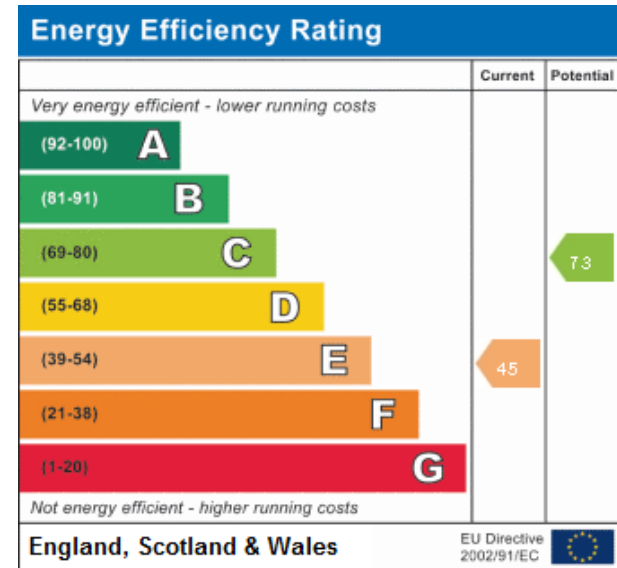
Enclosed by brick wall, patio area, outside light.



CHARLES STREET, TRING HP23 6SD (PRODUCED FOR MICHAEL ANTHONY)

TOTAL FLOOR AREA: 739 sq.ft. (68.7 sq.m.) approx.

No accuracy to this image, text or measurements is guaranteed
 Made with Metropix ©2022



MONEY LAUNDERING REGULATIONS 2017 intending purchasers will be asked to produce identification and proof of financial status when an offer is received. We would ask for your co-operation in order that there will be no delay in agreeing the sale.

THE CONSUMER PROTECTION REGULATIONS 2008 The Agent has not tested any apparatus, equipment, fixtures and fittings or services and so cannot verify that they are in working order or fit for the purpose. A Buyer is advised to obtain verification from their Solicitor or Surveyor. References to the Tenure of a Property are based on information supplied by the Seller. The Agent has not had sight of the title documents. A Buyer is advised to obtain verification from their Solicitor. You are advised to check the availability of this property before travelling any distance to view. We have taken every precaution to ensure that these details are accurate and not misleading. If there is any point which is of particular importance to you, please contact us and we will provide any information you require. This is advisable, particularly if you intend to travel some distance to view the property. The mention of any appliances and services within these details does not imply that they are in full and efficient working order. These particulars are in draft form awaiting Vendors confirmation of their accuracy. These details must therefore be taken as a guide only and approved details should be requested from the agents