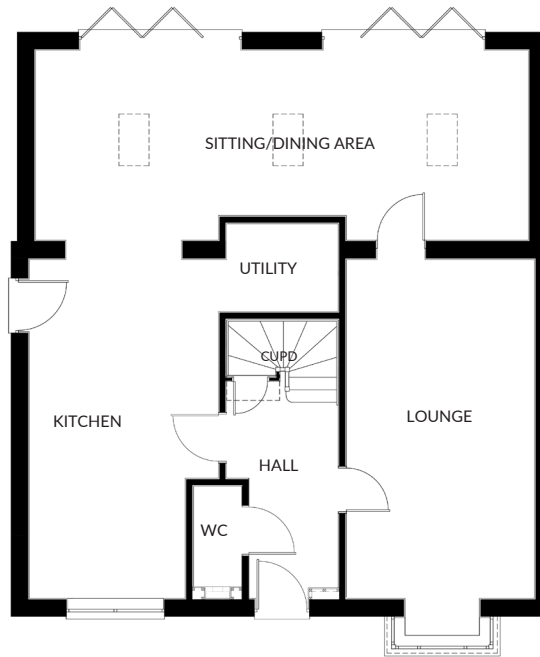


# THE AZURITE

## A 5 BEDROOM HOUSE



CYDENHOMES.CO.UK

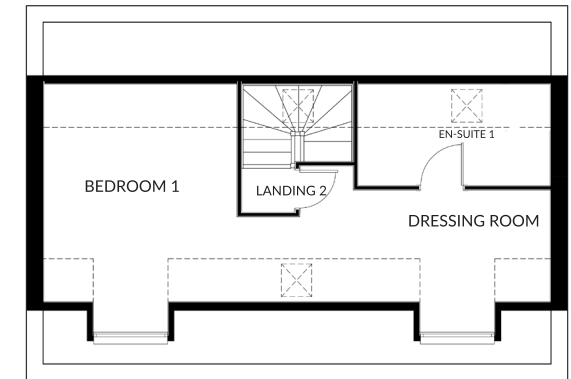
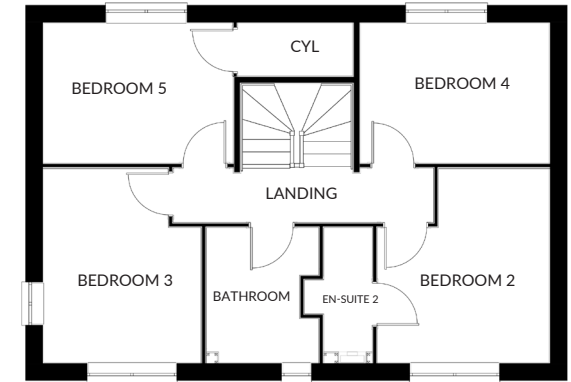


### GROUND FLOOR

LOUNGE	6198 X 3440	20'4" X 11'3"
SITTING/DINING	9000 X 3473	29'6" X 11'4"
KITCHEN	6198 X 3456(MAX)	20'4 X 11'4(MAX)
UTILITY	2040 X 1606	6'8" X 5'3"
WC	1835 X 888	6'0" X 2'11"

### FIRST FLOOR

BEDROOM 2	3543(MAX) X 3145(MAX)	11'7"(MAX) X 10'3"(MAX)
EN-SUITE 2	2276 X 889(MIN)	7'5" X 2'11"(MIN)
BEDROOM 3	3543(MAX) X 2878(MAX)	11'7"(MAX) X 9'5"(MAX)
BEDROOM 4	3443 X 2557	11'3" X 8'4"
BEDROOM 5	3459 X 2557	11'4" X 8'4"
BATHROOM	2469 X 2054(MAX)	8'1" X 6'8"(MAX)



### SECOND FLOOR

BEDROOM 1	3980(MIN) X 3520(MIN)	13'0"(MIN) X 11'6"(MIN)
DRESSING ROOM	3590 X 2039(MIN)	11'9" X 6'8"(MIN)
EN-SUITE 1	2686 X 1855	8'9" X 6'1"

**CONSUMER  
CODE FOR  
HOME BUILDERS**

[www.consumercode.co.uk](http://www.consumercode.co.uk)