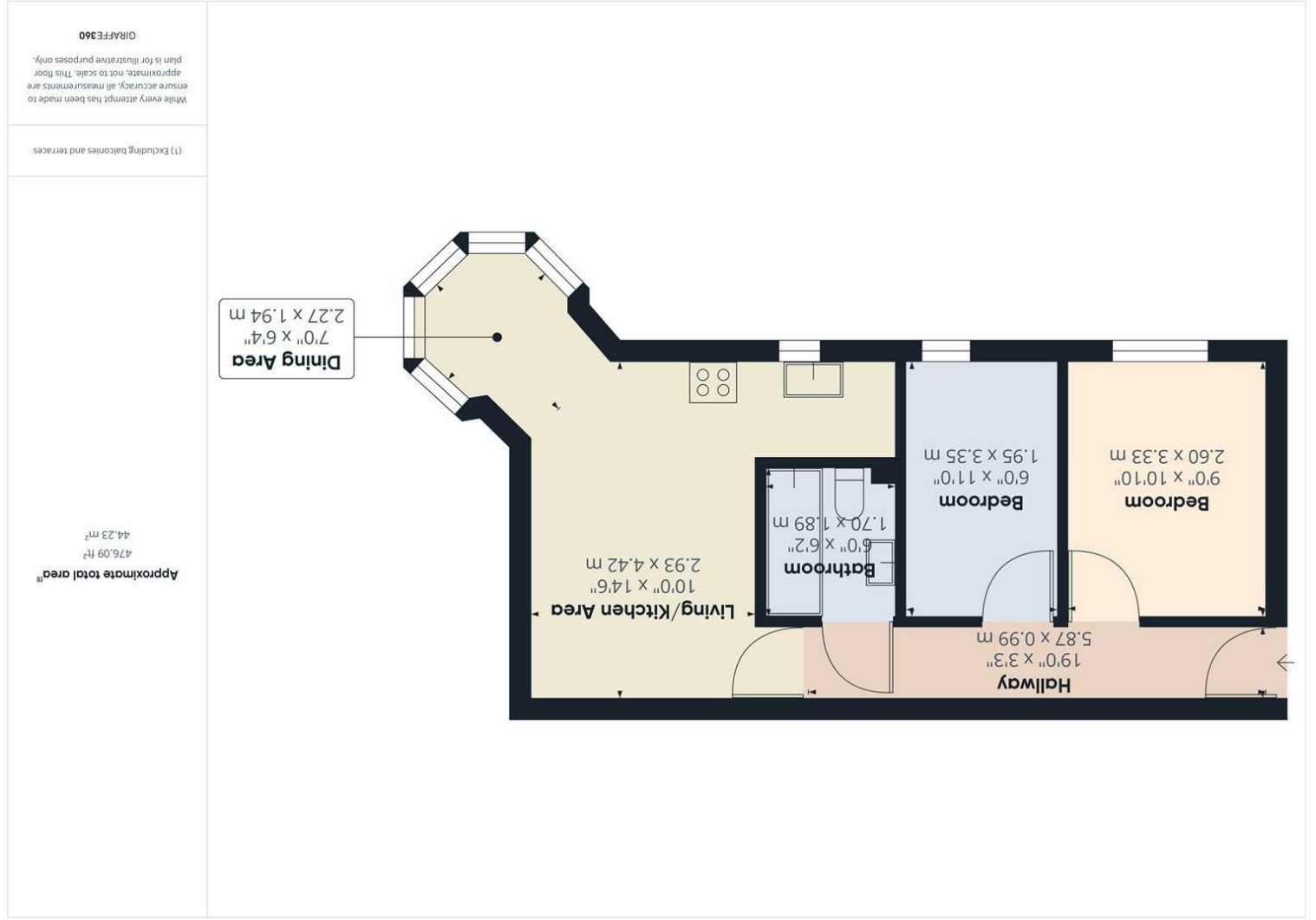


Consumer Protection from Unfair Trading Regulations 2008 We have not tested any apparatus, equipment, fittings or services and so cannot verify that they are in working order or fit for purpose. You are advised to obtain verification from your solicitor or surveyor. References to the tenure of a property are based on information supplied by the seller. We have not had sight of the title documents and a buyer is advised to obtain verification from their solicitor. Items shown in photographs are not included unless specifically mentioned within the sales particulars, but may be available by separate negotiation. We advise you to book an appointment to view before embarking on any journey to see a property, and check its availability.



- Hallway 19'3" x 3'2" (5.87 x 0.99)
- Living/Kitchen Area 9'7" x 14'6" (2.93 x 4.42)
- Dining Area 7'5" x 6'4" (2.27 x 1.94)
- Bedroom 8'6" x 10'11" (2.60 x 3.33)
- Bedroom 6'4" x 10'11" (1.95 x 3.35)
- Bathroom 5'6" x 6'2" (1.70 x 1.89)
- Lease - 125 Years from 25 April 2006
- Management Charge - £1802.88 per annum
- Ground Rent - £150 per annum



- Open plan living/kitchen area
- Turreted dining area
- Two bedrooms
- Modern bathroom
- Gas central heating
- Allocated parking
- No chain

PROPERTY TYPE Flat
BEDROOMS 2
RECEPTION ROOMS 1
BATHROOMS 1
EPC RATING C
COUNCIL TAX BAND B



Well presented first floor apartment, with open plan living and turreted dining area plus kitchen, two bedrooms and a modern bathroom. Gas central heating, double glazing, and an allocated parking space. Ideal first home or buy to let investment.



the location

Conveniently placed not far from the centre of Kingswood with its range of shops, bars and restaurants. Hanham high street is a short distance away, the Avon ring and cycle path are also easily accessible. Bristol 4.1 miles Bath 9.5 miles

Offered for sale with no onward chain.

just a thought...

If you hadn't considered Kingswood before, this could be the one! Well presented with parking, a turret, and a range of good local amenities nearby - all at this extremely competitive price point. Bristol 4.1 miles Bath 9.5 miles