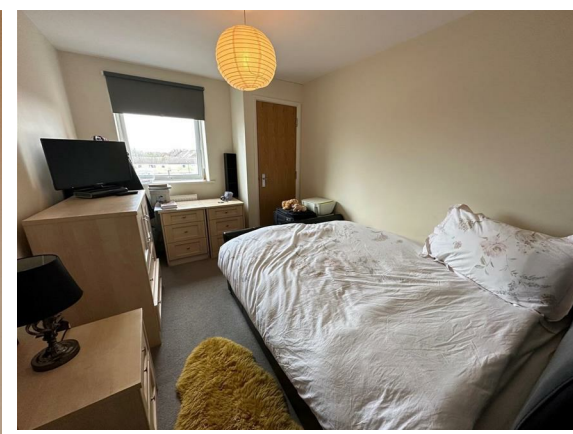


Consumer Protection from Unfair Trading Regulations 2008 We have not tested any apparatus, equipment, fittings or services and so cannot verify that they are in working order or fit for purpose. You are advised to obtain verification from your solicitor or surveyor. References to the tenure of a property are based on information supplied by the seller. We have not had sight of the title documents and a buyer is advised to obtain verification from their solicitor. Items shown in photographs are not included unless specifically mentioned within the sales particulars, but may be available by separate negotiation. We advise you to book an appointment to view before embarking on any journey to see a property, and check its availability.



Flat 15, Kingsway Court 89 Two Mile Hill Road, Bristol, BS15 1BL
£895 PCM

PROPERTY TYPE Flat
BEDROOMS 1
RECEPTION ROOMS null
BATHROOMS 1
EPC RATING B
COUNCIL TAX BAND A



Well presented, second floor apartment with lounge/diner, one double bedroom, modern kitchen with oven, hob, fridge/freezer and washing machine, modern bathroom, gas central heating and double glazing. Further benefits include communal gardens and lift. Available 24.07.2024. Council Tax Band A. Energy Rating TBC.



the location

what the owners will miss

just a thought...