



House - Terraced

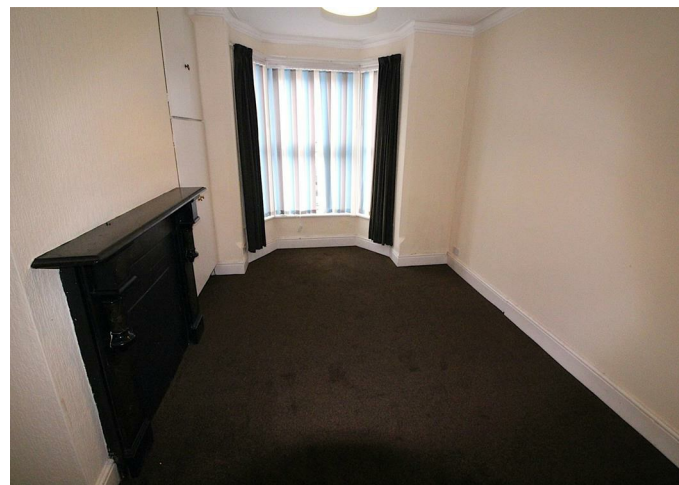
# 144 RAILWAY TERRACE, RUGBY, WARWICKSHIRE, CV21 3HN

PCM

## £1,050

### FEATURES

- VIDEO VIEWING AVAILABLE
- CLOSE TO TOWN & TRAIN STATION
- GOOD SIZE UTILITY ROOM
- STREET PARKING
- THREE GOOD SIZE BEDROOMS
- GAS CENTRAL HEATING
- ENCLOSED REAR GARDEN
- EPC GRADE D



**newman**  
property experts

# 3 Bedroom House - Terraced located in Warwickshire

**\*\*VIRTUAL VIEWING AVAILABLE\*\***.....THREE BEDROOM BAY FRONTED TERRACE.....Located close to the town centre and train station, this three bedroom property comprises: Lounge, separate diner, breakfast room, kitchen with cooker and large utility room. Upstairs comprises of three double bedrooms & modern bathroom. Garden to the rear. Street parking available. Unfurnished. Available 30th July 2024. EPC rating D.

Call us on


**01788 820028**

[let@newman.uk.com](mailto:let@newman.uk.com)

[www.newman.uk.com](http://www.newman.uk.com)

**Council Tax Band**

**B**

Energy Efficiency Rating		
	Current	Potential
<i>Very energy efficient - lower running costs</i>		
(92 plus) <b>A</b>		
(81-91) <b>B</b>		
(69-80) <b>C</b>		
(55-68) <b>D</b>		
(39-54) <b>E</b>		
(21-38) <b>F</b>		
(1-20) <b>G</b>		
<i>Not energy efficient - higher running costs</i>		
<b>England &amp; Wales</b>		EU Directive 2002/91/EC 

Agents Note: Whilst every care has been taken to prepare these particulars, they are for guidance purposes only. All measurements are approximate and are for general guidance purposes only and whilst every care has been taken to ensure their accuracy, they should not be relied upon and potential buyers are advised to recheck the measurements.

**newman**  
property experts