



House

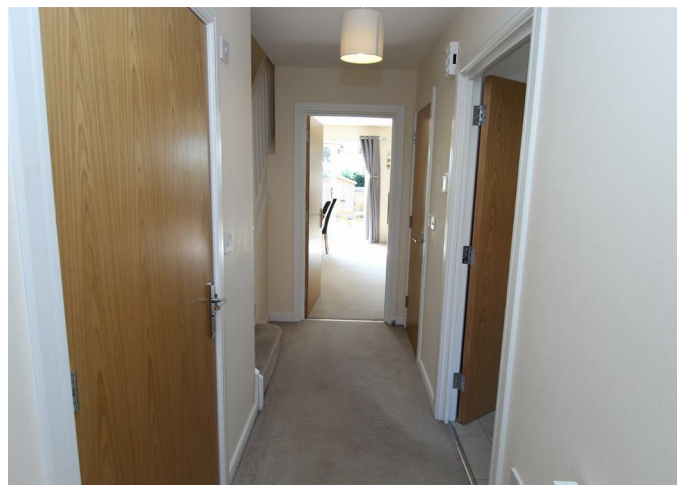
**24 MARLOW GREEN,  
BISHOPS  
ITCHINGTON,  
SOUTHAM, CV47  
2QF**

**PCM**

**£1,450**

#### FEATURES

- Semi Detached House
- Three Bedrooms
- Lounge/Dining Room
- Contemporary kitchen
- Master Bedroom Having Ensuite
- Low Maintenance Garden
- Driveway & Garage
- Village Location



**newman**  
property experts

# 3 Bedroom House located in Southam

\*\*\* EMAIL ENQUIRIES ONLY \*\*\* AVAILABLE FOR IMMEDIATE OCCUPATION \*\*\*

Nestled in the charming area of Marlow Green, Bishops Itchington, this delightful semi-detached house offers a perfect blend of comfort and modern living. With three well-proportioned bedrooms, including a master suite complete with an en-suite bathroom, this property is ideal for families or those seeking extra space.

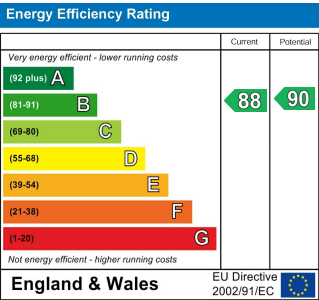
The heart of the home is a spacious lounge and dining room, providing an inviting atmosphere for relaxation and entertaining. The contemporary kitchen is designed with both style and functionality in mind, making it a pleasure to prepare meals and enjoy family gatherings.

Outside, the low maintenance garden offers a serene retreat, perfect for enjoying the outdoors without the burden of extensive upkeep. Additionally, the property features a convenient driveway, providing parking for one vehicle.

This house is not just a place to live; it is a home where memories can be made. With its appealing features and prime location, it presents an excellent opportunity for those looking to settle in

Call us on  
**01926 436111**  
[LEAMLET@NEWMAN.UK.COM](mailto:LEAMLET@NEWMAN.UK.COM)

Council Tax Band  
**D**



Agents Note: Whilst every care has been taken to prepare these particulars, they are for guidance purposes only. All measurements are approximate and are for general guidance purposes only and whilst every care has been taken to ensure their accuracy, they should not be relied upon and potential buyers are advised to recheck the measurements.