



Flat

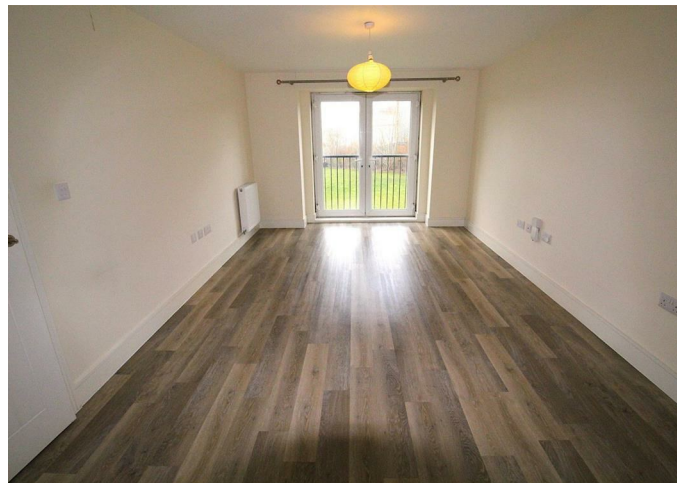
# 4 HIRST COURT, TAINTER CLOSE, RUGBY, WARWICKSHIRE, CV21 1GE

PCM

# £825 PCM

## FEATURES

- MODERN ONE BEDROOM APARTMENT
- VIRTUAL VIEWING AVAILABLE
- FIRST FLOOR
- INTEGRAL WHITE GOODS INCLUDED
- ONE ALLOCATED PARKING SPACE
- WALKING DISTANCE OF TRAIN STATION
- DAMAGE DEPOSIT £500
- COUNCIL TAX BAND B



**newman**  
property experts

# 1 Bedroom Flat located in Rugby

**\*\*MODERN ONE BEDROOM APARTMENT\*\*VIRTUAL VIEWING AVAILABLE\*\*.....ideally located for access to the train station and town centre. The property comprises of entrance hall, open plan living room/kitchen-diner with fitted appliances, fridge/freezer, washing machine, dishwasher. One double bedroom with fitted wardrobe & modern bathroom. Allocated parking for one car. Double glazing and central heating. EPC Grade B. Council Tax Band B. Available NOW.**

Call us on

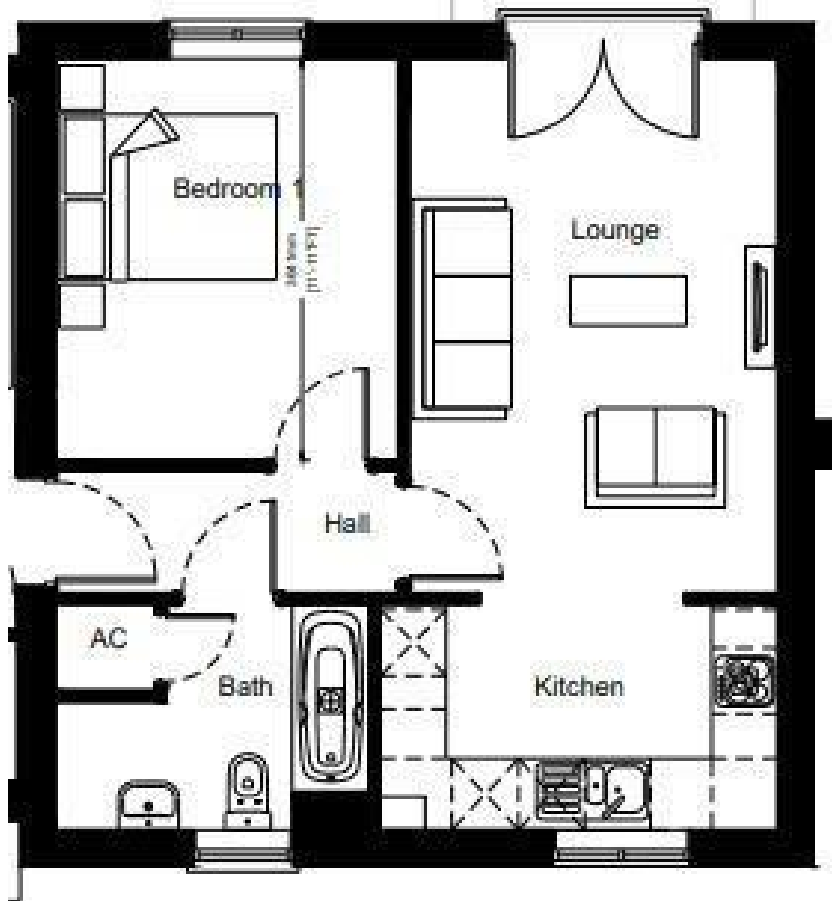
**01788 820028**

[let@newman.uk.com](mailto:let@newman.uk.com)

[www.newman.uk.com](http://www.newman.uk.com)

**Council Tax Band**

**B**



Energy Efficiency Rating		
	Current	Potential
Very energy efficient - lower running costs		
(92 plus) <b>A</b>		
(81-91) <b>B</b>	<b>83</b>	<b>83</b>
(69-80) <b>C</b>		
(55-68) <b>D</b>		
(39-54) <b>E</b>		
(21-38) <b>F</b>		
(1-20) <b>G</b>		
Not energy efficient - higher running costs		
<b>England &amp; Wales</b>	EU Directive 2002/91/EC	

Agents Note: Whilst every care has been taken to prepare these particulars, they are for guidance purposes only. All measurements are approximate and are for general guidance purposes only and whilst every care has been taken to ensure their accuracy, they should not be relied upon and potential buyers are advised to recheck the measurements.

**newman**  
property experts