

# Pollards Yard

*Urban Luxe*



## The Loxleigh

Generous four-bedroom, three-storey townhouses



# The Loxleigh

## Generous four-bedroom, three-storey townhouses

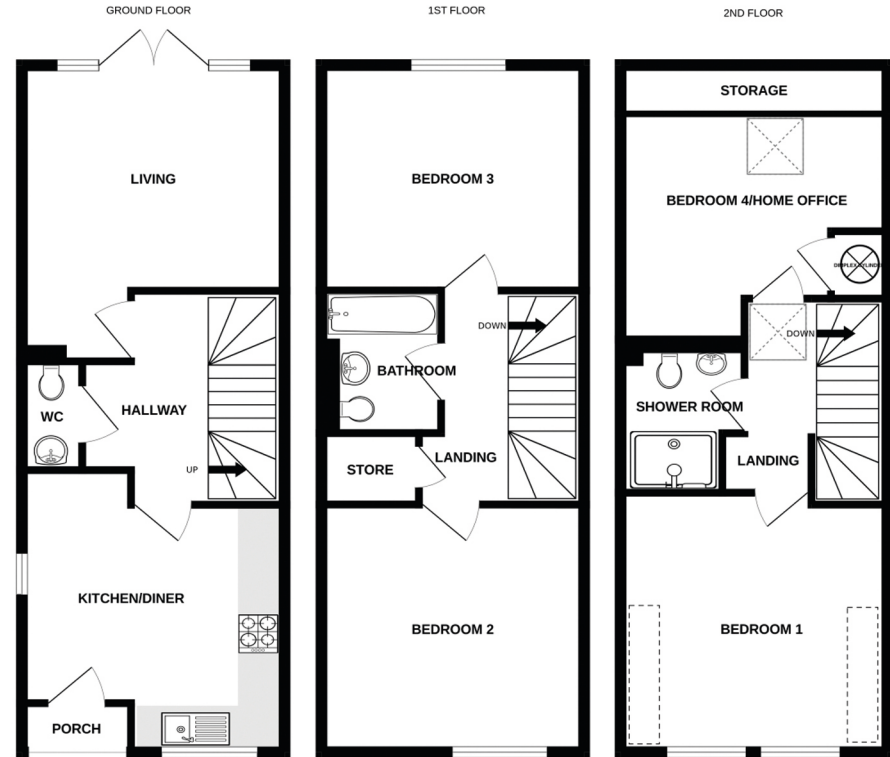
The Loxleigh three-storey home offers family living with generous proportions when compared to other developments.

All plots are in excess of 110m<sup>2</sup> internal floor area.

They have largely the same layout and depth but there are semi-detached, end-terraced and mid-terraced homes of varying widths to suit every taste and budget.

The ground floor comprises the living space with kitchen/diner to the front and lounge opening via French doors and side screen windows to the garden at the rear. The staircase leads to 2 bedrooms and bathroom on the first floor and then to a master ensuite bedroom with raised ceiling and the fourth bedroom on the second floor.

Externally, each property has a garden, allocated parking and dedicated EV charger.



By appointment only via Gibbins Richards

Telephone: 01278 444 488

Email: [pollardsyard@gibbinsrichards.co.uk](mailto:pollardsyard@gibbinsrichards.co.uk)

Web: <https://www.gibbinsrichards.co.uk/pollardsyard/>