





2



2



1

- Two Double Bedrooms
- End Terraced House
- Heta Log Burner
- Wood fired pizza oven
- Rarely Available
- Immaculate Throughout
- Sought After Location
- New range cooker
- Monsoon Shower
- **MUST BE VIEWED**





**** Video Tour on our YouTube Channel <https://youtu.be/CSF0VJLdp48> ****

Jan Forster Estates are delighted to welcome to the market this extended two bedroom end terrace cottage style home in the heart of Gosforth.

Set on the pedestrianised walkway of Laurel Walk sits Laurel Cottage a great example of modern living with stunning period features.

Briefly comprising; lounge with exposed brick feature fireplace flanked by 'Miners Lamp' lights as a nod to the property's history as a miners cottage. Dining Room also with exposed brick fireplace with new Heta log Burner and double doors leading to the rear yard. Beautiful kitchen with recently installed range cooker, Belfast sink and Velux window. Off the landing to the first floor there are two double bedrooms, bedroom one with the properties third feature fireplace as well as there being additional storage beneath the stairs. To the second floor there is a stunning three piece family bathroom with monsoon shower over the bath and eaves storage.

Externally there is a town garden to the front a south facing rear yard with operational wood fired pizza oven and on street permit parking.

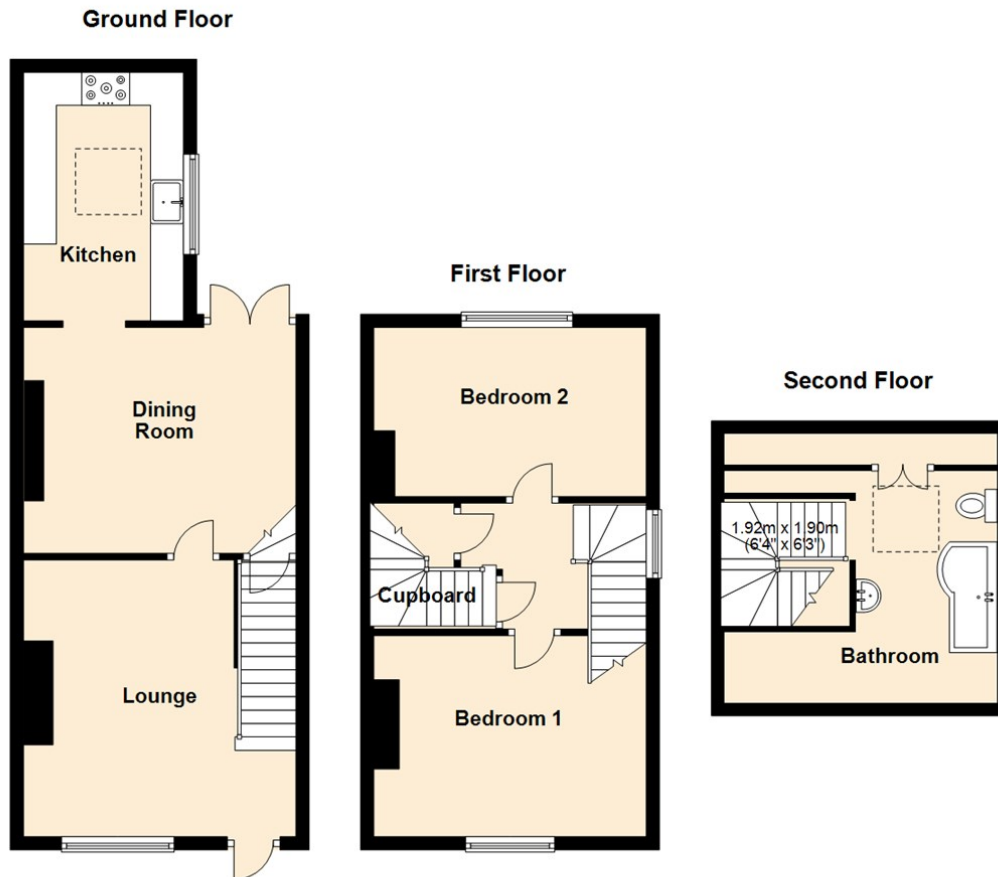
The mirror seen in the lounge is the original mirror dating back to c.1900 and has been passed from owner to owner, a tradition the seller is very keen to uphold.

The property **MUST** be viewed to appreciate the accommodation on offer, to organise a viewing please call our office on 0191 236 2070.

Covid-19 Viewing Guidelines

For the safety of our clients, yourselves and our staff we are currently only allowing viewings to go ahead if viewers wear appropriate PPE (masks and gloves). Social distancing rules must also be adhered to at all times. Where possible we will encourage vendors to leave the property while the viewing is going ahead. We also will only allow 2 people to view a property at any one time. We may share contact numbers where requested by NHS to prevent the spread of Covid-19.





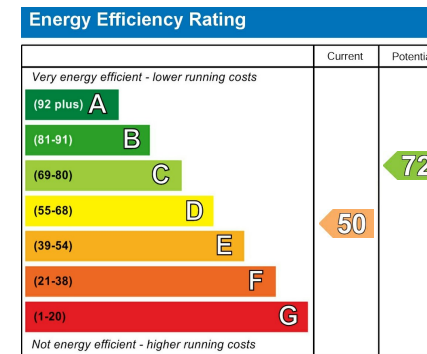
Lounge 13'8" x 13'9" (4.17 x 4.20)

Dining Room 14'6" x 11'3" (4.44 x 3.43)

Kitchen 7'5" x 12'2" (2.27 x 3.73)

Bedroom One 14'2" x 10'0" (4.32 x 3.05)

Bedroom Two 8'2" x 14'6" (2.50 x 4.44)



The difference between house and home

You may download, store and use the material for your own personal use and research. You may not republish, retransmit, redistribute or otherwise make the material available to any party or make the same available on any website, online service or bulletin board of your own or of any other party or make the same available in hard copy or in any other media without the website owner's express prior written consent. The website owner's copyright must remain on all reproductions of material taken from this website.

Gosforth 0191 236 2070
 Newcastle 0191 284 4050
 Forest Hall 0191 605 3134
 High Heaton 0191 270 1122
 Low Fell 0191 487 0800
 Tynemouth 0191 257 2000
 Whitley Bay 0191 251 3000
 Property Management Centre 0191 236 2680