





- No Onward Chain
- Two Double Bedrooms
- Third Floor Apartment
- Open Plan
- En-Suite
- Viewing Recommended





*** CITY LIVING WITH NO ONWARD CHAIN ***

This is a superbly presented third floor, two bedroom luxury apartment situated within minutes walk of Newcastle Quayside and a short distance from Newcastle City Centre.

The accommodation comprises in brief:- Secure communal entrance with lift to all floors, entrance hallway with door to open plan lounge/kitchen diner, two double bedrooms (the master with en-suite), bathroom and balcony with views of the River Tyne. Allocated parking space in secure car park.

This will appeal to both professionals with easy access to the city centre and investors for high end rental market. Please call 0191 236 2070.

Tenure

The agent understands the property to be leasehold. However, this should be confirmed with a licenced legal representative.

Covid-19 Viewing Guidelines

For the safety of our clients, yourselves and our staff we are currently only allowing viewings to go ahead if viewers wear appropriate PPE (masks and gloves). Social distancing rules must also be adhered to at all times. Where possible we will encourage vendors to leave the property while the viewing is going ahead. We also will only allow 2 people to view a property at any one time. We may share contact numbers where requested by NHS to prevent the spread of Covid-19.

Council Tax band *D*

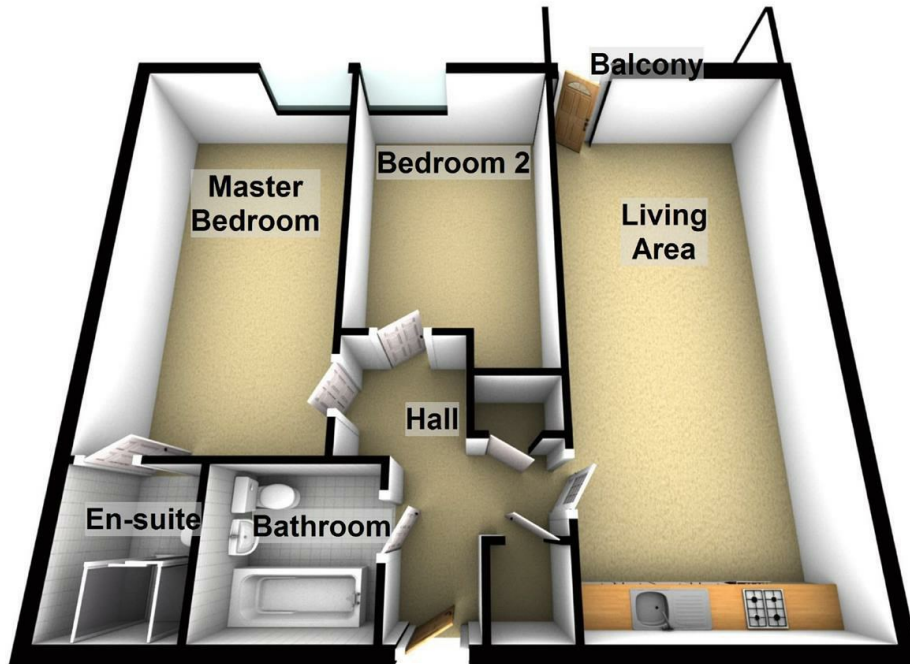


Lounge/Kitchen Diner 24'6" x 11'3" (7.46 x 3.42)

Master Bedroom 19'8" x 9'8" (6.00 x 2.94)

Bedroom Two 17'9" x 9'6" (5.42 x 2.90)

Third Floor



Energy Efficiency Rating		
	Current	Potential
<i>Very energy efficient - lower running costs</i>		
(92 plus) A		
(81-91) B		
(69-80) C		
(55-68) D		
(39-54) E		
(21-38) F		
(1-20) G		
<i>Not energy efficient - higher running costs</i>		
England & Wales	EU Directive 2002/91/EC	

The difference between house and home

You may download, store and use the material for your own personal use and research. You may not republish, retransmit, redistribute or otherwise make the material available to any party or make the same available on any website, online service or bulletin board of your own or of any other party or make the same available in hard copy or in any other media without the website owner's express prior written consent. The website owner's copyright must remain on all reproductions of material taken from this website.

Gosforth 0191 236 2070
Newcastle 0191 284 4050
High Heaton 0191 270 1122
Tynemouth 0191 257 2000
Low Fell 0191 487 0800
Property Management Centre 0191 236 2680



www.janforsterestates.com

