







3



2



1

- No Onward Chain
- Three Bedrooms
- Ideal First Time Buy
- Council Tax Band \*A\*
- Call For More Information
- Popular Location
- Front and Rear Gardens
- Freehold
- Viewing Recommended



 **Jan Forster**

**MORE IMAGES  
COMING SOON!**

Viewings being booked... register your interest today



Call **0191 236 2070** for more information

Welcome to the market this charming, three-bedroom semi-detached home positioned on Alnwick Terrace, in Wideopen. Offered for sale with the benefit of no onward chain. The property will appeal to a variety of buyers including first time and downsizers.

The area benefits from a real sense of community and a wealth of local amenities including schools, shops, post office, and leisure facilities with further amenities offered within Gosforth and Newcastle city centre via regular public transport links.

Internally the property briefly comprises to the ground floor; entrance hallway, lounge dining room with French doors leading to the rear garden, kitchen with a range of wall and floor units and a handy utility area. To the first floor there are three good-sized bedrooms and there a family bathroom WC. Additional benefits include gas central heating and double glazing.

Externally there are generous gardens to the front and rear of the property providing a perfect space to relax or entertain in the warmer months.

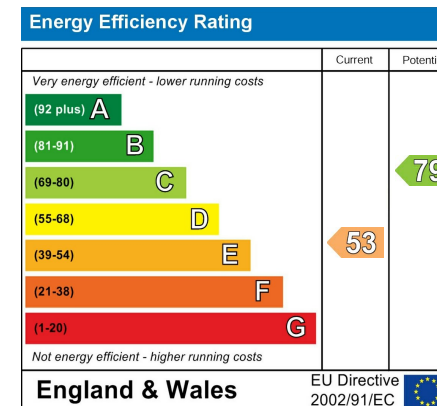
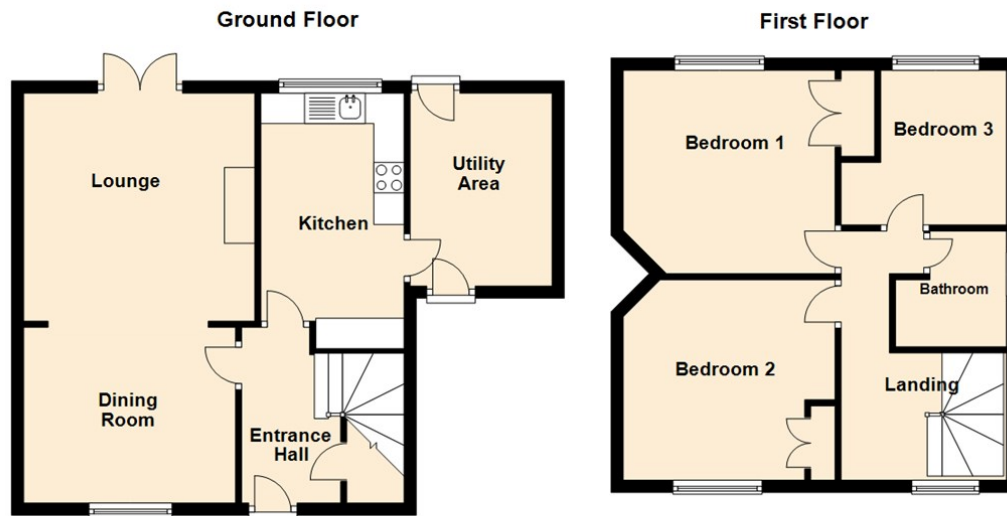
Early viewings come highly recommended. For more information, please call our Gosforth branch on 0191 236 2070.

#### Tenure

The agent understands the property to be freehold. However, this should be confirmed with a licenced legal representative.

Council Tax band \*A\*.





## The difference between house and home

You may download, store and use the material for your own personal use and research. You may not republish, retransmit, redistribute or otherwise make the material available to any party or make the same available on any website, online service or bulletin board of your own or of any other party or make the same available in hard copy or in any other media without the website owner's express prior written consent. The website owner's copyright must remain on all reproductions of material taken from this website.



[www.janforsterestates.com](http://www.janforsterestates.com)

Gosforth  
High Heaton  
Tynemouth  
Property Management Centre

0191 236 2070  
0191 270 1122  
0191 257 2000  
0191 236 2680

