





2



1



1

- Available End of July
- Part Furnished
- Off Street Parking
- Sought After Location
- Semi Detached Home
- Popular Location
- Two Double Bedrooms
- Private Rear Garden
- Kitchen Diner





AVAILABLE END OF JULY | OFF-STREET PARKING | PART FURNISHED

This semi detached house is located on Rowan Way at City Edge. The property is just a short drive from Newcastle city centre and provides great access to the Central Motorway, A1, and an abundance of public transport and local amenities. The high-quality homes are perfect for those looking to get onto the property ladder or looking for more space for their family to grow.

The property briefly comprises:- entrance hall with ground floor WC, spacious bright and airy lounge, modern kitchen diner with fitted wall and floor units and French doors leading out to the rear garden.

Off the landing, to the first floor, there are two generous double bedrooms; bedroom one with a walk-in cupboard, and there is a three piece family bathroom WC with a shower over the bath.

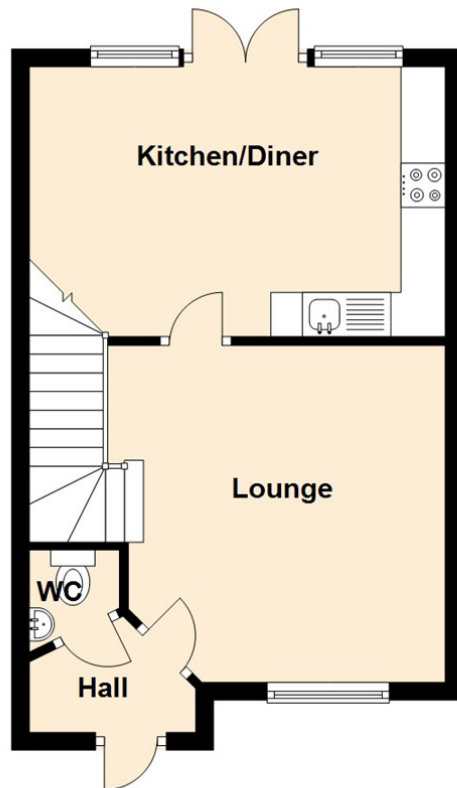
Externally there is a driveway to the front and side access to the rear garden. The rear garden has a patio area and lawn; ideal for entertaining during those warm summer nights.

This stunning home must be viewed. To book your viewing please call our team on 0191 236 2070.

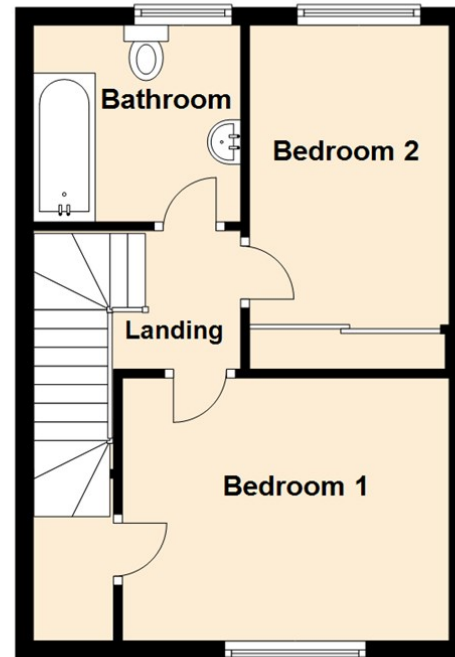
Council Tax band *B*.



Ground Floor



First Floor



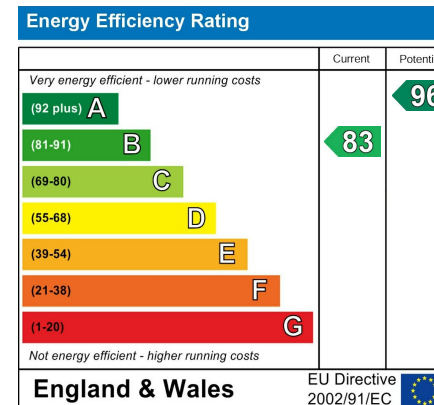
The difference between house and home

You may download, store and use the material for your own personal use and research. You may not republish, retransmit, redistribute or otherwise make the material available to any party or make the same available on any website, online service or bulletin board of your own or of any other party or make the same available in hard copy or in any other media without the website owner's express prior written consent. The website owner's copyright must remain on all reproductions of material taken from this website.

Should you decide to rent a property, a completed Rental Application Form is required for each adult proposing to rent the property, along with 2 forms of identification, including verification of your Right To Rent in the United Kingdom and a **Holding Deposit Fee equivalent of one week's rent rounded down to the nearest £5.00**. This Holding Deposit will be off-set against the first month's rental payment received.

The Holding Deposit is non-refundable should you fail the Right To Rent checks, you provide misleading information, you withdraw from the property or you fail to take reasonable steps to enter into a tenancy within the agreed timescale. The Holding Deposit does not constitute the offer of acceptance of a tenancy until such time as successful referencing is completed and the Tenancy Agreement is signed and executed by both parties. We will liaise with you to agree on a start date for the tenancy.

Schedule 2 of the Tenant Fees Act 2019 – Treatment of the Holding Deposit – governs how we deal with the Holding Deposit. This Schedule applies where a Holding Deposit is paid to either a Landlord or Letting Agent in respect of a proposed tenancy of housing in England. In this Schedule, 'the deadline for agreement' means the fifteenth day of the period beginning with the day on which the Landlord or Letting Agent receives the Holding Deposit. Unless both parties agree otherwise, this Holding Deposit must be returned to you if it is decided by the Landlord or Letting Agent not to proceed with the tenancy after a Holding Deposit has been paid. The deposit must be returned to you no later than 7 days after a decision is made not to proceed.



Gosforth

0191 236 2070

High Heaton

0191 270 1122

Tynemouth

0191 257 2000

Property Management Centre

0191 236 2680



www.janforsterestates.com

