





3



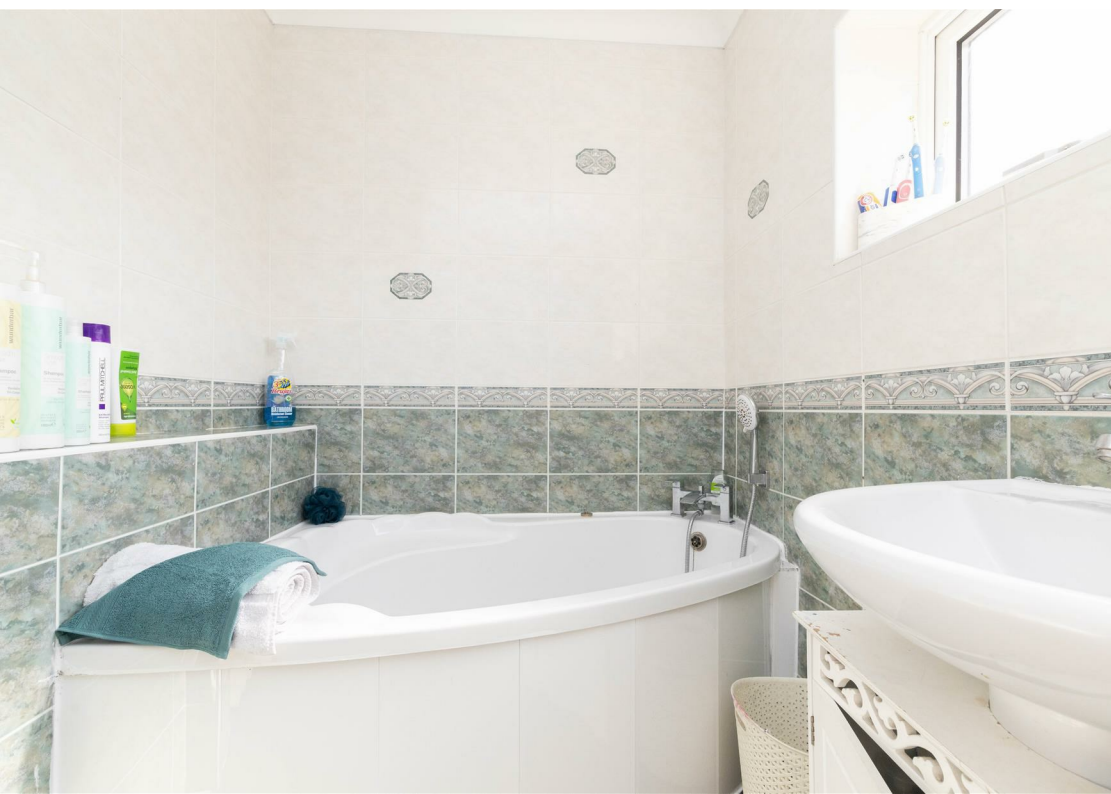
2



1

- Semi Detached
- Ideal Family Home
- Off Street Parking
- Freehold
- Viewing Recommended
- Three Bedrooms
- Beautifully Presented
- Gardens To Three Sides
- Council Tax Band *B*
- Call For More Information





**** Video Tour on our YouTube Channel | https://youtu.be/Uf3pBW7D_dI ****

This beautifully presented, three-bedroom, semi-detached family home, is positioned on Garthfield Crescent in Westerhope.

The location is close to a wealth of amenities, including a supermarket, independent shops, and popular restaurants. Green spaces and parks are close by, offering ideal spots for leisure and relaxation. Excellent transport links provide easy access to Newcastle City Centre and surrounding areas, with regular bus services and quick access to the A1 - perfect for commuters. Westerhope offers a well-connected, community-focused lifestyle. For the growing family there are also schools within easy reach.

The accommodation briefly comprises to the ground floor: welcoming entrance porch and WC, hallway with turn-around staircase and storage under the stairs; bright and airy lounge dining room with dual aspect windows and a fitted kitchen with a range of top and floor units providing ample storage space, integrated oven and hob and there is also access to the rear. To the first floor there are three good sized bedrooms, two with fitted wardrobes, and there is a modern family bathroom WC with four-piece suite. Further benefits include gas central heating, double glazing, solar panels and a CCTV system is installed.

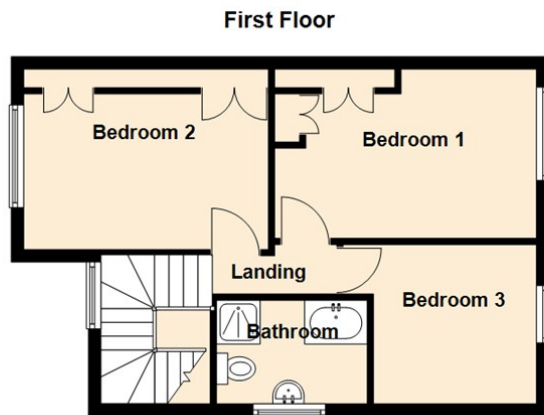
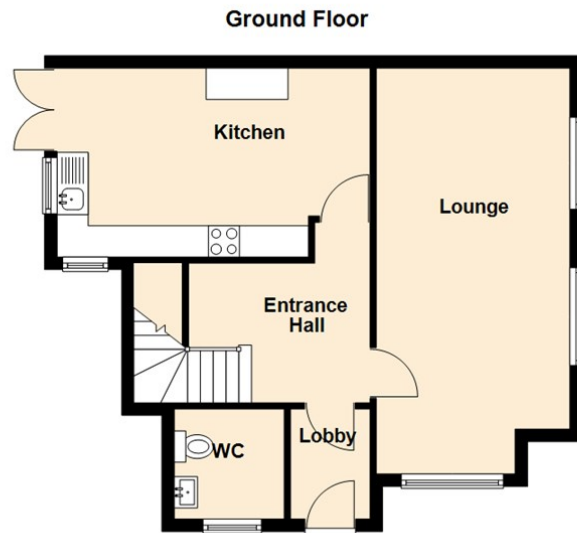
Externally, there is an easy to maintain garden to the front along with a driveway leading to the detached garage, which has been plumbed for two washers and also has a sink. There is also a charming side garden, an easy to maintain garden to the rear and external storage.

We anticipate a high level of interest in this delightful property. For more information and to book a viewing, please, call our team on 0191 236 2070.

Tenure

The agent understands the property to be freehold. However, this should be confirmed with a licenced legal representative.

Council Tax band *B*.



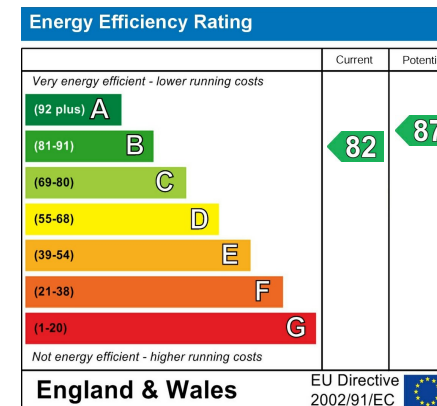
Lounge 13'3" x 21'9" (4.08 x 6.63)

Kitchen 10'3" x 17'1" (3.13 x 5.23)

Bedroom One 8'1" x 11'10" (2.47 x 3.61)

Bedroom Two 10'6" x 13'4" (3.22 x 4.08)

Bedroom Three 9'8" x 8'11" (2.96 x 2.72)



The difference between house and home

You may download, store and use the material for your own personal use and research. You may not republish, retransmit, redistribute or otherwise make the material available to any party or make the same available on any website, online service or bulletin board of your own or of any other party or make the same available in hard copy or in any other media without the website owner's express prior written consent. The website owner's copyright must remain on all reproductions of material taken from this website.



www.janforsterstates.com

Gosforth
High Heaton
Tynemouth
Property Management Centre

0191 236 2070
0191 270 1122
0191 257 2000
0191 236 2680

