





3



1



2

- Popular Location
- Three Bedrooms
- Front and Rear Gardens
- Freehold
- Viewing Recommended
- Detached Family Home
- Two Bathrooms
- Driveway and Garage
- Council Tax Band *B*
- Call For More Information





**** Video Tour on our YouTube Channel | <https://youtu.be/cunlyfR34mw>**

This delightful, three-bedroom, detached home is located in Blakelaw and will appeal to the growing family. Offered for sale with the benefit of no upper chain.

This property is ideally situated with easy access to a wealth of local amenities. It is within close proximity to top-rated schools, St James' Retail Park, and the A1 motorway, offering excellent connectivity for both work and leisure. Additionally, regular public transport services provide convenient links to Newcastle City Centre.

Internally the property briefly comprises: - entrance hallway with ground floor WC, bright and airy lounge with dual aspect windows and a kitchen dining room with fitted units providing ample storage space, along with French doors out to the rear. To the first floor there are three good-sized bedrooms, the main with an en suite and there is also a family bathroom WC. The property further benefits from gas central heating and double glazing.



Externally there is a lawned garden to the front and a garden with a patio area and lawn. There is also a driveway and garage for off street parking.

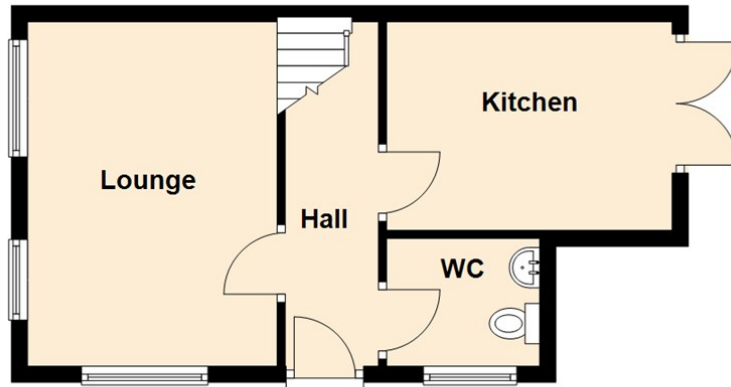
To book a viewing or for more information, please, call our Gosforth branch on 0191 236 2070.

Tenure

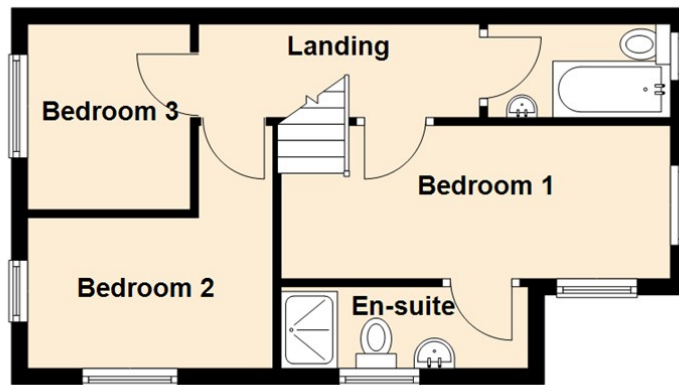
The agent understands the property to be freehold. However, this should be confirmed with a licensed legal representative.

Council Tax band *B*.

Ground Floor



First Floor



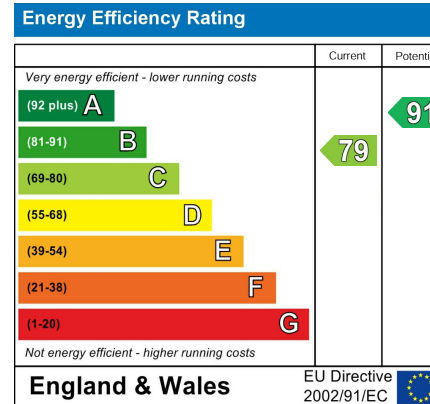
Lounge 11'11" x 136'1" (3.64 x 41.48)

Kitchen 14'7" x 10'3" (4.45 x 3.14)

Bedroom One 10'4" x 9'6" (3.15 x 2.92)

Bedroom Two 11'11" x 8'1" (3.64 x 2.47)

Bedroom Three 8'7" x 6'3" (2.64 x 1.91)



The difference between house and home

You may download, store and use the material for your own personal use and research. You may not republish, retransmit, redistribute or otherwise make the material available to any party or make the same available on any website, online service or bulletin board of your own or of any other party or make the same available in hard copy or in any other media without the website owner's express prior written consent. The website owner's copyright must remain on all reproductions of material taken from this website.



www.janforsterestates.com

Gosforth
High Heaton
Tynemouth
Property Management Centre

0191 236 2070
0191 270 1122
0191 257 2000
0191 236 2680

