







- Terraced Home
- Available NOW
- Part Furnished/Unfurnished
- Well-Presented Home
- Breakfasting Kitchen
- Ground Floor WC
- Off-Street Parking
- Local Facilities
- Transport Links
- Council Tax Band \*B\*







**\*\* Video Tour on our YouTube Channel | [https://youtu.be/6\\_RLh7y4tll](https://youtu.be/6_RLh7y4tll) \*\***

**TWO BEDROOMS | AVAILABLE NOW | UNFURNISHED**

Jan Forster Estates are delighted to welcome to the market this stunning two bedroom terraced home on Lilac Crescent, City Edge, with off-street parking, ground floor WC and private rear garden.

City Edge is only a short drive from Newcastle city centre and provides great access to the Central Motorway, A1, and an abundance of public transport and local amenities. The high quality homes are perfect for those looking to get onto the property ladder or looking for more space for their family to grow. You can enjoy green open-space walks at Newcastle Town Moor, just five minutes from your doorstep or explore hiking trails and a play area at Exhibition Park – perfect for a family day out.

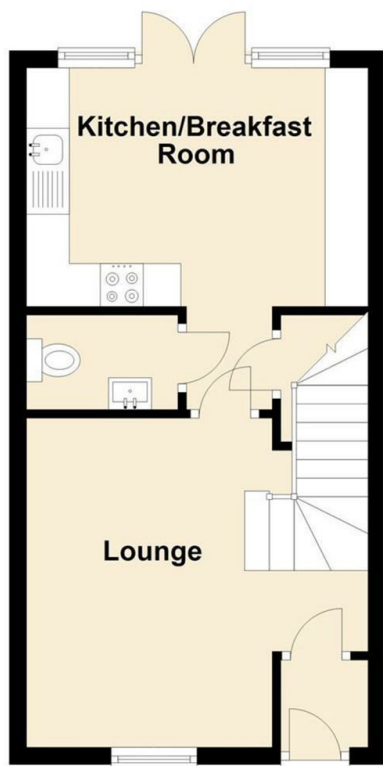
The property briefly comprises:- entrance hall, lounge, kitchen-diner with floor and wall units, under stair store and French doors opening onto the rear garden, as well as a ground floor WC. Off the landing to the first floor, you are presented with two generous bedrooms, both spanning the width of the property, and the the three piece-family bathroom with shower over the bath.

Externally, there is a small, easy to maintain town garden to the front with a driveway offering off-street parking. To the rear, there is an enclosed garden with a patio area- ideal for entertaining during those warm summer nights.

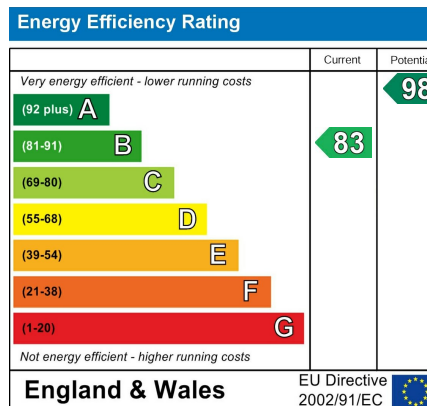
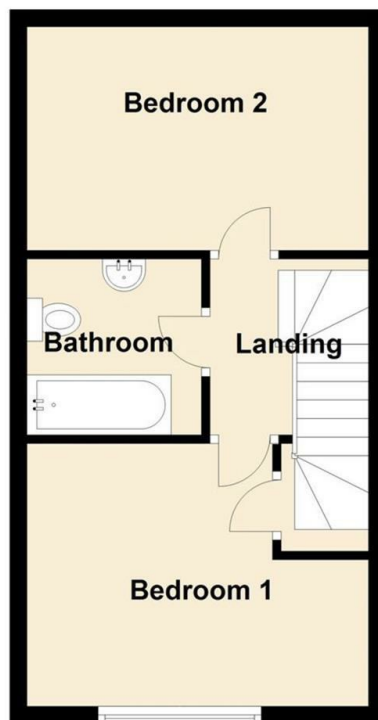
For more information and and to book a viewing please call our team on 0191 236 2070.

Council Tax band \*B\*

Ground Floor



First Floor



## The difference between house and home

You may download, store and use the material for your own personal use and research. You may not republish, retransmit, redistribute or otherwise make the material available to any party or make the same available on any website, online service or bulletin board of your own or of any other party or make the same available in hard copy or in any other media without the website owner's express prior written consent. The website owner's copyright must remain on all reproductions of material taken from this website.



[www.janforsterestates.com](http://www.janforsterestates.com)

Gosforth  
High Heaton  
Tynemouth  
Property Management Centre

0191 236 2070  
0191 270 1122  
0191 257 2000  
0191 236 2680

