





2  1  1 

- Leasehold
- On Site Warden
- Pleasant Views
- Close to Amenities
- Communal Grounds
- No Upper Chain
- Bright and Airy
- Two Bedrooms
- Shower Room
- Ground Floor





** Video Tour on our YouTube Channel |
<https://youtu.be/s9Orl9t4odE> **

Offered for sale with the benefit of no upper chain, this two bedroom spacious ground floor apartment is situated within this popular over 60's retirement complex, off Sandyford Road. With 24 hour care line and onsite warden. For sale to women over the age of 60 and gentlemen over the age of 65.

Internally the property briefly comprises: - hallway, lounge open plan to modern kitchen with a door opening on to the pleasant communal gardens, two bedrooms and a modern shower room. The apartment benefits from night storage heaters and double glazing. Externally there are mature communal gardens and parking.

For more information and to book a viewing please call our Gosforth branch on 0191 236 2070.



Tenure

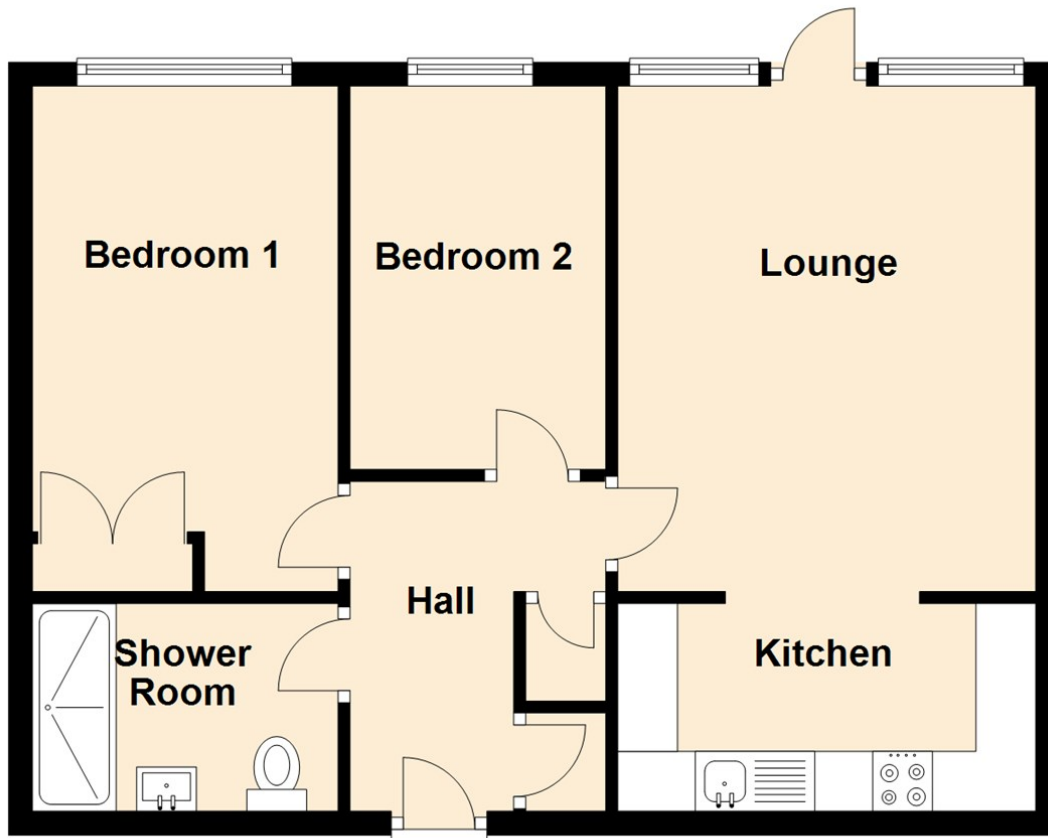
The agent understands the property to be leasehold. However, this should be confirmed with a licenced legal representative.

COVID-19 Guidelines

Although it is not mandatory, we do recommend that viewers wear appropriate PPE to protect themselves and others.

Council Tax band *B*

Ground Floor



The difference between house and home

You may download, store and use the material for your own personal use and research. You may not republish, retransmit, redistribute or otherwise make the material available to any party or make the same available on any website, online service or bulletin board of your own or of any other party or make the same available in hard copy or in any other media without the website owner's express prior written consent. The website owner's copyright must remain on all reproductions of material taken from this website.

Lounge 13'9" x 11'6" (4.21 x 3.51)

Kitchen 11'4" x 5'5" (3.46 x 1.67)

Bedroom One 8'5" x 13'10" (2.59 x 4.22)

Bedroom Two 10'5" x 7'2" (3.19 x 2.19)

| Energy Efficiency Rating | | |
|--|-------------------------|-----------|
| | Current | Potential |
| <i>Very energy efficient - lower running costs</i> | | |
| (92 plus) A | | |
| (81-91) B | | |
| (69-80) C | | 73 |
| (55-68) D | 57 | |
| (39-54) E | | |
| (21-38) F | | |
| (1-20) G | | |
| <i>Not energy efficient - higher running costs</i> | | |
| England & Wales | EU Directive 2002/91/EC | |

Gosforth

0191 236 2070

Newcastle

0191 284 4050

High Heaton

0191 270 1122

Tynemouth

0191 257 2000

Low Fell

0191 487 0800

Property Management Centre

0191 236 2680



www.janforsterstates.com

