

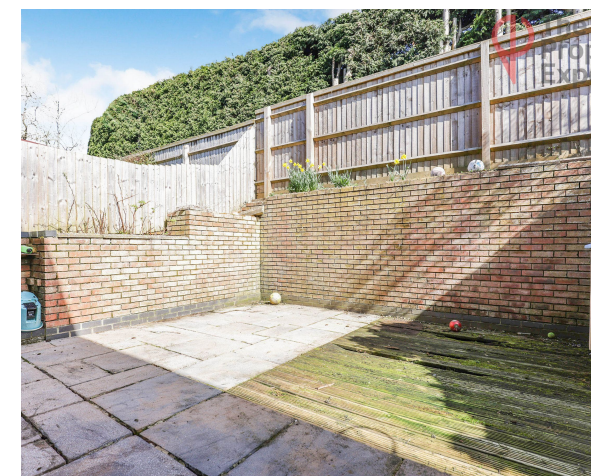


Manor Close

MIDDLETON CHENEY, BANBURY, OX17 2TA

Keri Robinson
The **Leamington & Warwick** Property Expert





Manor Close in Middle Cheney is a quiet residential area with easy access to local history and attractions. Nearby, the 12th-century Church of St. Mary and the Oxfordshire Way offer a glimpse into the past and scenic countryside walks. The village also features the welcoming Red Lion pub, perfect for a traditional meal.

Property at a glance

Family Home In Sought After Cul-De-Sac Setting

3 Bedrooms

1 Bathrooms

Parking for 1 car

2 Reception Rooms

Courtyard Garden

EPC Rating - C





A well-presented three-bedroom home, situated in a highly sought-after cul-de-sac location. This property comprises a cloakroom/WC, a fully equipped kitchen, and a dining room (formerly the garage), offering ample space for family living. The sitting room is bright and welcoming, while the three bedrooms provide comfortable accommodation. The family bathroom is well-appointed, and outside, the property benefits from a courtyard garden, perfect for outdoor relaxation.



"This three-bedroom house feels like the perfect family home. With spacious rooms, a welcoming living area, and a private garden, it offers everything a family needs in a peaceful setting"

The Seller's View

I bought this three-bedroom house in the quiet close of Middleton Cheney because it offers a peaceful and safe environment. The spacious rooms and lovely garden made it feel like the ideal home, and the location in such a quiet area really appealed to me.



Directions

Manor Close in Middleton Cheney offers easy access to transport links. Banbury Railway Station is 2.7 miles southwest, while King's Sutton Station is 3.6 miles northeast. To reach the M40, Junction 11 is about 2 miles to the west. These routes provide convenient connections to both trains and motorways.

Services

Main water, gas and electric.

Tenure

Freehold.

Local Authority & Tax Band

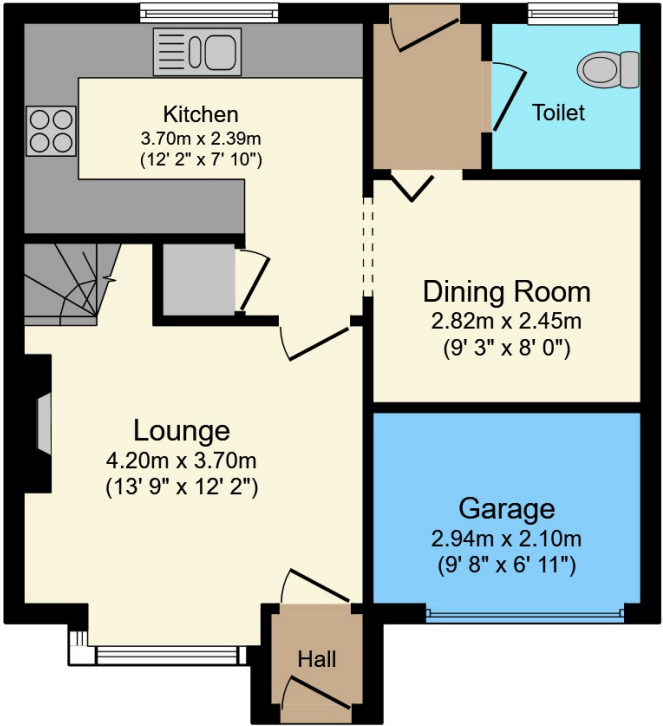
West Northampton District Council
The Guildhall, St Giles' Square
Northampton NN1 1DE
www.westnorthants.gov.uk
Tel 0300 126 7000
Tax band - C

Viewing Arrangements

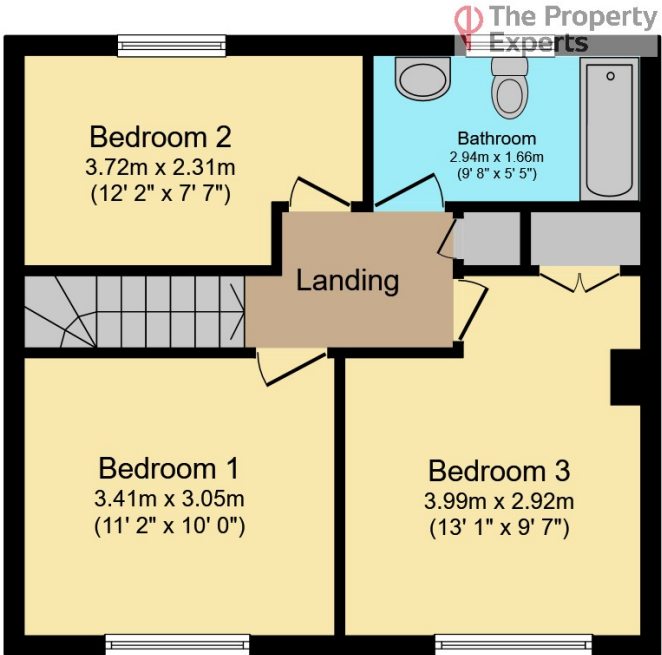
Viewing strictly by appointment with sole agent
Keri Robinson 07366235314
keri.robinson@thepropertyexperts.co.uk

Amenties/Distances

- Banbury Town Centre 4.5 miles
- Middleton Cheney Primary Academy 0.8 mile
- Banbury Train Station 4.2 miles
- Cherwell Hospital 3.2 miles



Ground Floor

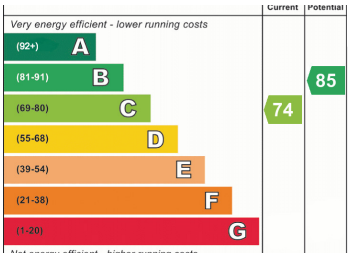


First Floor

Total floor area 88.0 m² (947 sq.ft.) approx

This floor plan is for illustrative purposes only. It is not drawn to scale. Any measurements, floor areas (including any total floor area), openings and orientation are approximate. No details are guaranteed, they cannot be relied upon for any purpose and they do not form part of any agreement. No liability is taken for any error, omission or misstatement. A party must rely upon its own inspection(s). Powered by www.focalagent.com

AGENTS NOTES
All measurements are approximate and quoted in metric with imperial equivalents and for general guidance only and whilst every attempt has been made to ensure accuracy, they must not be relied on. The fixtures, fittings and appliances referred to have not been tested and therefore no guarantee can be given and that they are in working order. Internal photographs are reproduced for general information, and it must not be inferred that any item shown is included with the property. For a free valuation, contact the numbers listed on the brochure.



About the **Area**

Middleton Cheney

Middleton Cheney is a picturesque village located in the district of Banbury, Oxfordshire, England. Situated approximately three miles southwest of Banbury town, it is nestled in the beautiful Oxfordshire countryside. The village has a rich history dating back to the Domesday Book of 1086, where it was recorded as "Middletone." Historically, Middleton Cheney was an agricultural settlement, and its economy was traditionally based on farming. Over time, the village has grown, but it still retains a rural charm with its historic buildings and surrounding scenic landscapes. Today, it is a peaceful residential community with easy access to the larger town of Banbury and the surrounding area.



Banbury

Banbury is a historic market town in Oxfordshire, England, located on the River Cherwell. Known for its heritage, it is famous for Banbury Cross and its historic association with the wool trade. The town also became renowned for Banbury cakes, a local pastry. Today, Banbury blends modern amenities with historic charm, offering shops, restaurants, and cultural attractions, while serving as a key transport hub in the region.



Keri Robinson

The **Leamington & Warwick** Property Expert

📞 07366 235314

🌐 thepropertyexperts.co.uk

✉ Keri.Robinson@thepropertyexperts.co.uk

Why choose The Property Experts to sell your property

- Dedicated personal agent, so you have one point of contact from start to finish
 - Available 7 days a week, evenings and weekends for your convenience
 - Dealing with a limited number of clients to give you a more personal service
 - An expert in marketing to provide the widest exposure to potential buyers
 - Trained in negotiation to extract the highest offer from buyers
 - Resulting in the maximum price for the seller and a smooth transaction
-

***“Having dealt with Keri at The Property Experts recently,
I can only describe her as a breath of fresh air!”***

***Her local knowledge is excellent and she clearly cares
about, and understands the house selling process fully.***

***Thank you so much for all of your help and I would have no
hesitation in recommending you to friends and family!”***

Michael



Scan QR code
to follow me on
social media

