



For Sale

19A Dale Street, Leamington Spa

Offers Over £175,000

1

1

1

46 m²

*** SITUATED RIGHT IN THE HEART OF LEAMINGTON SPA'S TOWN CENTRE IS THIS ONE DOUBLE BEDROOM APARTMENT ***

This lower ground floor apartment is situated in Dale Street in a Grade II Listed Regency Building. It is set right in the heart of Leamington Spa's vibrant town centre and comes with a share of the freehold so there is no ground rent to pay. It is within easy walking distance of the array of shops, bars, bistros, coffee shops, restaurants, schools, the cinema and parks and also an easy walk to the train station.

Nathaniel Cleaver

07793 363210

nathaniel@thepropertyexperts.co.uk

In brief the property comprises: large entrance hallway, kitchen with sash window, good sized living room with space for a table and chairs to sit and eat at, double bedroom and a good generous bathroom which also houses the washing machine. There is also a storage cupboard just off the hallway.

This apartment is ideal for first time buyers, buy to let investors or somebody looking to stay in Leamington Spa and downsize.

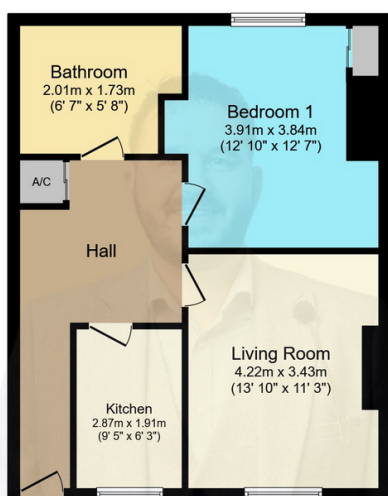
This property has use of a front courtyard and is being offered for sale with no onward chain and viewing is highly recommended.



The Property Experts

**The Property Experts -
Leamington Spa**

01926436105



Floor Plan

Floor area 53.6 m² (577 sq.ft.)

TOTAL: 53.6 m² (577 sq.ft.)

This floor plan is for illustrative purposes only. It is not drawn to scale. Any measurements, floor areas (including any total floor area), openings and orientations are approximate. No details are guaranteed, they cannot be relied upon for any purpose and do not form any part of any agreement. No liability is taken for any error, omission or misstatement. A party must rely upon its own inspection(s). Powered by www.Propertybox.io

- Lower Ground Floor Apartment
- One Double Bedroom
- Kitchen
- Lounge / Dining Area
- Bathroom
- Close To All Amenities
- Ideal First Time Buy
- Ideal Investment
- No Onward Chain
- EPC Rating - C

