



For Sale

31 Price Close East Chase Meadow, Warwick

Offers Over £190,000

***** MODERN GROUND FLOOR APARTMENT OFFERED FOR SALE WITH NO ONWARD CHAIN *****

 **2**

 **1**

 **3**

 **65 m2**

This spacious ground floor apartment is ideal for buy to let investors, first time buyers or somebody looking to stay in Warwick and downsize.

The property is positioned close to the M40, Warwick and Leamington Town centres and just over 1 mile to Warwick Parkway train station.

The property comprises in brief of; secure main entrance hallway, lounge / dining area with kitchen just off it. The master bedroom benefits from double built in wardrobes and an en suite shower room, there is a further good sized second bedroom and a modern white bathroom.

The apartment also benefits from double glazing throughout, gas central heating and one allocated parking space and has a track record of being a very good buy to let investment.

It is also only a stone's throw away from parks, a public house, local amenities and green space to enjoy walks, a bike ride or simply taking the dog out.

The apartment is being offered for sale with no onward chain and viewing is highly recommended.

Nathaniel Cleaver

07793 363210

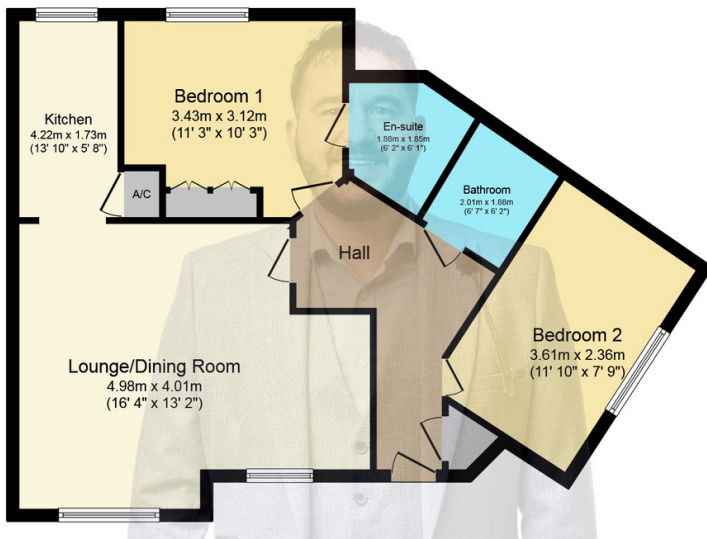
nathaniel@thepropertyexperts.co.uk



 **The Property Experts**

**The Property Experts -
Leamington Spa**

01926436105



Floor Plan

Total floor area 75.5 m² (812 sq.ft.) approx
 This plan is for illustration purposes only and may not be representative of the property. Plan not to scale. Powered by PropertyBox

- Modern Apartment
- Ground Floor
- Two Bedrooms
- Lounge / Dining Room
- Kitchen
- Allocated Parking
- Close To Local Amenities
- No Onward Chain
- EPC Rating - C



Nathaniel Cleaver
 07793 363210
 nathaniel@thepropertyexperts.co.uk