

TO LET



Bridge Farm Close , Mildenhall
£1,500 pcm


MARTIN&CO



Bridge Farm Close , Mildenhall

Town House,
4 bedroom, 3 bathroom

£1,500 pcm

Date available: 10th March 2022

Deposit: £1,600

- FOUR DOUBLE BEDROOMS
- 2 EN-SUITE SHOWER ROOMS
- THREE FLOORS
- SITTING ROOM
- KITCHEN/DINING ROOM
- CLOSE TO MILDENHALL AND LAKENHEATH AIR BASES
- EASY ACCESS A14/A11



ENTRANCE HALL Laminate wooden effect flooring, stairs leading to first floor, with storage cupboard beneath. Single radiator.

CLOAKROOM A white suite comprising low level WC, pedestal wash basin. Window to front aspect, single radiator and tiled effect laminate flooring.

SITTING ROOM 15' 0" x 10' 6" (4.583m x 3.216m) A bay window to front aspect, radiator, laminate wooden effect flooring.

KITCHEN/DINER 17' 8" x 9' 11" (5.406m x 3.03m) A fully fitted range of wall and base units. Gas 6 ring hob with electric fan oven built under. Integrated larder fridge and freezer, dishwasher. Plumbing for washing machine. Stainless steel sink and drainer. Window to rear aspect, French doors leading out to patio and garden. Tile effect laminate flooring.

FIRST FLOOR LANDING Airing cupboard housing hot

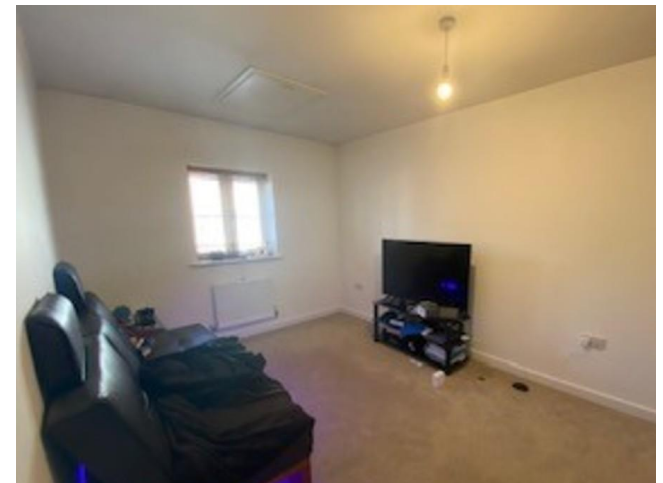
water tank and shelving.
Stairs leading to second floor.

BEDROOM TWO 11' 1" x 10' 8" (3.380m x 3.273m)
Window to front aspect, radiator.

ENSUITE Three piece suite comprising low level WC, pedestal wash basin, and mains shower inset tiled cubical with glass door. Extractor fan.

BEDROOM FOUR 11' 0" x 10' 1" (3.37m x 3.091m)
Window to rear aspect, radiator.

BEDROOM THREE 16' 9" x 9' 1" (5.108m x 2.794m) A double aspect room with window to front, and skylight to the rear.
Radiator.



FAMILY BATHROOM 6' 7" x 7' 8" (2.012m x 2.357m)
A white fitted suite comprising, low level WC, panelled bath with both mixer tap shower head and mains shower over and a pedestal wash basin. Part tiled walls and laminate tiled effect flooring. Storage cupboard.

SECOND FLOOR LANDING Storage cupboard with light

MASTER BEDROOM 15' 10" x 9' 11" (4.827m x 3.046m) Window to front aspect, radiator, built in wardrobes with mirrored doors.

ENSUITE A white three piece suite comprising low level WC, pedestal wash basin and a mains shower inset cubical with tiled surrounds and glass door. Tiled effect laminate flooring. Extractor fan.

OUTSIDE The rear garden is fully enclosed, a good sized lawn area and patio. Side access via gate leading to driveway and garage.

GARAGE Up and over door, power and light with door leading out to rear garden.





Martin & Co Newmarket

3-7 Old Station Road • • New market • CB8 8DT
 T: 01638 596322 • E: newmarket@martinco.com

01638 596322

<http://www.martinco.com>



Accuracy: References to the Tenure of a Property are based on information supplied by the Seller. The Agent has not had sight of the title documents. A Buyer is advised to obtain verification from their Solicitor. Items shown in photographs including but not limited to carpets, fixtures and fittings are not included unless specifically mentioned within the sales particulars. They may however be available by separate negotiation. Buyers must check the availability of any property and make an appointment to view before embarking on any journey to see a property. No person in the employment of the agent has any authority to make any representation about the property, and accordingly any information given is entirely without responsibility on the part of the agents, sellers(s) or lessors(s). Any property particulars are not an offer or contract, nor form part of one. **Sonic / Laser Tape:** Measurements taken using a sonic / laser tape measure may be subject to a small margin of error. **All Measurements:** All Measurements are Approximate. **Services Not tested:** The Agent has not tested any apparatus, equipment, fixtures and fittings or services and so cannot verify that they are in working order or fit for the purpose. A Buyer is advised to obtain verification from their Solicitor or Surveyor.