

3
BED

A Detached Bungalow on a Corner Plot

8, St. Margarets Rise, Seaford, BN25 2RX



Price £375,000

Freehold

phillipmann
we do more

www.phillipmann.com

8 St Margarets Rise, BN25 2RX
Approximate Gross Internal Floor Area = 94.83 sq m / 1021 sq ft
Garage Area = 12.19 sq m / 131 sq ft
Total Area = 107.03 sq m / 1252 sq ft

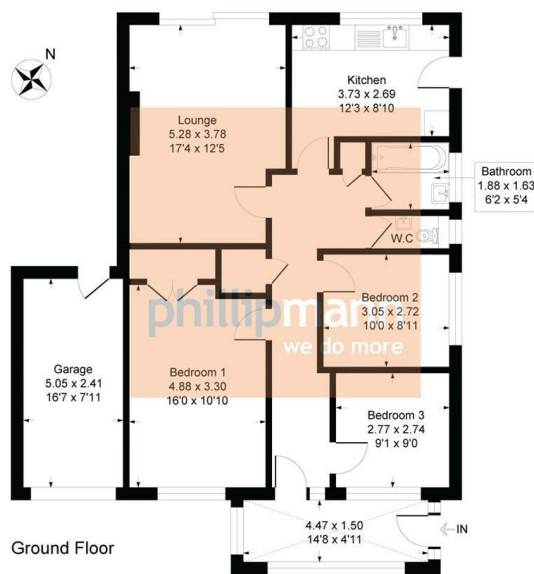


Illustration for identification purposes only, measurements are approximate, not to scale

inbrief...

Phillip Mann estate agents are delighted to offer for sale this detached bungalow situated in Bishopstone. The property does require some updating but is situated on a large corner plot which offers scope for a side extension STC.

The property has a good size sun room to the front and leads to the main hallway. The entrance hall has an electric heater, loft access, an airing cupboard and further storage cupboards.

The living room is to the rear and has a decorative fireplace with an inset electric fire, a T.V point and patio doors to the rear garden.

The kitchen has been fitted with a range of wall and base units with an inset sink and cupboards below, plumbing and space for a washing machine, dish washer, fridge freezer and cooker recess, a window to the rear and a door to the side.

There are three bedrooms. The main bedroom is a good size double room with built in wardrobes and a window to the front. The second bedroom is a good size bedroom and overlooks the front while bedroom three is to the side.

The bathroom has a panel bath with mixer taps and an electric shower over, wall mounted wash hand basin, tiled walls and a window to the side.

The cloakroom has a close coupled w/c, wall mounted wash hand basin, tiled walls and a window to the side.

Outside there is a large rear garden with a paved patio area, a large lawn with a variety of shrubs and plants. The front garden is open plan offering off road parking and access to the garage with an up and over door.



Council Tax Band: D

Energy Rating: G

moreinfo...



Phillip Mann Seaford Office
1-3 Dane Road, Seaford, East Sussex, BN25 1LG
01323 898666

To see more details on this & all our homes go to
www.phillipmann.com