

2  
BED

# Sea Views With A Balcony!

Dane Heights Flat 2, Dane Close, Seaford, BN25 1EA

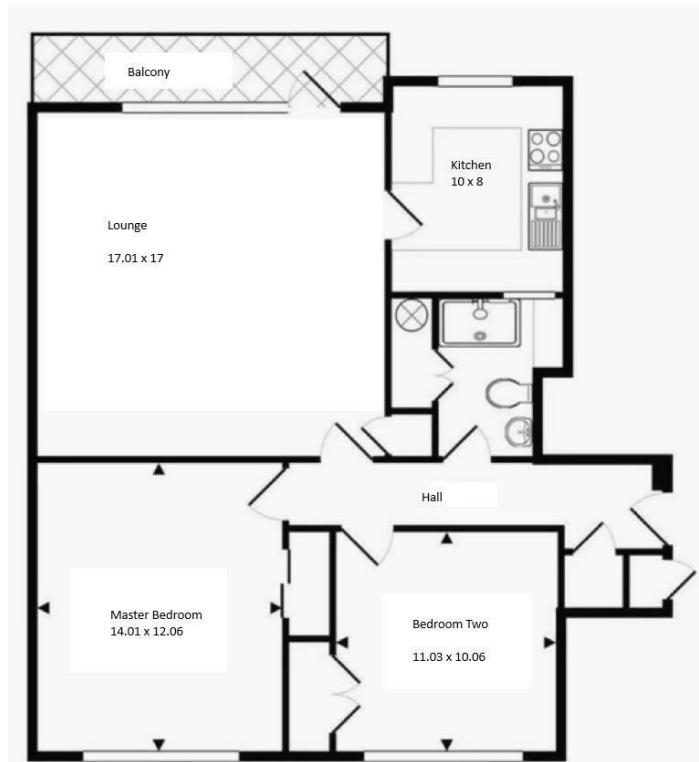


Price £225,000

Leasehold - Share of Freehold

**phillipmann**  
we do more

[www.phillipmann.com](http://www.phillipmann.com)



## inbrief...

Phillipmann estate agents are delighted to offer this 2 bedroom 1st floor flat with excellent sea views in the heart of Seaford, approx. 150 yards from the seafront and close to shops station and bus services. Features include; kitchen lounge/dining room, two double bedrooms with built in wardrobes bathroom, uPVC double glazing, electric heating, parking space outside the flat and benefits from a Share of Freehold and remainder of 999 year lease. VACANT POSSESSION.

Entering the flat you are welcomed into a open hallway.

On the right as you walk into the flat you will find the bathroom, this is part tiled and includes a sink vanity unit, W/C, bath with electric power shower attachment and an extractor fan.

Heading down the hall the second bedroom is on your left, this is a good size double overlooking the back of the block. This room has built in wardrobes, space for chest of drawers, bedside tables, wardrobes, multiple outlets and Tv points.

Further down, the master bedroom can be found. This includes, built in storage, double bed space, chest of drawers, bedside tables, multiple outlets and a TV point.

The large lounge is next to the master bedroom, this has a door out to the balcony, sea views and can seat quite a large number of people. This room is a key feature of the flat as it is a lovely bright room.

The kitchen is just off the lounge and includes multiple base and wall hung units, fridge freezer space, dishwasher space, wooden worktops and sea views.

### KEY INFORMATION:

Share of Freehold

Years Left on Lease: TBC

Maintenance Charge: £2827

Managing Agent Charles Cox



Council Tax Band: C

Energy Rating Level: E

## moreinfo...



Phillip Mann Seaford Office  
1-3 Dane Road, Seaford, East Sussex, BN25 1LG  
01323 898666

To see more details on this & all our homes go to  
[www.phillipmann.com](http://www.phillipmann.com)