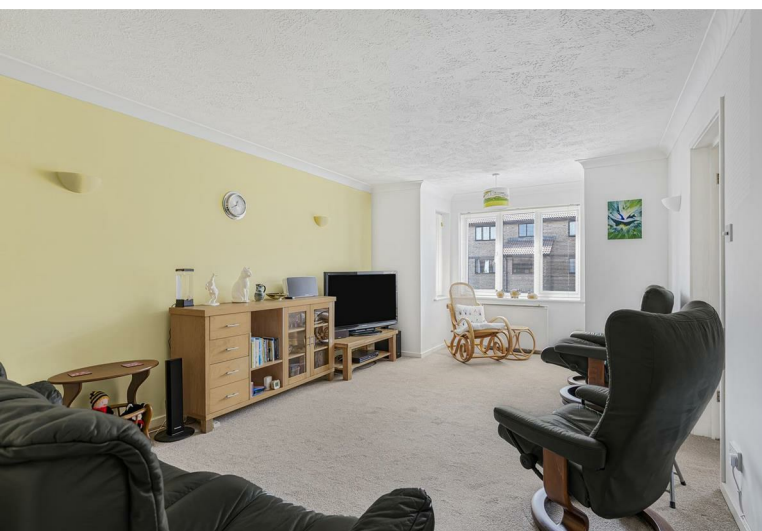


2
BED

A First Floor Flat Near The Town and Seafront

Flat C, 2 The Boundary, The Boundary, Seaford, BN25 1DG



Price £230,000

Share of Freehold

phillipmann
we do more

www.phillipmann.com

Flat C, 2 The Boundary, BN25 1DG

Approximate Gross Internal Floor Area = 65 sq m / 700 sq ft



Illustration for identification purposes only, measurements are approximate, not to scale.

inbrief...

Phillip Mann estate agents are delighted to offer for sale this well presented 2 bedroom first floor flat. Situated close to Seaford town, within easy reach of the seafront and buses to Brighton and Eastbourne.

The property benefits from electric heating, double glazing a share of the freehold and allocated parking.

There is a communal entrance with door entry phone and stairs that lead to the first floor and private door to flat C. The hallway has a storage cupboard, a large airing cupboard housing a hot water tank and door entry phone.

The living room is a good size room with a large bay window to the front, a T.V and telephone point. The kitchen has been fitted with a good range of wall and base units comprising a stainless steel sink and drainer unit with mixer taps set into the complimentary working surface, there are cupboards below, a cooker recess, further appliance space, part tiled walls and a window to the front.

There are two good size double bedrooms which overlooking the rear of the property, both rooms have electric heaters. The bathroom has been fitted with a white suite comprising a panel bath with an electric shower over, a pedestal wash hand basin, close coupled w/c, tiled walls, an electric heater and a window overlooking the rear.

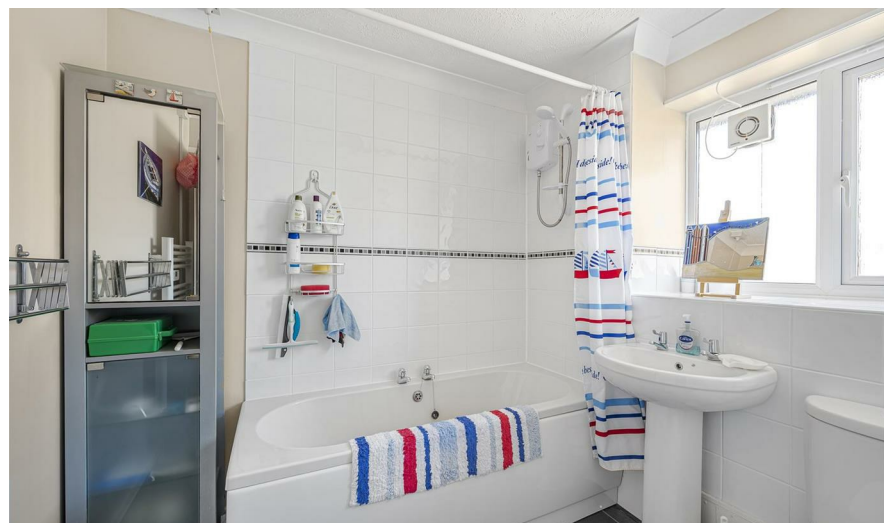
Outside there are communal gardens, a bin storage cupboard and allocated parking to the rear.

Outgoings:

Lease: 999 years from Jan 1999

Service Charge: £1200.00 per annum

SHARE OF FREEHOLD.



Council Tax Band: B

Energy Rating: D

moreinfo...

Phillip Mann Seaford Office
1-3 Dane Road, Seaford, East Sussex, BN25 1LG
01323 898666



To see more details on this & all our homes go to www.phillipmann.com