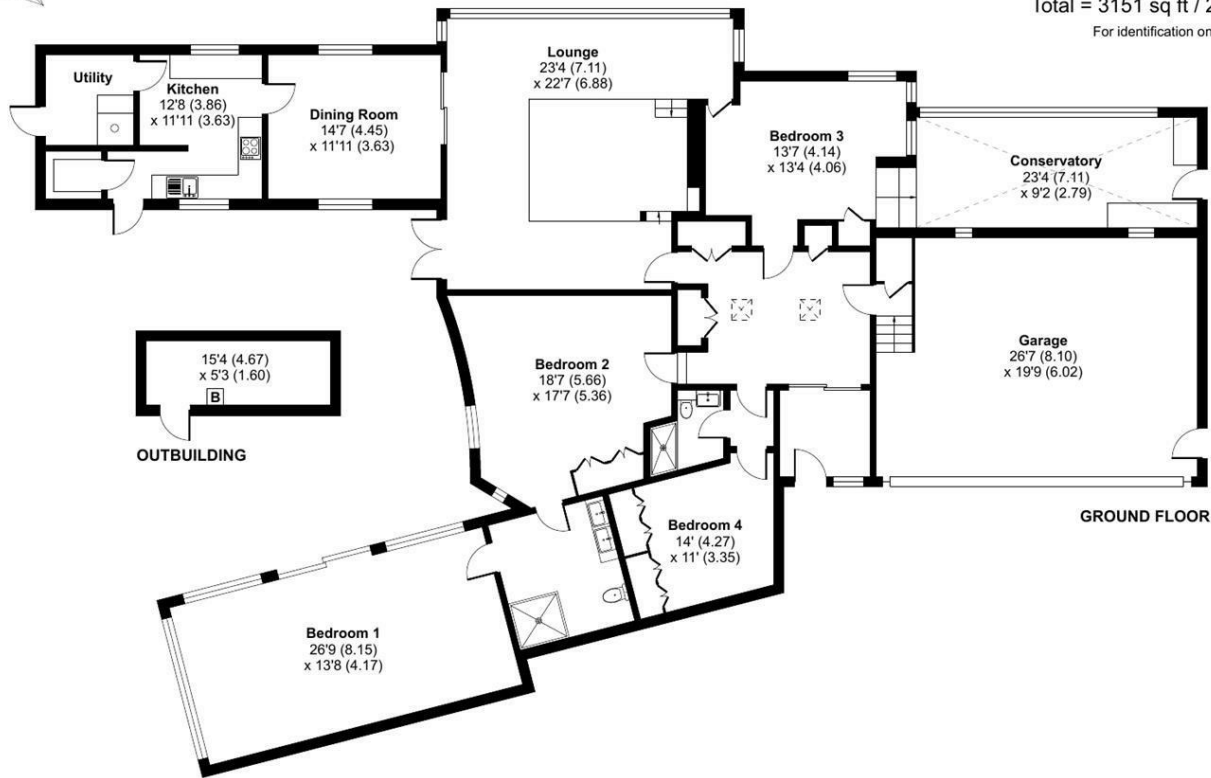


# Jevington Road, Friston, Eastbourne, BN20

Approximate Area = 2540 sq ft / 236 sq m  
Garage = 529 sq ft / 49.1 sq m  
Outbuilding = 82 sq ft / 7.6 sq m  
Total = 3151 sq ft / 292.7 sq m  
For identification only - Not to scale



Floor plan produced in accordance with RICS Property Measurement Standards incorporating International Property Measurement Standards (IPMS2 Residential). © nichecom 2024. Produced for Phillip Mann Estate Agents. REF: 1131503

# 3 BED

## A Stunning Individual House with Views Taperfield, Jevington Road, Eastbourne, BN20 0AG



### localknowledge...

Friston, East Sussex: Set in the idyllic South Downs, Friston is renowned for its tranquil ambiance, stunning landscapes, and prestigious community. This charming village offers a perfect blend of peaceful country living with easy access to the vibrant culture and amenities of nearby towns.

### moreinfo...

Phillip Mann Seaford Office

1-3 Dane Road, Seaford, East Sussex, BN25 1LG  
01323 898666

To see more details on this & all our homes go to  
[www.phillipmann.com](http://www.phillipmann.com)



we do more...  
keeping  
customers  
happy

# No.1 sellers

in Seaford, Newhaven  
and Peacehaven

## Offers Over £1,500,000

Freehold

# phillipmann

we do more

# inbrief...

An opportunity to purchase this individual detached property situated in Friston. Offering good size accommodation throughout to include a large living room with sunken seating area, kitchen and dining room, master bedroom with en-suite shower room, large second bedroom with a en-suite shower room, sun room, indoor swimming pool, maintained gardens, off road parking and a double garage.

<b>Style:</b>	Detached Family Home
<b>Bedrooms:</b>	3 Double Bedrooms
<b>Reception rooms:</b>	3 Reception Rooms
<b>Area:</b>	3151 sq ft/ 292.7sqM
<b>Outside:</b>	Aprox 0.6 Acres
<b>Parking:</b>	Off Road and Double Garage
<b>Energy rating:</b>	D
<b>Council Tax Band:</b>	G

# moredetail...

Phillip Mann estate agents are excited to offer a once in a lifetime opportunity to purchase this stunning, individual detached home. The property comes complete with plans to re-build and design a modern mansion which could include 5 bedrooms, 5 bathrooms, an indoor gym, steam room, sauna, cinema room, bar and much more!

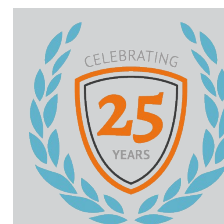
Situated in Friston, East Sussex this Sven Hoyer designed property offers spacious living accommodation throughout, stunning views, a courtyard garden, indoor swimming pool and a double garage.

The spacious entrance has useful storage cupboards and leads to an open plan living room with sunken seating area, open fire and full height windows to the rear with views over Friston Forest. The kitchen has been fitted with a good range of wall and base units comprising a sink and drainer unit, built in oven and hob, appliance space and useful utility room with plumbing and space for a washing machine and tumble dryer. There is an adjoining dining room with full height windows to the front and rear.

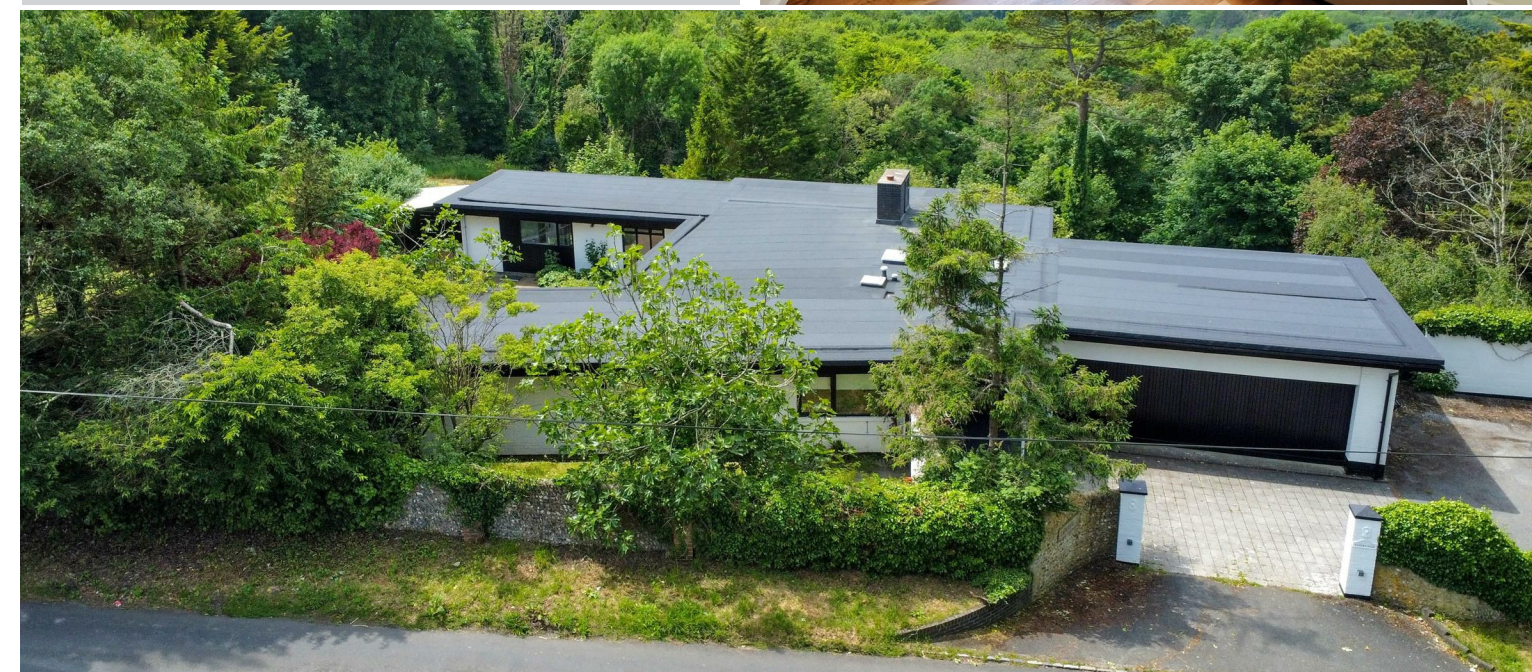
There are currently three bedrooms; the principle bedroom is a large double room with a range of built in wardrobes and en-suite shower room with 'his and hers' sinks, a large shower, close coupled w/c and a window to the side. Bedroom two is a good size double room and also has the benefit of an en-suite shower room while bedroom three enjoys stunning views towards the rear. The property has a sun room to the rear and an indoor swimming pool.

Outside there are well maintained gardens to include a secluded inner courtyard with a variety of plants and shrubs, maintained lawn area's with trees and stunning views. To the front the property offers ample off road parking and access to the double garage with up and over door, power and lighting.

Viewings are highly recommended and early inspection is a must to avoid disappointment.



For further information on this stunning house or to arrange a viewing please call us on 01323 898666 or email [seaford@phillipmann.com](mailto:seaford@phillipmann.com)



# Bear in mind...

This property offers huge potential and plans permission to re-build a 5 bedroom mansion with a gym, sauna, cinema room and so much more!