

1
BED

Located in Heart of Town
12, Croft Court, Seaford, BN25 1SB

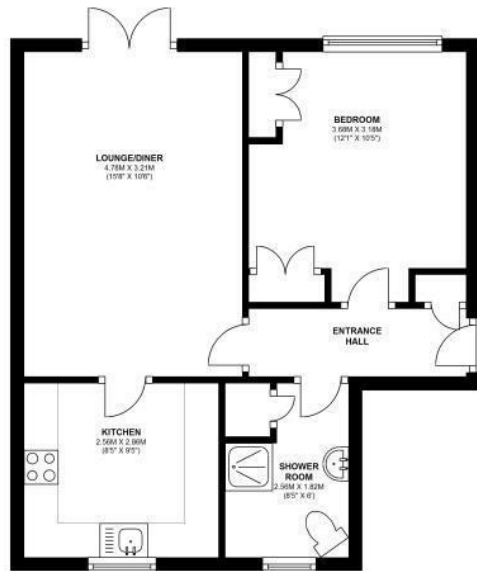


£155,000

Leasehold

phillipmann
we do more

www.phillipmann.com



Whilst every attempt has been made to ensure the accuracy of the floor plan contained here, Measurements of doors, windows, rooms, and any other items are approximate and no responsibility is taken for any errors, omissions or mis-statement. This plan is for illustrative purposes only and should be used as such by any prospective purchaser. Plan produced using The Mobile Agent.

12 CROFT COURT

inbrief...

This rarely available 1 bedroom retirement flat is located in a sought after development in the heart of Seaford town centre, within an easy walk to Broad Street shopping thoroughfare, train station and a regular bus service to Brighton/Eastbourne.

As you enter the development off Croft Lane there is a large gravel area with residents parking and house managers office who is on call Mon/Wed/Fri am. A pathway leads through attractive well maintained communal gardens to Croft Court. There is a security entry phone system and lift/stairs to all floors.

Flat 12 is located on the first floor and you enter the flat the hall has a useful cloaks cupboard and modern night storage heater (installed 2021).

The good size double bedroom has a good range of fitted wardrobes providing good storage space, electric heater and window with pleasant outlook over the communal gardens.

Located directly opposite the bedroom the shower room has a large glass shower cubicle with electric shower, WC, pedestal wash basin, heated towel rail, tiled walls and airing cupboard housing the immersion heater (installed 2021).

The lounge/dining room has full height sliding glass doors with 'Juliette' balcony having a pleasant outlook over the communal gardens and night storage heater.

Off the lounge there is a good size kitchen with a range of wall and base cupboards with ample working surface having tiled splash backs, inset stainless steel sink, electric hob and oven, space for washing machine, fridge/freezer and window with south aspect providing lots of natural light.

Further benefits of the property include double glazed windows and a 24 hour care alarm system installed.

OUTGOINGS : Service Charge £1050 per 1/4 - Ground Rent £37.50 per 1/4

LEASE : 139 years from 1985.



Energy Rating - C

Council Tax Band - B

moreinfo...

Phillip Mann Seaford Office
1-3 Dane Road, Seaford, East Sussex, BN25 1LG
01323 898666



To see more details on this & all our homes go to
www.phillipmann.com