

2  
BED

# A Modern Town Centre Cottage with Parking

Lavender Blue 12, Crouch Lane, Seaford, BN25 1PS

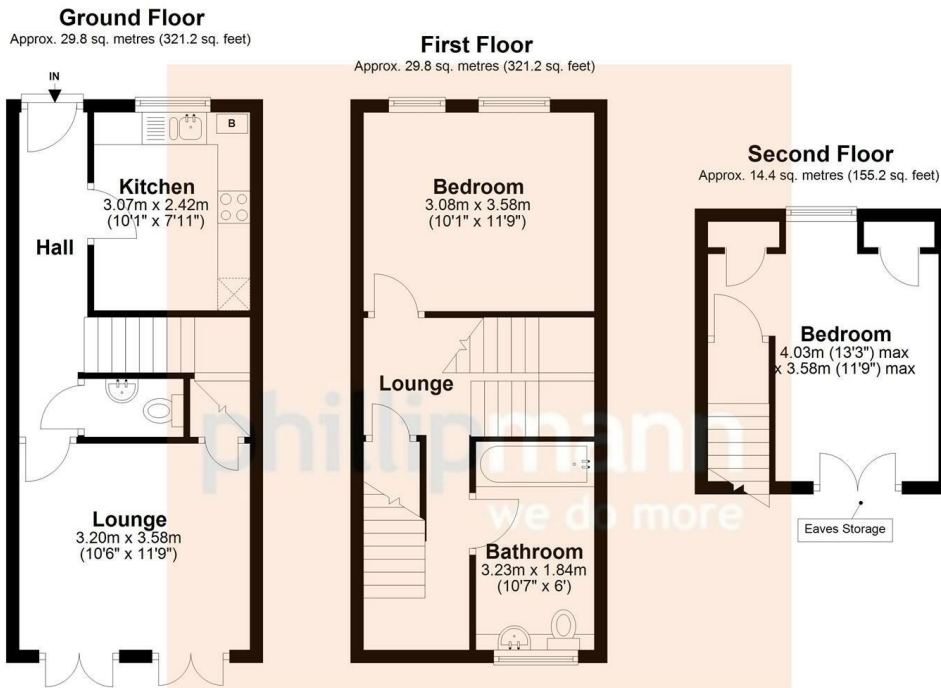


Price £329,950

Freehold

**phillipmann**  
we do more

[www.phillipmann.com](http://www.phillipmann.com)



Total area: approx. 74.1 sq. metres (797.5 sq. feet)

This floor plan is for illustrative purposes only. All measurements are approximate.

## inbrief...

Phillip Mann estate agents are delighted to offer for sale this well presented 2 bedroom house. Situated close to Seaford town, buses and the seafront this charming house offers good size accommodation, gas fired central heating, double glazing and a patio garden.

The entrance has a uPVC double glazed door and a radiator. The cloakroom has been fitted with a low level w/c, wall mounted wash hand basin and a radiator. The kitchen has been fitted with a range of wall and base units comprising a sink and drainer set into the working surface, plumbing and space below for a washing machine, built in electric oven and electric hob with filtered hood over, integrated fridge freezer, wall mounted boiler and a window to the front.

The living room is to the rear and benefits from a radiator, T.V point, under-stairs cupboard and doors onto the rear paved patio area. There are stairs to the first floor with an under-stairs cupboard and a radiator. The main bedroom is a good size double room with a radiator and window to the front. The family bathroom has been fitted with a white suite with a panel bath with mixer taps and shower attachment, close coupled w/c and pedestal wash hand basin, a ladder style towel rail part tiled walls and a window to the rear. There are stairs to the second floor bedroom with eaves storage, a built in cupboard and window to the front with views towards the sea.

Outside there is a paved patio area with planted boarder. The front is open plan with private parking for one vehicle. No ongoing chain.



Council Tax Band: C

Energy Rating: C

moreinfo...



Phillip Mann Seaford Office  
1-3 Dane Road, Seaford, East Sussex, BN25 1LG  
01323 898666

To see more details on this & all our homes go to  
[www.phillipmann.com](http://www.phillipmann.com)