



Francis Road | | Leyton | E10 6PL

£1,500 Per Month



STRETTONS



## Key features

- First Floor Flat
- Two Bedrooms (One Doubles & One Single)
- Private Rear Garden
- Unfurnished (No Kitchen Appliances)
- Part Double Glazed Windows & Gas Central Heating
- Unfurnished
- Available from 9th May 2025
- Within 0.6 Miles to Both Leyton & Leytonstone Underground Station (Central Line)
- \*\*\* EPC Rating: D (62) \*\*\* Council Tax Band = B
- \*\*\* Available on a 12 Month Assured Shorthold Tenancy Agreement \*\*\* Deposit = 5 Weeks Rent (? 1,730)

## Description

Nestled on the charming Francis Road in Leyton, London, this delightful garden flat offers a perfect blend of comfort and convenience. Spanning an impressive 710 square feet, the property boasts two well-proportioned bedrooms, making it an ideal choice for couples, small families, or those seeking a spacious home office.

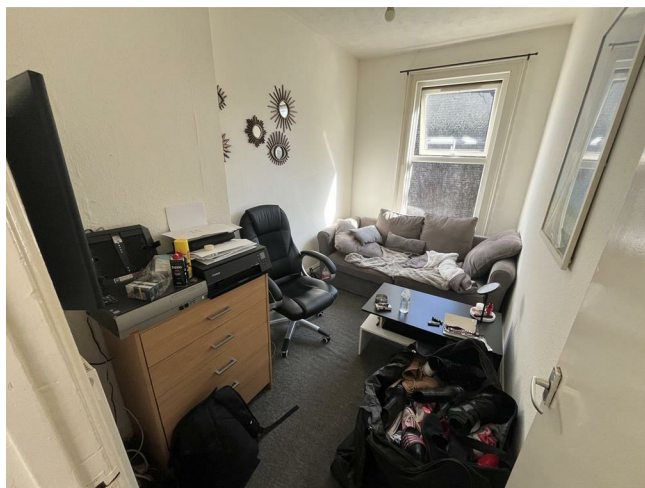
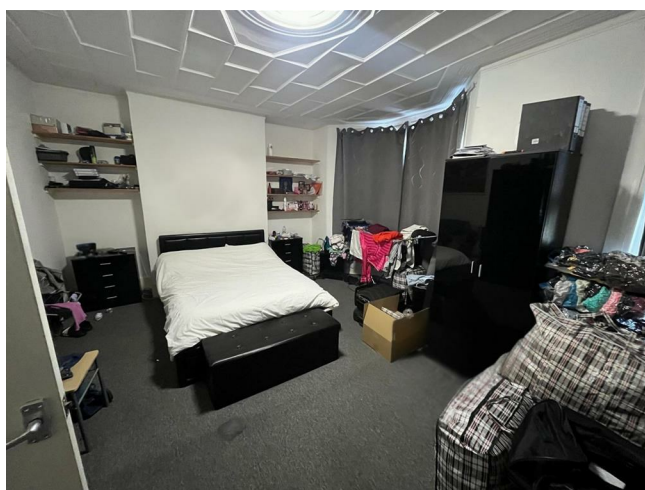
Upon entering, you are welcomed into a bright and airy reception room, perfect for relaxation or entertaining guests. The flat's layout is thoughtfully designed, ensuring a seamless flow between the living spaces. The kitchen is well-equipped, providing ample storage and workspace for culinary enthusiasts.

The property features a modern bathroom, designed with both style and functionality in mind. The garden, a rare find in London flats, offers a private outdoor space where you can unwind, enjoy a morning coffee, or host summer barbecues.

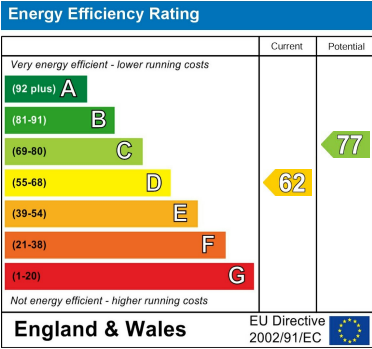
Built in 1900, this flat retains a sense of character and charm, while also benefiting from modern amenities. Its location on Francis Road places you within easy reach of local shops, cafes, and parks, making it a vibrant community to call home.

With excellent transport links nearby, commuting to central London is both quick and convenient. This property presents a wonderful opportunity for those looking to settle in a lively area with a strong sense of community. Don't miss the chance to make this charming flat your new home.

## Directions







Council Tax Band **B**     EPC Rating **D**



69 Paul Street  
London  
London  
EC2A 4NG  
02085 094406  
michael.mercer@strettons.co.uk