

15 Heath Park Avenue,

Heath, Cardiff, CF14 3RF



Estate Agents and
Chartered Surveyors

Asking Price Of

£605,000



Semi-Detached House

4

2

3

3

Property Description

Traditional four bedroom semi detached home in Heath. Offering original period features with a spacious rear garden. Internally the property accommodation briefly comprises; entrance hallway, cloakroom, lounge, sitting room, dining room, and kitchen can all be found to the ground floor. To the first floor you will find bedrooms one with ensuite, bedroom two, three, and four plus a family bathroom complete with three piece suite.

Tenure Freehold

Council Tax Band G

Floor Area Approx 1,980 sq ft

Viewing Arrangements
Strictly by appointment

PROPERTY DESCRIPTION

A traditional four bedroom semi detached home in the heart of Heath situated upon Heath Park Avenue, Cardiff. The home spacious living accommodation throughout and is ideal for a growing family. Internally the property accommodation briefly comprises; entrance hallway, cloakroom, lounge, sitting room, dining room, and kitchen can all be found to the ground floor. To the first floor you will find bedrooms one with ensuite, bedroom two, three, and four plus a family bathroom complete with three piece suite.

Outside the home you will find a block paved driveway ideal for parking with a side door leading to the rear garden. The rear garden offers a paved patio with the remainder laid to lawn. A range of plants, trees and shrubbery also offer privacy to the rear.

LOCATION

Located in the sought after area of Heath in North Cardiff, the University Hospital of Wales and Heath Park are a stone's throw away. Birchgrove is a short walk away with supermarket, cafes, many take out restaurants, pubs and much more. There are well regarded primary schools in the area.

Public transport links are good to the city centre and beyond.

ENTRANCE HALL

Enter into hallway. Doors leading to cloakroom, lounge, sitting room, and dining room.

CLOAKROOM

Fitted with a traditional three piece suite comprising WC and wash hand basin. Side facing window.

LOUNGE

Bay window to front with original stained glass window. Feature fire place with marble hearth. Glazed panel doors between the lounge and sitting room. Original coving to ceiling.

SITTING ROOM

Feature fireplace and surround. Window to rear with French doors leading to rear garden. Originally restored flooring and original coving.

DINING ROOM

Woodblock flooring, original coving. Window to side and door leading into kitchen.

KITCHEN

fitted with a range of base and eye level

units with granite worktops over. Inset sink unit plus drainer. Built in oven, grill, hob and cooker hood. Built in under counter fridge and freezer. Enclosed glass brick utility area housing washing machine and central heating boiler. Tiled flooring with paneled ceiling. Door leading to rear garden.

LANDING

Access to all first floor rooms.

BEDROOM ONE

Bay window to front. Fitted wardrobes with hanging space. Door leading into ensuite shower room.

ENSUITE

Fitted with a three piece suite comprising shower, WC and wash hand basin.

BEDROOM TWO

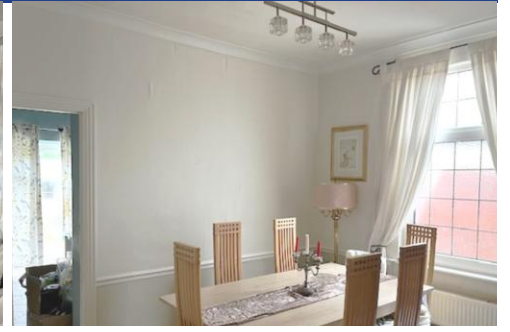
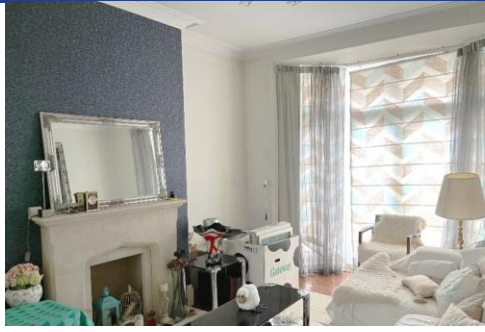
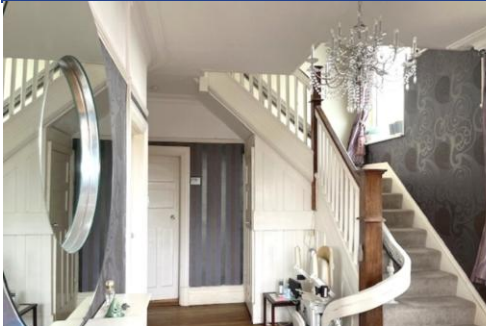
Window to front. Original fireplace and surround.

BEDROOM THREE

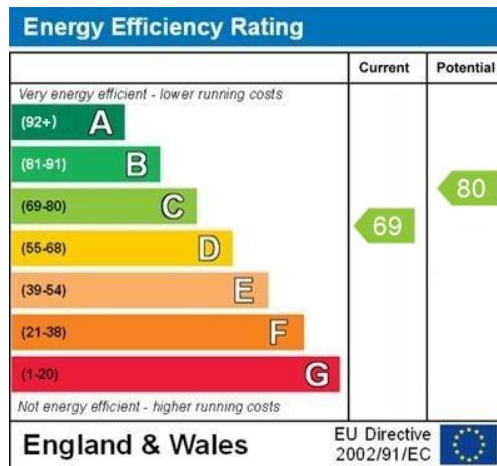
L shaped bedroom with fitted wardrobes. Door leading to rear balcony.

BEDROOM FOUR

15 Heath Park Avenue,
Heath, Cardiff, CF14 3RF



15 Heath Park Avenue,
Heath, Cardiff, CF14 3RF



Birchgrove 029 2052 9026

Birchgrove, 114 Caerphilly Road, Cardiff, South
Glamorgan, CF14 4QG



mgyc.co.uk

Important Notice: These particulars are prepared for guidance only and do not form whole or any part of any offer or contract. Whilst the particulars are given in good faith, they are not to be relied upon as being a statement or representation of fact. They are made without responsibility on the part of MGY Ltd or Vendor/lessor and the prospective purchaser/lessee should satisfy themselves by inspection or otherwise as to their accuracy. Neither MGY Ltd nor anyone in their employ, or the vendor/lessor, imply, make or give any representation/warranty whatsoever in relation to this property.