



73 Harrington Road
Loddington, NN14 1JZ



Simpson & Partners

73 Harrington Road

Situated on the edge of Loddington village, this exceptional five/six bedroom detached home offers the perfect blend of rural charm and modern amenities, making it an ideal choice for those seeking a spacious and luxurious country residence with stunning views.

🛏 5 🚿 4 🚗 3



About the Property

Approx 2346 sqft - A stunning five/six bedroom detached home sits on the outskirts of Loddington village, offering breathtaking country vistas. This magnificent property boasts an array of features, including double glazing and oil radiator heating for comfort throughout the year. The heart of the home is a spacious 24' kitchen/dining room, complete with built-in appliances for convenience. A separate utility room provides additional space for laundry and storage.

The 17' sitting room is a warm and inviting space, featuring a charming fireplace that opens up to a delightful garden room. This bright and airy space provides direct access to the beautifully landscaped rear garden, perfect for outdoor entertaining or relaxation. On the ground floor, you'll also find a downstairs WC and a well appointed bedroom/study with its own en-suite shower room, ideal for guests or multi-generational living.

Ascending to the first floor, you'll discover a 17' bedroom one, complete with fitted wardrobes and a private en-suite for the ultimate in comfort and privacy. A second 17' bedroom also benefits from fitted wardrobes and an en-suite bathroom, bedroom three also benefits from fitted wardrobes, while two additional bedrooms offer space for family or guests. A family bathroom suite completes this level, catering to the needs of all residents.

The property is surrounded by immaculately maintained front and rear gardens, providing a tranquil retreat from the hustle and bustle of daily life. Off road parking is available, along with a garage for secure vehicle storage or additional storage space.

Situated on the edge of Loddington village, this exceptional five/six bedroom detached home offers the perfect blend of rural charm and modern amenities, making it an ideal choice for those seeking a spacious and luxurious country residence with stunning views.

Price £645,000



Entrance Hall:
Downstairs WC:
Kitchen/Dining Room:
Utility Room:
Sitting Room:
Garden Room:
Study/Bedroom
En-Suite Shower Room:
First Floor Landing:
Bedroom 1:
En-Suite Shower Room:
Bedroom 2:
En-Suite
Bedroom 3:
Bedroom 4:
Bedroom 5:
Bathroom:







Superb Family Home with Stunning Views!





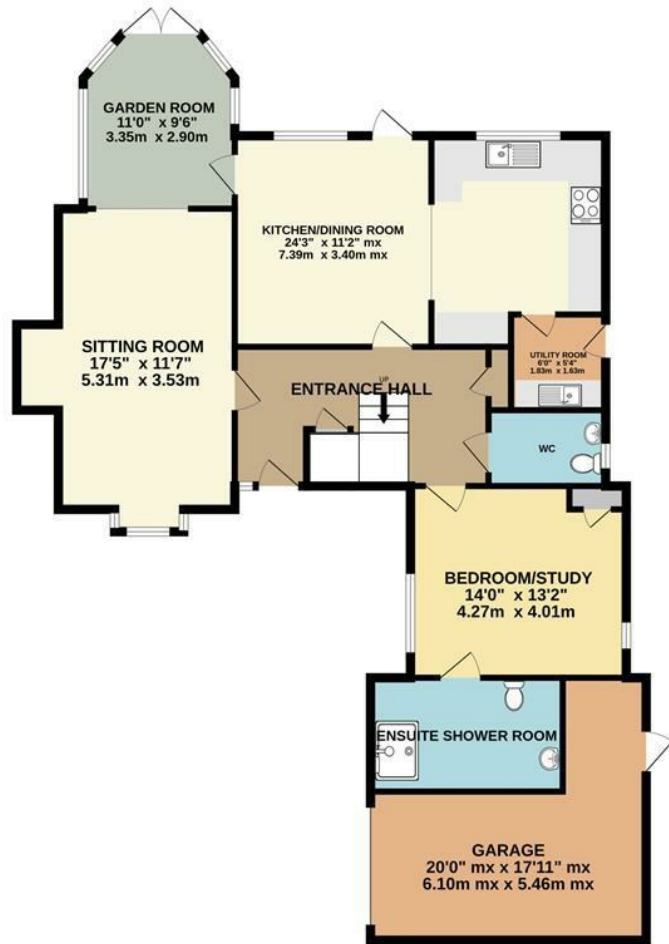


Energy Efficiency Rating

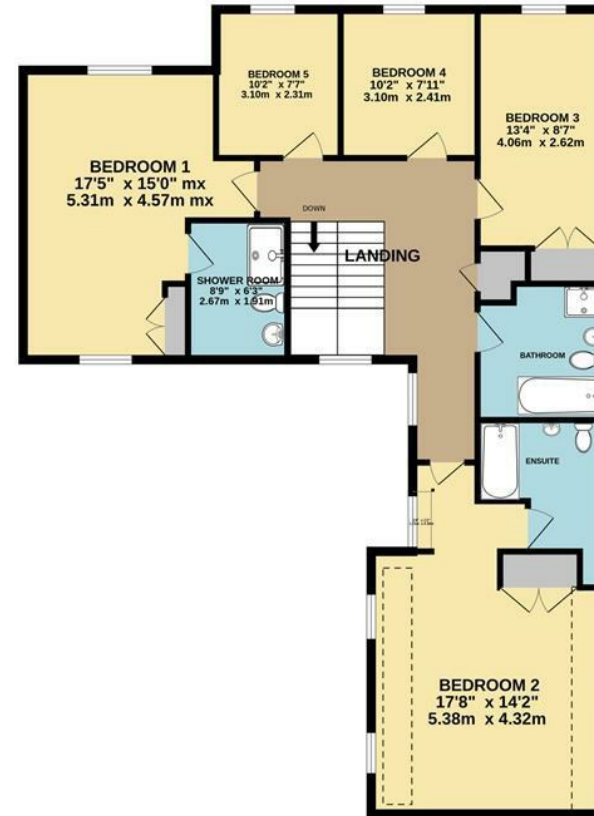
	Current	Potential
Very energy efficient - lower running costs		
(92 plus) A		
(81-91) B		
(69-80) C		73
(55-68) D	62	
(39-54) E		
(21-38) F		
(1-20) G		
Not energy efficient - higher running costs		
England & Wales	EU Directive 2002/91/EC	



GROUND FLOOR



1ST FLOOR



OUTBUILDING



Whilst every attempt has been made to ensure the accuracy of the floor plan contained here, measurements of doors, windows, rooms and any other items are approximate and no responsibility is taken for any error, omission, or mis-statement. The plan is copyright to Simpson and Partners and is for illustrative purposes and should only be used as such by any prospective purchaser. The services, systems and appliances shown have not been tested and no guarantee as to their operability can be given.
Made with Metropix ©2024

When you buy with Simpson and Partners, you know **you'll be in safe hands**. From the moment you walk through our doors, we'll make you **feel truly welcome**. Our sales consultants and financial advisors will take you through **every step of the process**, offering **free expert advice** along the way, from help choosing the right mortgage and insurance through to finding your conveyancer. And if you need help selling your home too, **with over 20 years of local experience, you can trust us to get you moving**.



**Simpson
& Partners**

Making Every
Journey Personal



01536 518200

kettering@simpsonandpartners.co.uk

<https://www.simpsonandpartners.co.uk/>

1 Silver Street, Kettering, Northants, NN16 0BN