



47 Scott Avenue  
Kettering, NN14 6DH



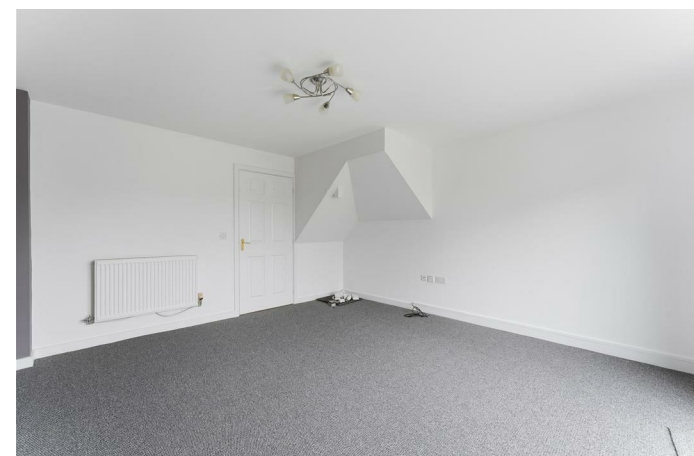
Simpson & Partners



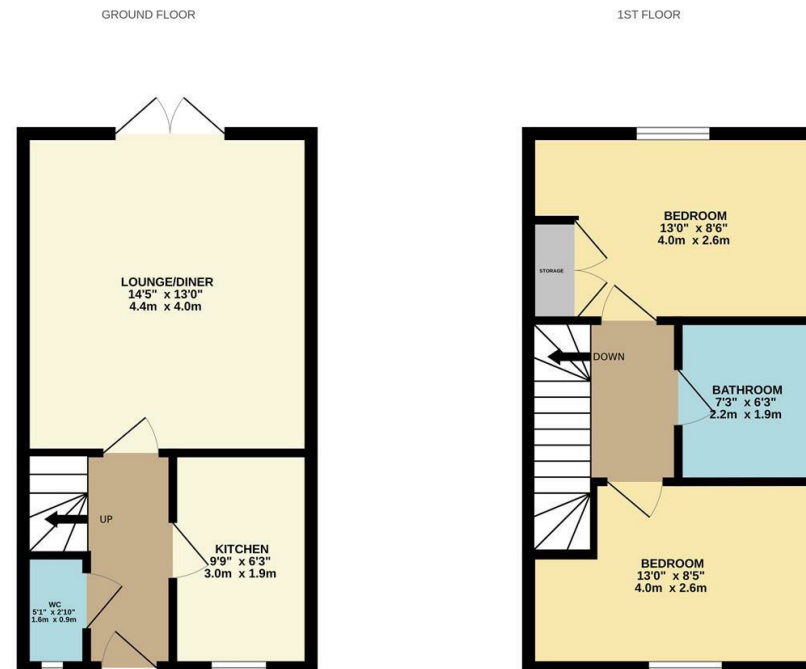
Simpson and Partners are delighted to offer to the rental market this super semi detached property ideally situated in the ever popular market town of Rothwell that enjoys excellent transport links and lots of local amenities. The very well presented accommodation comprises entrance hall, WC, modern fitted kitchen and spacious lounge/diner with patio doors to the rear garden. Upstairs there are two double bedrooms and family bathroom with shower over the bath. Externally there is a large rear garden mainly laid to lawn and single garage with parking. Unfurnished. Available NOW!!! EPC C.

Please note pets are not accepted.

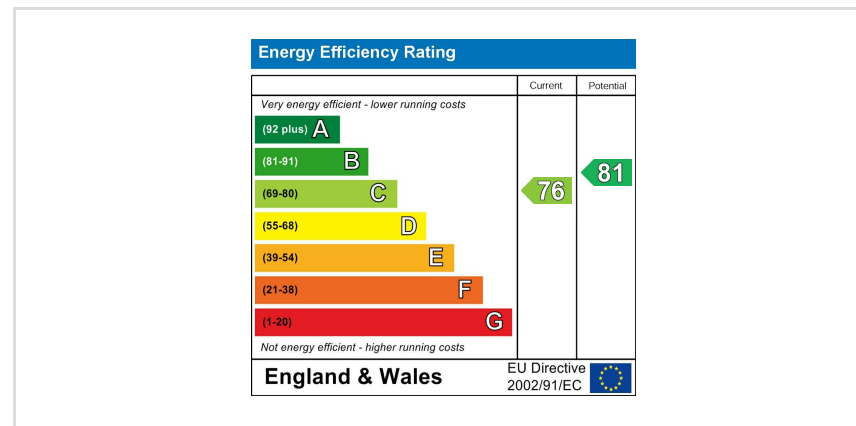
£1,150 PCM



Simpson & Partners



Whilst every attempt has been made to ensure the accuracy of the floorplan contained here, measurements of doors, windows, rooms and any other items are approximate and no responsibility is taken for any error, omission or mis-statement. This plan is for illustrative purposes only and should be used as such by any prospective purchaser. The services, systems and appliances shown have not been tested and no guarantee as to their operability or efficiency can be given.  
Made with Metropac ©2025



When you buy with Simpson and Partners, you know **you'll be in safe hands**. From the moment you walk through our doors, we'll make you **feel truly welcome**. Our sales consultants and financial advisors will take you through **every step of the process**, offering **free expert advice** along the way, from help choosing the right mortgage and insurance through to finding your conveyancer. And if you need help selling your home too, **with over 20 years of local experience, you can trust us to get you moving**.



**Simpson  
& Partners**

Making Every  
Journey Personal



01536 518200

[kettering@simpsonandpartners.co.uk](mailto:kettering@simpsonandpartners.co.uk)

<https://www.simpsonandpartners.co.uk/>

1 Silver Street, Kettering, Northants, NN16 0BN