



13 Morley Street

Kettering, Northamptonshire NN16 9LJ



**Simpson & Partners**



Simpson and Partners are proud to offer to the rental market this wonderfully presented family home situated in a popular residential road next to Kettering Pleasure Park. The very well presented property enjoys a wealth of period features and has accommodation comprising entrance hall, lovely spacious lounge / diner with bay window and feature fireplace, fabulous kitchen / breakfast room, utility and downstairs WC. Upstairs there are three generous sized bedrooms and super family bathroom with shower over the bath. Lovely landscaped enclosed rear garden and gated frontage. Unfurnished. Available NOW!!! EPC D. Please note should a small pet be considered the rent will be £25.00 extra pcm.

£1,200 PCM



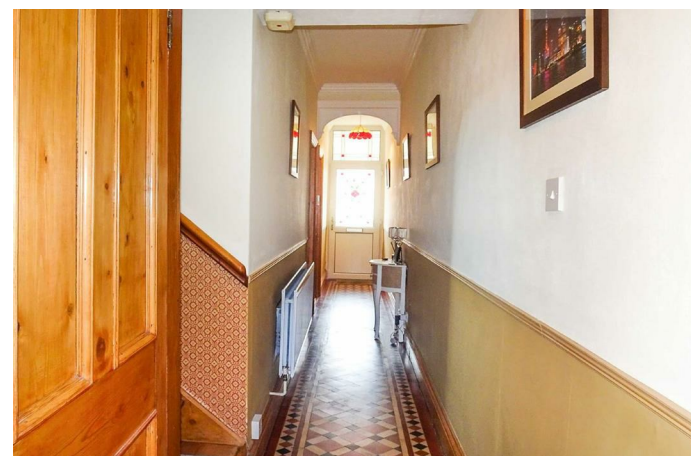
3

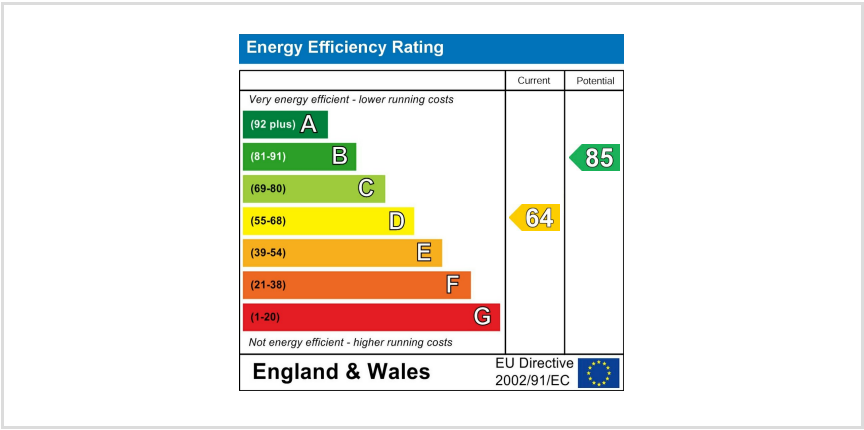


1



2







When you buy with Simpson and Partners, you know **you'll be in safe hands**. From the moment you walk through our doors, we'll make you **feel truly welcome**. Our sales consultants and financial advisors will take you through **every step of the process**, offering **free expert advice** along the way, from help choosing the right mortgage and insurance through to finding your conveyancer. And if you need help selling your home too, **with over 20 years of local experience, you can trust us to get you moving**.



**Simpson  
& Partners**

Making Every  
Journey Personal



01536 518200

[kettering@simpsonandpartners.co.uk](mailto:kettering@simpsonandpartners.co.uk)

<https://www.simpsonandpartners.co.uk/>

1 Silver Street, Kettering, Northants, NN16 0BN