



13 Gladstone Street  
Kettering, NN16 0TE



**Simpson & Partners**

**\*\* NO CHAIN\*\***

This well-presented three-bedroom terraced home is located on the ever-popular Gladstone Street, close to local amenities, schools, and excellent transport links.

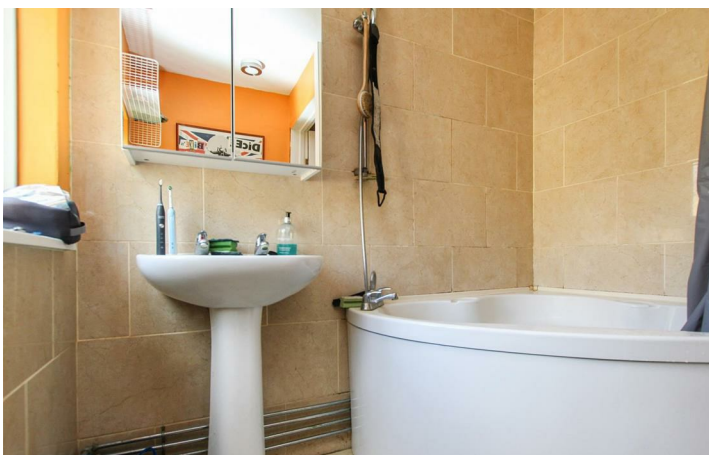
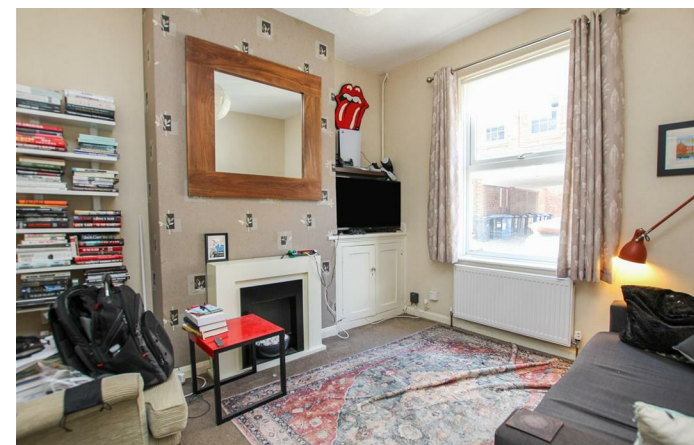
Downstairs, the property offers a welcoming living room, a separate dining room, and a well-equipped kitchen leading to a family bathroom.

Upstairs, there are three good-sized bedrooms, each offering ample space for family living.

Externally, the property benefits from an enclosed rear garden, perfect for relaxing or entertaining.

This home would make an ideal first-time purchase or investment opportunity. Early viewing is highly recommended.

Price £159,995





While every attempt has been made to ensure the accuracy of the floor plan contained here, measurements of these, windows, doors and all other items are approximate and no responsibility is taken for any error, omission, or misstatement. The plan is copyright to Simpson and Partners and is for illustrative purposes and should only be used as such by any prospective purchaser. The services, systems and appliances shown have not been tested and no guarantee as to their operability can be given. Made with Metrage 12/03



Energy Efficiency Rating		
	Current	Potential
<i>Very energy efficient - lower running costs</i>		
(92 plus) <b>A</b>		
(81-91) <b>B</b>		
(69-80) <b>C</b>		
(55-68) <b>D</b>		
(39-54) <b>E</b>		
(21-38) <b>F</b>		
(1-20) <b>G</b>		
<i>Not energy efficient - higher running costs</i>		
<b>England &amp; Wales</b>	EU Directive 2002/91/EC	



You may download, store and use the material for your own personal use and research. You may not republish, retransmit, redistribute or otherwise make the material available to any party or make the same available on any website, online service or bulletin board of your own or of any other party or make the same available in hard copy or in any other media without the website owner's express prior written consent. The website owner's copyright must remain on all reproductions of material taken from this website.

When you buy with Simpson and Partners, you know **you'll be in safe hands**. From the moment you walk through our doors, we'll make you **feel truly welcome**. Our sales consultants and financial advisors will take you through **every step of the process**, offering **free expert advice** along the way, from help choosing the right mortgage and insurance through to finding your conveyancer. And if you need help selling your home too, **with over 20 years of local experience, you can trust us to get you moving**.



**Simpson  
& Partners**

Making Every  
Journey Personal



01536 518200

[kettering@simpsonandpartners.co.uk](mailto:kettering@simpsonandpartners.co.uk)

<https://www.simpsonandpartners.co.uk/>

1 Silver Street, Kettering, Northants, NN16 0BN