



25 Montagu Street
Kettering, NN16 8XG



Simpson & Partners

Located within the vibrant town centre, this exceptional one bedroom first floor duplex apartment represents a stunning example of thoughtful conversion.

Originally serving as the working men's club, this grade II listed property has been recently transformed into beautiful modern apartments while preserving its historic character.

The apartment features a magnificent 16' kitchen/dining/living area that creates an open and spacious feel, complete with high-quality built-in appliances that blend seamlessly with the contemporary design.

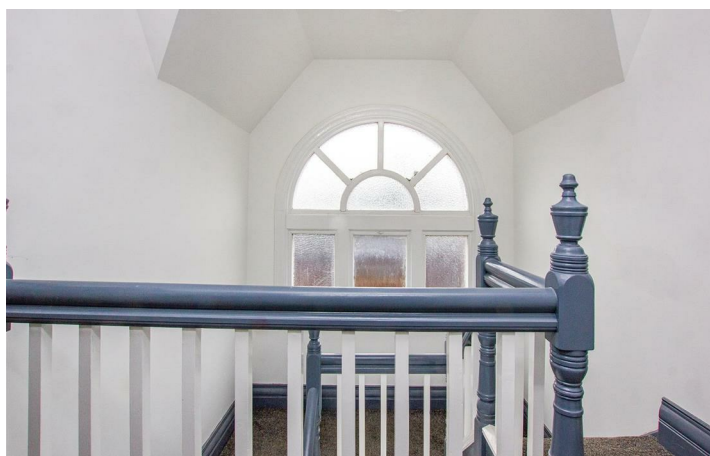
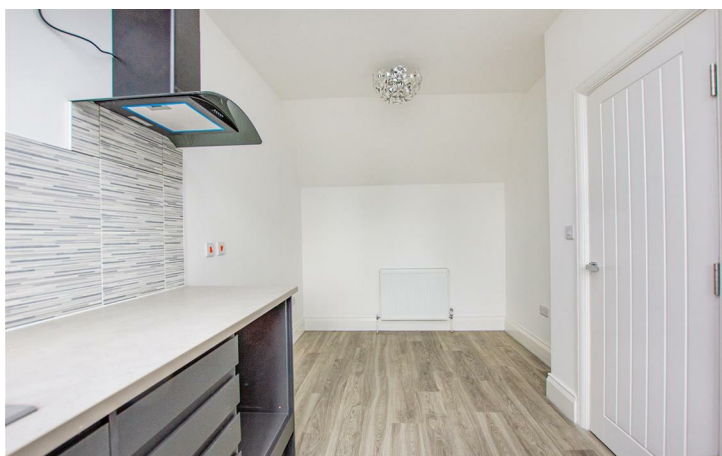
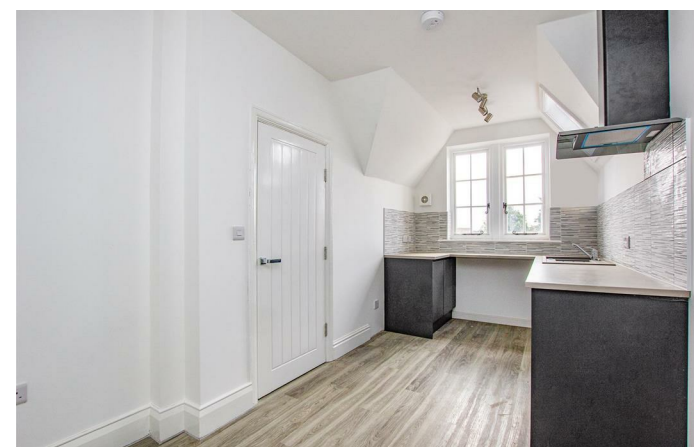
The comfortable double bedroom provides a peaceful retreat, while the luxury fitted three-piece shower room adds an element of sophistication and comfort.

In addition to electric radiator heating.

This superb apartment truly showcases how historic architecture can be sensitively adapted for modern living, and an internal viewing is essential to fully appreciate the quality of the conversion and the unique character this remarkable property offers.

Lease: 150 Years - Service Charge £725.60pa

Price £140,000

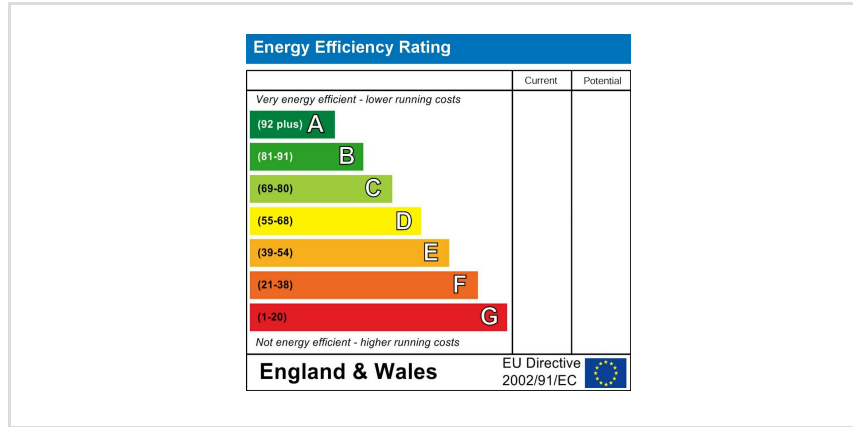


FIRST FLOOR

SECOND FLOOR



Whilst every attempt has been made to ensure the accuracy of the floor plan contained here, measurements of doors, windows, rooms and any other items are approximate and no responsibility is taken for any error, omission, or mis-statement. The plan is copyright to Simpson and Partners and is for illustrative purposes and should only be used as such by any prospective purchaser. The services, systems and appliances shown have not been tested and no guarantee as to their operability can be given.
Made with Metropix ©2025



When you buy with Simpson and Partners, you know **you'll be in safe hands**. From the moment you walk through our doors, we'll make you **feel truly welcome**. Our sales consultants and financial advisors will take you through **every step of the process**, offering **free expert advice** along the way, from help choosing the right mortgage and insurance through to finding your conveyancer. And if you need help selling your home too, **with over 20 years of local experience, you can trust us to get you moving**.



**Simpson
& Partners**

Making Every
Journey Personal



01536 518200

kettering@simpsonandpartners.co.uk

<https://www.simpsonandpartners.co.uk/>

1 Silver Street, Kettering, Northants, NN16 0BN