



5 Church Street
Burton Latimer, NN15 5LU



Simpson & Partners



Nestled in the heart of Burton Latimer, this beautifully presented three bedroom bay-fronted mid-terrace property offers spacious and flexible living accommodation, perfect for first time buyers, young families, or investors. The property also benefits from many original features to include cast iron fireplaces and stripped pine panelled internal doors

The ground floor features a light and airy living room open to the dining room, creating a welcoming and sociable space ideal for both relaxing and entertaining. The well appointed kitchen provides ample storage and worktop space. A modern and refitted family bathroom is also located on the ground floor.

Upstairs, the property offers three well proportioned bedrooms, with the third bedroom further benefitting from an en-suite- a rare find in this style of home.

Externally, the property enjoys a private rear garden, perfect for summer evenings or outdoor play.

Located close to local amenities, schools, and excellent transport links, this fantastic home combines character, convenience, and comfort.

Early viewing is advised to appreciate all this home has to offer.

 3  2  2

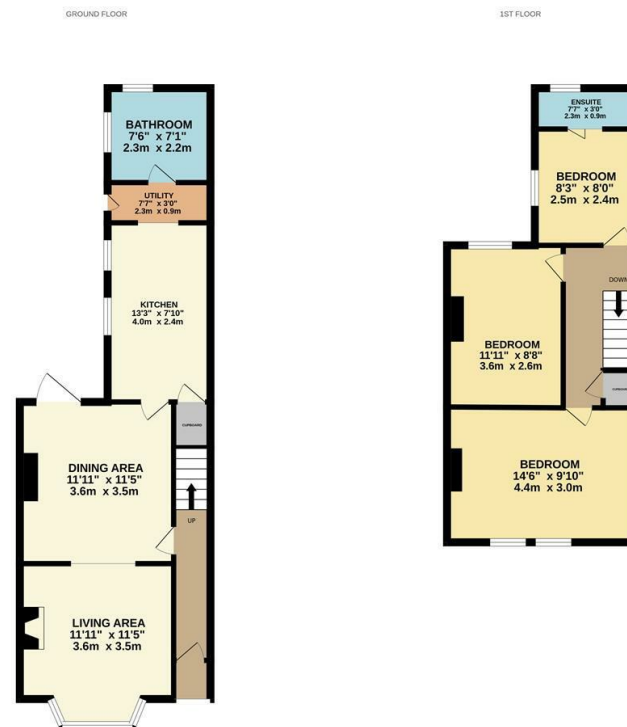
Price £245,000



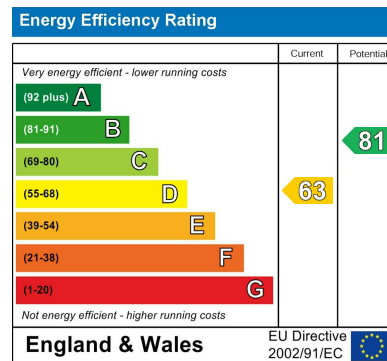








Whilst every effort has been made to ensure the accuracy of the floorplan contained here, measurements of doors, windows, rooms and any other items are approximate and no responsibility is taken for any error, omission or misstatement. This plan is for illustrative purposes only and should be used as such by any prospective purchaser. The services, systems and appliances shown have not been tested and no guarantee as to their operability or efficiency can be given.
Made with Floorplan 32025.



When you buy with Simpson and Partners, you know **you'll be in safe hands**. From the moment you walk through our doors, we'll make you **feel truly welcome**. Our sales consultants and financial advisors will take you through **every step of the process**, offering **free expert advice** along the way, from help choosing the right mortgage and insurance through to finding your conveyancer. And if you need help selling your home too, **with over 20 years of local experience, you can trust us to get you moving**.



**Simpson
& Partners**

Making Every
Journey Personal



01536 518200

kettering@simpsonandpartners.co.uk

<https://www.simpsonandpartners.co.uk/>

1 Silver Street, Kettering, Northants, NN16 0BN