



9 Bakehouse Lane
Kettering, NN15 5NJ



Simpson & Partners



Located on the charming Bakehouse Lane in the heart of Burton Latimer, this stunning three bedroom detached stone property has been tastefully refurbished by the current owners, seamlessly blending character features with modern comforts.

Upon entering, you're welcomed into a spacious living room boasting an exposed stone feature wall and patio doors to the rear garden- perfect for indoor-outdoor living. The generous kitchen offers ample space for cooking and storage, while a cosy snug area leads in to a bright office space. A versatile sun room, currently used as a dining room, completes the ground floor.

Upstairs, the property continues to impress with three generously sized bedrooms with built in wardrobes and a stylish, refitted bathroom featuring elegant gold hardware.

The outdoor space is equally impressive, with a large garden divided into multiple entertaining areas, enclosed by a beautiful bricked wall for privacy. A patio area is ideal for alfresco dining, while the extensive frontage offers plenty of parking and includes a garage.

Early viewing is highly recommended to appreciate the character and versatility this exceptional home has to offer.

 3

 1

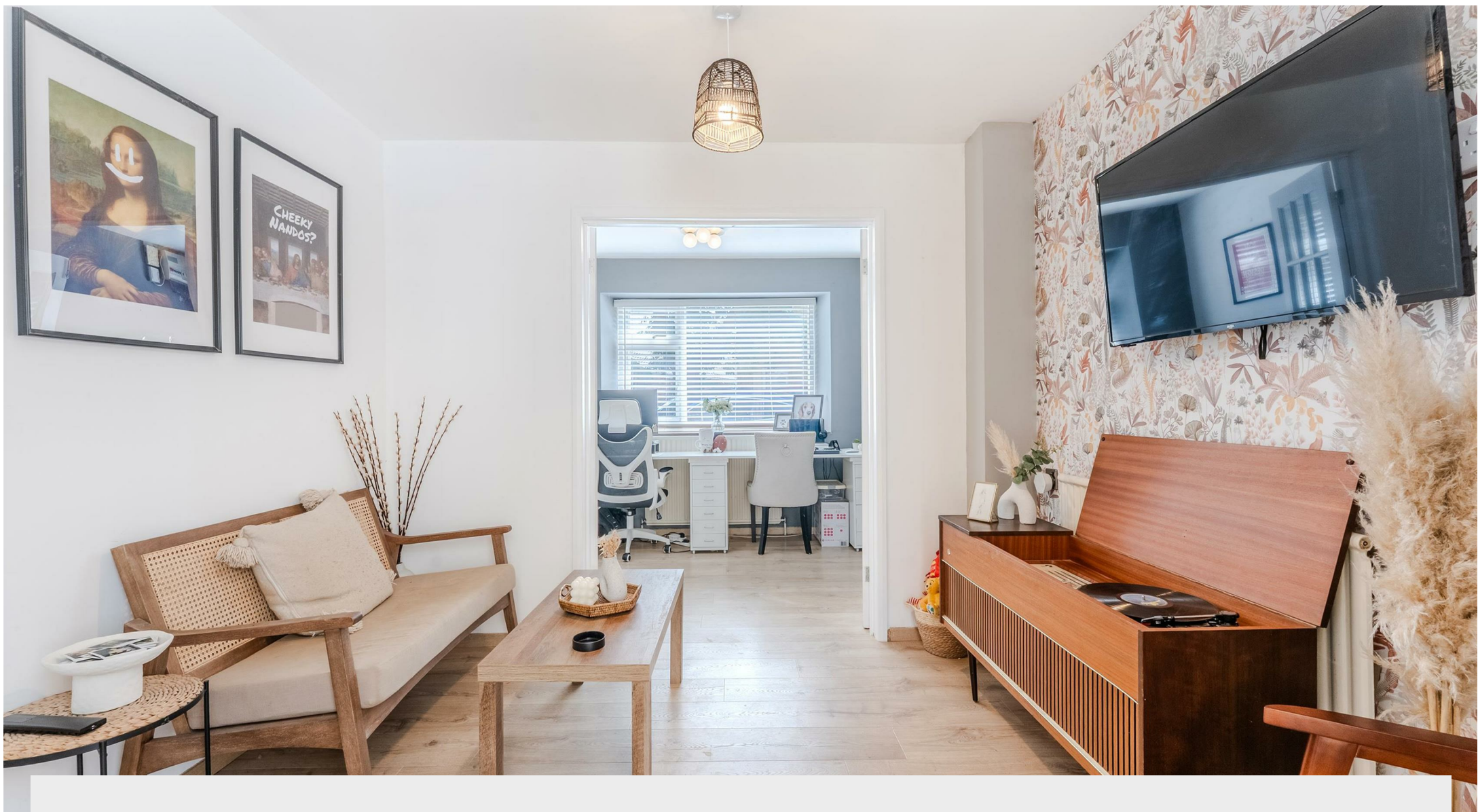
 3

£460,000

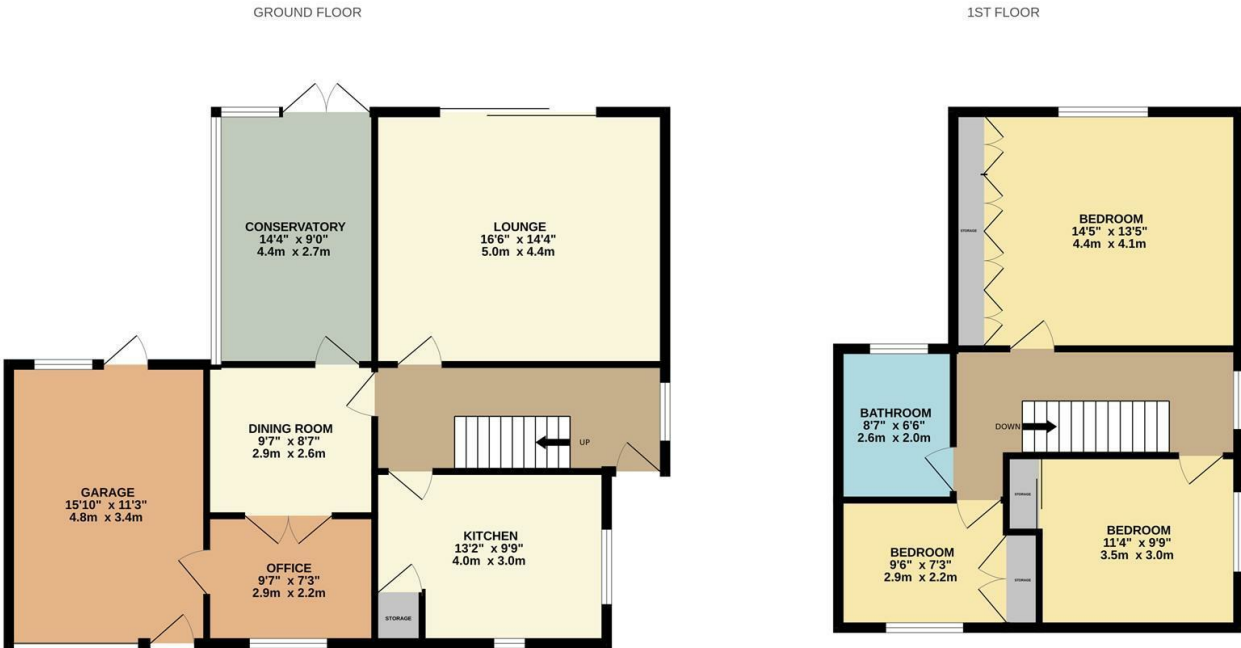




Simpson & Partners







When you buy with Simpson and Partners, you know **you'll be in safe hands**. From the moment you walk through our doors, we'll make you **feel truly welcome**. Our sales consultants and financial advisors will take you through **every step of the process**, offering **free expert advice** along the way, from help choosing the right mortgage and insurance through to finding your conveyancer. And if you need help selling your home too, **with over 20 years of local experience, you can trust us to get you moving**.



**Simpson
& Partners**

Making Every
Journey Personal



01536 518200

kettering@simpsonandpartners.co.uk

<https://www.simpsonandpartners.co.uk/>

1 Silver Street, Kettering, Northants, NN16 0BN