



9 Gardeners Crescent
Kettering, NN16 9GR



Simpson & Partners

This exceptional 40% shared ownership property presents a wonderful opportunity for homebuyers seeking quality accommodation within convenient reach of the town centre and all essential local amenities. The property showcases superb presentation throughout, featuring the benefits of UPVC double glazing and efficient gas radiator heating for year round comfort.

The thoughtfully designed accommodation flows seamlessly from the welcoming entrance hall into a comfortable lounge, perfect for relaxation and entertaining. The heart of the home is the well-appointed kitchen and dining room, which comes complete with integrated appliances and provides direct access to the rear garden, creating an ideal space for both everyday living and hosting guests.

Ascending to the first floor reveals two bedrooms, offering flexible living arrangements for families or professional couples, alongside a luxuriously fitted bathroom suite that adds a touch of elegance to the daily routine. The outdoor space is equally impressive, featuring a rear garden with an attractive paved seating area that's perfect for al fresco dining and relaxation during warmer months.

Practical considerations are well catered for with the inclusion of an allocated parking space, ensuring convenience and peace of mind for residents. This superb property truly deserves an internal viewing to fully appreciate the quality of presentation and the excellent standard of accommodation on offer, making it an ideal choice for those looking to step onto or move up the property ladder through the shared ownership scheme.

Rent for remaining share £318.33

Lease details 125 years from 23rd Feb 2012 - 110 years remaining.

Price £86,000



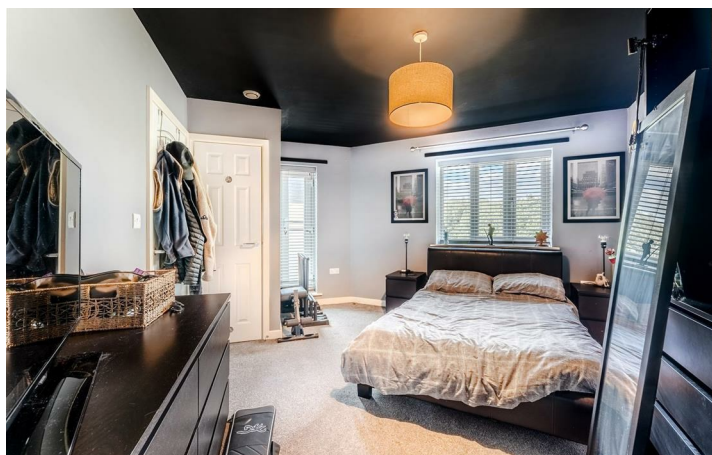
2



1

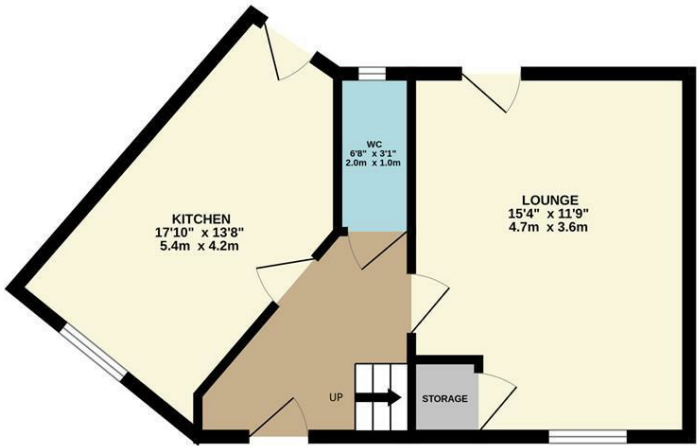


1

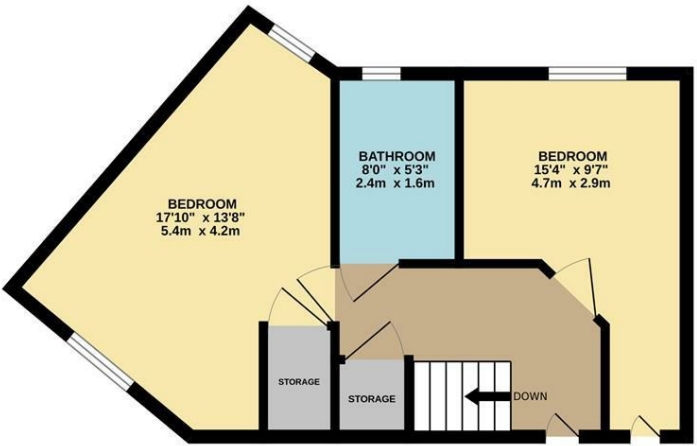


Simpson & Partners

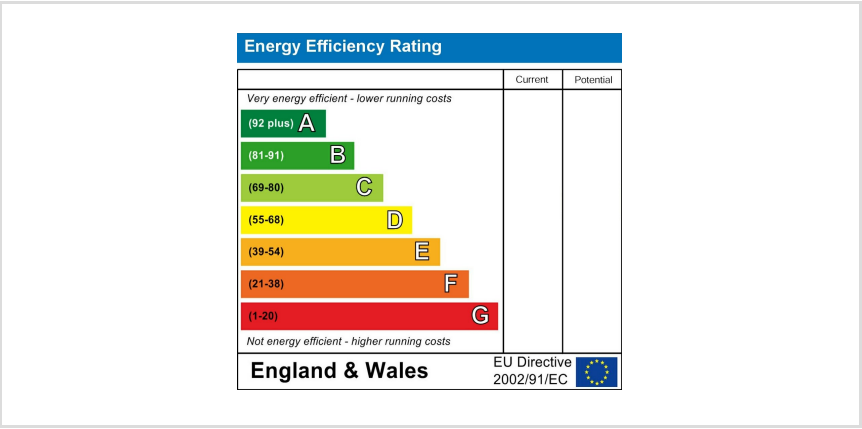
GROUND FLOOR



1ST FLOOR



Whilst every attempt has been made to ensure the accuracy of the floorplan contained here, measurements of doors, windows, rooms and any other items are approximate and no responsibility is taken for any error, omission or mis-statement. This plan is for illustrative purposes only and should be used as such by any prospective purchaser. The services, systems and appliances shown have not been tested and no guarantee as to their operability or efficiency can be given.
Made with Metropix ©2025



When you buy with Simpson and Partners, you know **you'll be in safe hands**. From the moment you walk through our doors, we'll make you **feel truly welcome**. Our sales consultants and financial advisors will take you through **every step of the process**, offering **free expert advice** along the way, from help choosing the right mortgage and insurance through to finding your conveyancer. And if you need help selling your home too, **with over 20 years of local experience, you can trust us to get you moving**.



**Simpson
& Partners**

Making Every
Journey Personal



01536 518200

kettering@simpsonandpartners.co.uk

<https://www.simpsonandpartners.co.uk/>

1 Silver Street, Kettering, Northants, NN16 0BN