



4 Ladybower Close  
Kettering, NN16 8LU



**Simpson & Partners**



Located just a few minutes' walk from Kettering General Hospital, this superbly presented two-bedroom semi-detached property offers exceptional living in show home condition. With the convenience of Kettering town centre and mainline railway station only a short drive away, this residence combines perfect location with outstanding features.

The property boasts comprehensive double glazing and efficient gas radiator central heating. The heart of the home is the luxury fitted kitchen/dining room, complete with high-quality built-in and integrated appliances, elegantly connected to the Westerly facing rear garden. The bathroom showcases a luxury fitted suite that exudes sophistication and comfort.

Both the front and rear gardens have been professionally landscaped, enhancing the property's curb appeal and outdoor enjoyment. A unique feature is the single garage that has been creatively repurposed as a bar, offering an exceptional entertainment space.

The thoughtfully designed accommodation comprises a welcoming lounge and the kitchen/dining room on the ground floor, while the first floor houses two well-proportioned bedrooms and the bathroom. To truly appreciate this stunning home in all its glory, an internal viewing is absolutely essential.

Energy Rating C/69 - Council Tax Band B.

Price £235,000



2



1

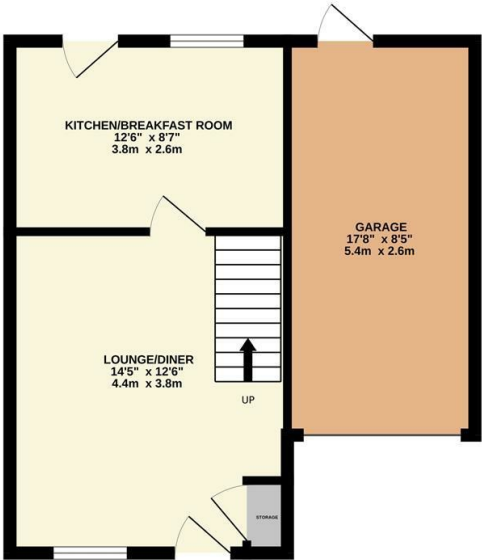


1

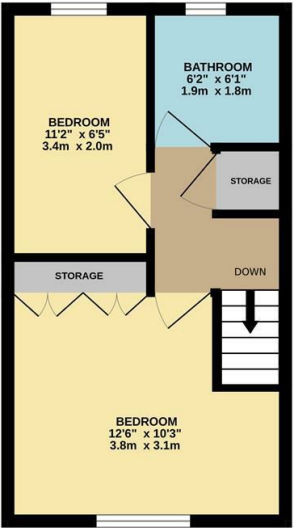


Simpson & Partners

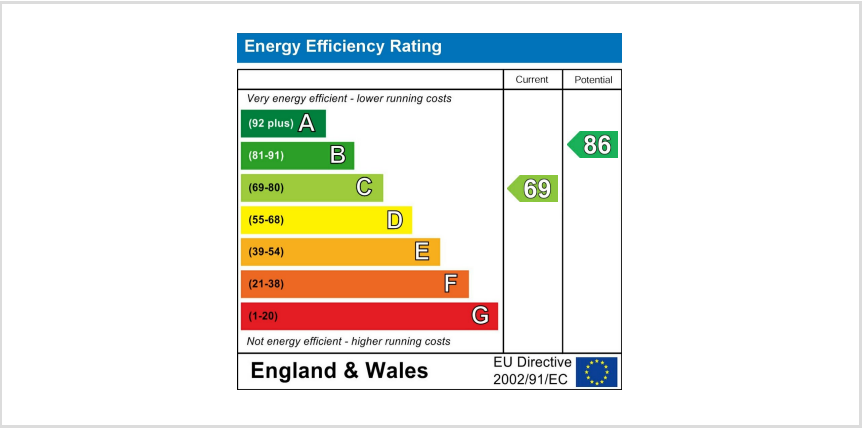
GROUND FLOOR



1ST FLOOR



Whilst every attempt has been made to ensure the accuracy of the floorplan contained here, measurements of doors, windows, rooms and any other items are approximate and no responsibility is taken for any error, omission or mis-statement. This plan is for illustrative purposes only and should be used as such by any prospective purchaser. The services, systems and appliances shown have not been tested and no guarantee as to their operability or efficiency can be given.  
Made with Metropix (2025)





When you buy with Simpson and Partners, you know **you'll be in safe hands**. From the moment you walk through our doors, we'll make you **feel truly welcome**. Our sales consultants and financial advisors will take you through **every step of the process**, offering **free expert advice** along the way, from help choosing the right mortgage and insurance through to finding your conveyancer. And if you need help selling your home too, **with over 20 years of local experience, you can trust us to get you moving**.



**Simpson  
& Partners**

Making Every  
Journey Personal



01536 518200

[kettering@simpsonandpartners.co.uk](mailto:kettering@simpsonandpartners.co.uk)

<https://www.simpsonandpartners.co.uk/>

1 Silver Street, Kettering, Northants, NN16 0BN