



21 Desborough Road
Rothwell, NN14 6JG



Simpson & Partners

We are delighted to present a stunning two double bedroom semi-detached property that boasts a beautifully landscaped rear garden with a Westerly facing aspect. This charming property benefits from a range of desirable features, including UPVC double glazing and gas radiator central heating, ensuring a warm living space.

The heart of the home is the luxury fitted white high gloss kitchen, complete with built-in and integrated appliances, perfect for culinary enthusiasts. The lounge and dining room are both beautifully appointed, each with working open fireplaces, ideal for cozying up on chilly evenings.

The property's accommodating layout comprises an entrance porch, entrance hall, dining room, sitting room, kitchen, and a rear porch, providing space for relaxation and entertainment. Ascending to the first floor, you will discover two generously sized double bedrooms and a sumptuous four-piece bathroom suite, carefully designed to provide a serene and luxurious retreat.

This exceptional property is a must-see, and we highly recommend an internal viewing to truly appreciate its many charms and stunning features.

Price £230,000



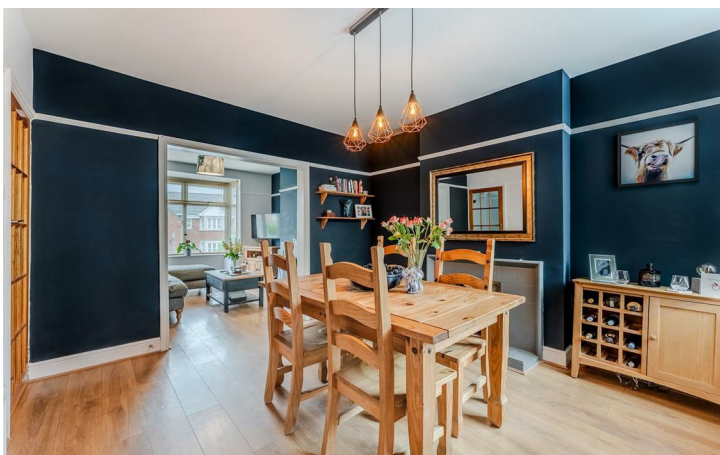
2



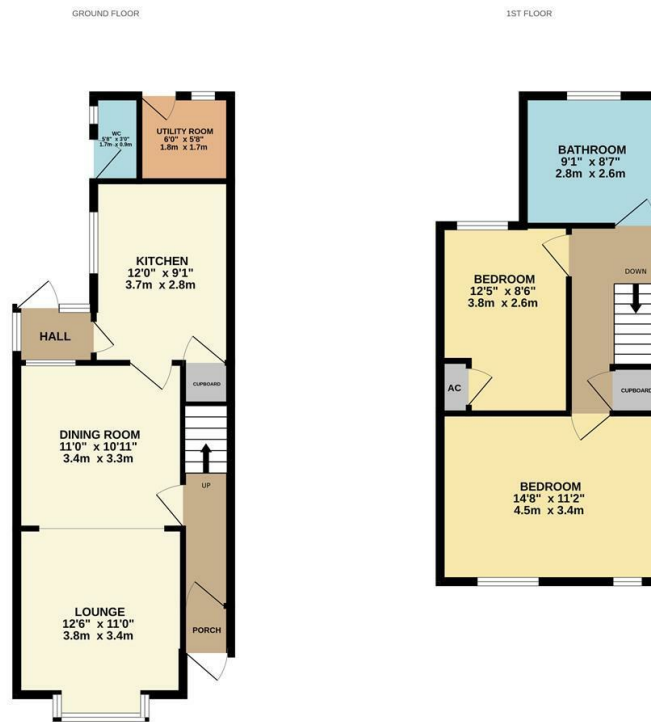
1



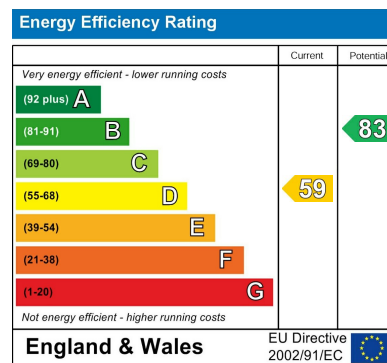
2



Simpson & Partners



Whilst every attempt has been made to ensure the accuracy of the description contained here, measurements of doors, windows, rooms and any other items are approximate and no responsibility is taken for any error, omission or mis-statement. This plan is for illustrative purposes only and should be used as such for any prospective purchase. The services, systems and appliances shown have not been tested and no guarantee as to their operability or efficiency can be given.
Made with MyPlan 62020



When you buy with Simpson and Partners, you know **you'll be in safe hands**. From the moment you walk through our doors, we'll make you **feel truly welcome**. Our sales consultants and financial advisors will take you through **every step of the process**, offering **free expert advice** along the way, from help choosing the right mortgage and insurance through to finding your conveyancer. And if you need help selling your home too, **with over 20 years of local experience, you can trust us to get you moving**.



**Simpson
& Partners**

Making Every
Journey Personal



01536 518200

kettering@simpsonandpartners.co.uk

<https://www.simpsonandpartners.co.uk/>

1 Silver Street, Kettering, Northants, NN16 0BN