



1 Tweed Close
Burton Latimer, NN15 5SU



Simpson & Partners

Exceptional Family Home in Burton Latimer Offer For Sale With No Onward Chain!

Located in the popular town of Burton Latimer, this well presented four bedroom extended semi-detached property that offers the perfect blend of comfort and convenience. Situated within a short distance of the town centre and other local amenities, this superb family home provides easy access to everything you need.

The property boasts an impressive 23' living room perfect for family gatherings, complemented by a separate dining room ideal for entertaining guests. The 14' kitchen comes complete with built-in appliances, making meal preparation a breeze. Bedroom one is a generous 17' and features a dedicated dressing area with built in wardrobes, along with a luxurious en-suite shower room. Three additional bedrooms all benefit from fitted/built-in wardrobes, offering storage space. The family's needs are further served by a three-piece family bathroom.

Throughout the home, you'll appreciate the comfort provided by UPVC double glazing and gas warm air central heating. Outside, the property offers attractive front and rear gardens, convenient off-road parking, and a single integral garage with remote control roller door.

An internal viewing is absolutely essential to truly appreciate all this exceptional family home has to offer.

Council Tax Band B - Energy Rating D/59

Price £325,000



4



2



1

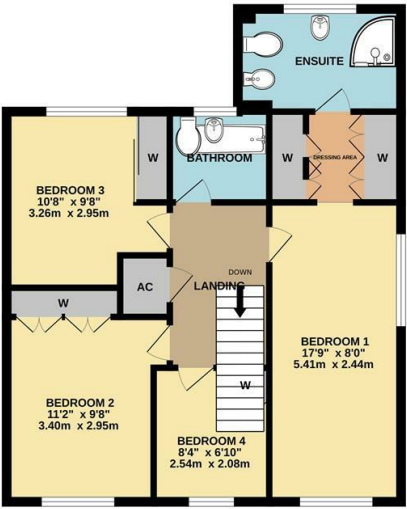


Simpson & Partners

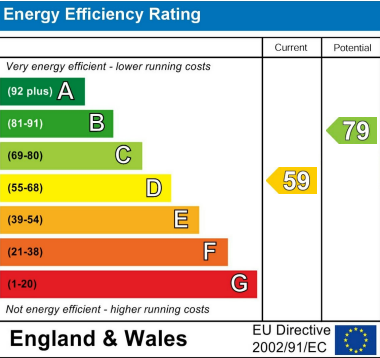
GROUND FLOOR



1ST FLOOR



Whilst every attempt has been made to ensure the accuracy of the floor plan contained here, measurements of doors, windows, rooms and any other items are approximate and no responsibility is taken for any error, omission, or mis-statement. The plan is copyright to Simpson and Plattens and is for illustrative purposes and should only be used as such by any prospective purchaser. The services, systems and appliances shown have not been tested and no guarantee as to their operability can be given.
Made with Metropia 02025



When you buy with Simpson and Partners, you know **you'll be in safe hands**. From the moment you walk through our doors, we'll make you **feel truly welcome**. Our sales consultants and financial advisors will take you through **every step of the process**, offering **free expert advice** along the way, from help choosing the right mortgage and insurance through to finding your conveyancer. And if you need help selling your home too, **with over 20 years of local experience, you can trust us to get you moving**.



**Simpson
& Partners**

Making Every
Journey Personal



01536 518200

kettering@simpsonandpartners.co.uk

<https://www.simpsonandpartners.co.uk/>

1 Silver Street, Kettering, Northants, NN16 0BN