



13 Foundry Avenue
Kettering, NN15 5FN



Simpson & Partners



Situated on the Hanwood Park development is this fantastic four bedroom detached property, located on a larger than average plot with off road parking.

Upon entering the property you will find a large living room, a beautiful kitchen/ diner with patio doors to rear, w/c and a separate study.

To the first floor are four good sized bedrooms, with the master bedroom further benefitting from an en-suite, and also a family bathroom.

Externally the property has a large enclosed garden, off road parking for a couple of cars.

Contact us today to arrange a viewing!

 4

 2

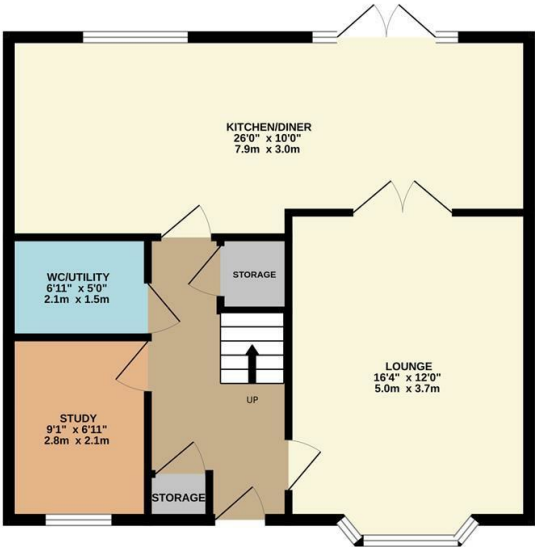
 2

£375,000

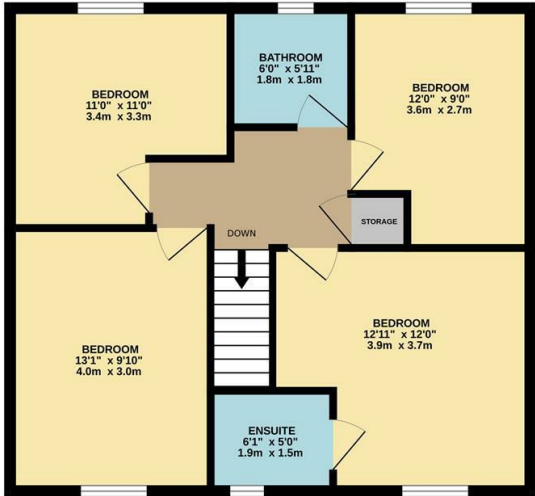




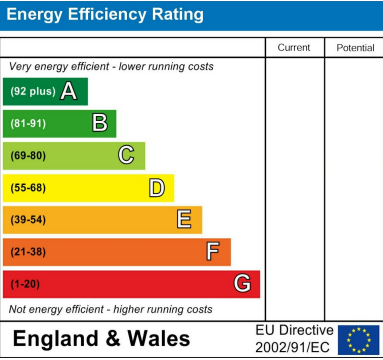
GROUND FLOOR



1ST FLOOR



Whilst every attempt has been made to ensure the accuracy of the floorplan contained here, measurements of doors, windows, rooms and any other items are approximate and no responsibility is taken for any error, omission or mis-statement. This plan is for illustrative purposes only and should be used as such by any prospective purchaser. The services, systems and appliances shown have not been tested and no guarantee as to their operability or efficiency can be given.
Made with Metropix ©2025



When you buy with Simpson and Partners, you know **you'll be in safe hands**. From the moment you walk through our doors, we'll make you **feel truly welcome**. Our sales consultants and financial advisors will take you through **every step of the process**, offering **free expert advice** along the way, from help choosing the right mortgage and insurance through to finding your conveyancer. And if you need help selling your home too, **with over 20 years of local experience, you can trust us to get you moving**.



**Simpson
& Partners**

Making Every
Journey Personal



01536 518200

kettering@simpsonandpartners.co.uk

<https://www.simpsonandpartners.co.uk/>

1 Silver Street, Kettering, Northants, NN16 0BN