



3. Fernie Close  
Barton Seagrave, NN15 6RE



Simpson & Partners



Located in the highly sought-after village of Barton Seagrave, this beautifully extended four bedroom semi detached property presents an ideal opportunity for families seeking a blend of comfort and convenience. The home is perfectly positioned with easy access to Barton Seagrave Primary School and a range of local amenities, making it a prime location for family life.

Upon entering, you are greeted by a spacious and welcoming atmosphere. The ground floor boasts a 20' kitchen/breakfast room, designed to be the heart of the home, where family and friends can gather for meals and socializing. This space is complemented by a generous 14' sitting room, offering a cozy retreat for relaxation. For those who love to entertain, the 19' dining room provides space for hosting dinner parties or family gatherings.

Practicality is key, with a convenient downstairs shower room and WC catering to the needs of a busy household. Upstairs, the property features four bedrooms, each offering a peaceful sanctuary for rest. The stylish bathroom is equipped with a classic roll-top suite, adding a touch of elegance to the home.

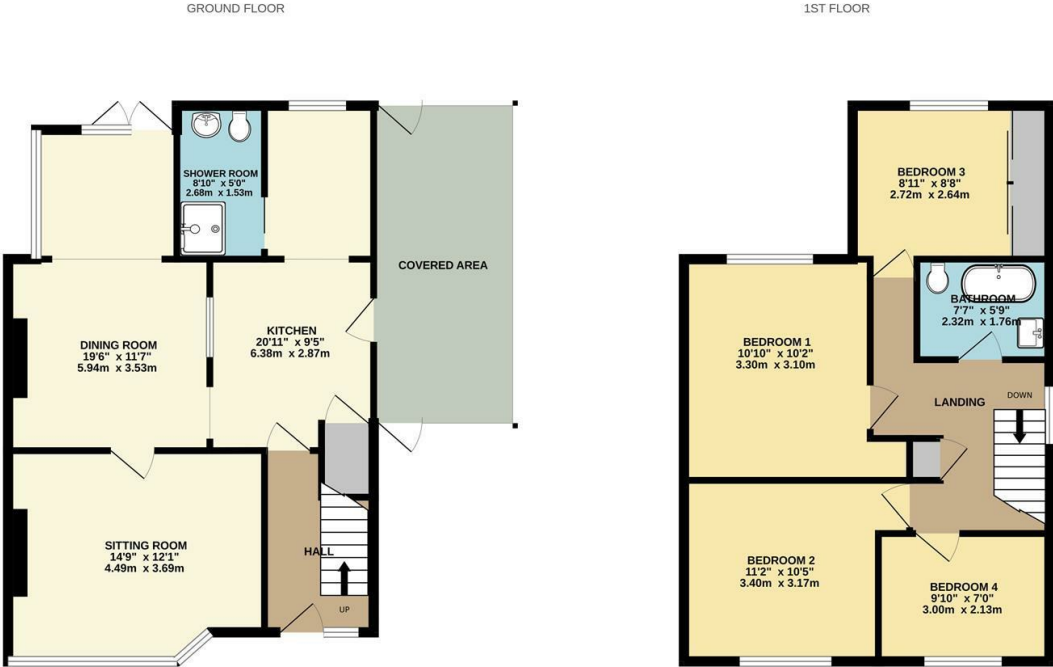
The property benefits from modern comforts such as double glazing and efficient gas radiator heating, ensuring a warm and inviting environment throughout the year. Externally, the home is complemented by both front and rear gardens, providing outdoor spaces for relaxation, play, or gardening enthusiasts.

Additionally, the property offers off-road parking, a valuable asset in this popular area. Given its desirable location and extensive features, an internal viewing is highly recommended to truly appreciate the quality and potential of this home. Act quickly to avoid any disappointment!

Council Tax Band C - Energy Rating C/70

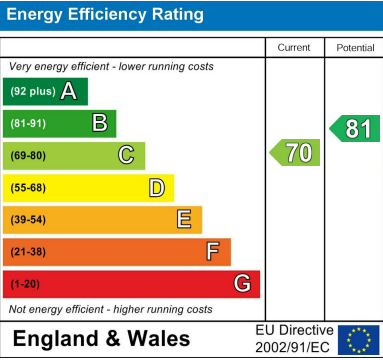
£325,000





Whilst every attempt has been made to ensure the accuracy of the floor plan contained here, measurements of doors, windows, rooms and any other items are approximate and no responsibility is taken for any error, omission, or mis-statement. The plan is copyright to Simpson and Partners and is for illustrative purposes and should only be used as such by any prospective purchaser. The services, systems and appliances shown have not been tested and no guarantee as to their operability can be given

Made with Metropix ©2025





When you buy with Simpson and Partners, you know **you'll be in safe hands**. From the moment you walk through our doors, we'll make you **feel truly welcome**. Our sales consultants and financial advisors will take you through **every step of the process**, offering **free expert advice** along the way, from help choosing the right mortgage and insurance through to finding your conveyancer. And if you need help selling your home too, **with over 20 years of local experience, you can trust us to get you moving**.



**Simpson  
& Partners**

Making Every  
Journey Personal



01536 518200

[kettering@simpsonandpartners.co.uk](mailto:kettering@simpsonandpartners.co.uk)

<https://www.simpsonandpartners.co.uk/>

1 Silver Street, Kettering, Northants, NN16 0BN