



11 Westmorland Drive
Desborough, NN14 2XB



Simpson & Partners

Nestled within walking distance of the vibrant town centre, this extended three bedroom detached property is a true gem. Occupying a prime corner plot, the home offers a perfect blend of convenience and tranquility. With block-paved off road parking available at the front and additional parking space at the rear, this property is ideal for accommodating multiple vehicles.

As you step inside, you're greeted by a welcoming entrance hall that sets the tone for the well designed layout. The ground floor boasts a generous 14' living room, complete with a charming feature fireplace that creates a cozy focal point. This space seamlessly flows into the 17' kitchen/dining room, where you'll find modern built-in appliances that cater to all your culinary needs.

The property further benefits from a versatile downstairs shower room, which also serves as a utility room, offering practicality and functionality. One of the standout features of this home is the expansive 14' conservatory, which floods the space with natural light and provides a perfect setting for relaxation or entertaining guests.

Ascending to the first floor, you'll discover three bedrooms. The primary and second bedrooms are enhanced by built-in wardrobes, providing storage solutions. A contemporary three-piece bathroom suite completes the first floor, offering a stylish and comfortable space for unwinding.

Additional features of this impressive home include UPVC double glazing and efficient gas radiator heating, ensuring comfort and energy efficiency throughout the year. The thoughtful design and attention to detail make this property an ideal family home.

To truly appreciate the quality and charm of this property, an internal viewing is highly recommended. Don't miss the opportunity to make this delightful home your own, as interest is expected to be high.

Council Tax Band C - Energy Rating D/67

Price £284,000



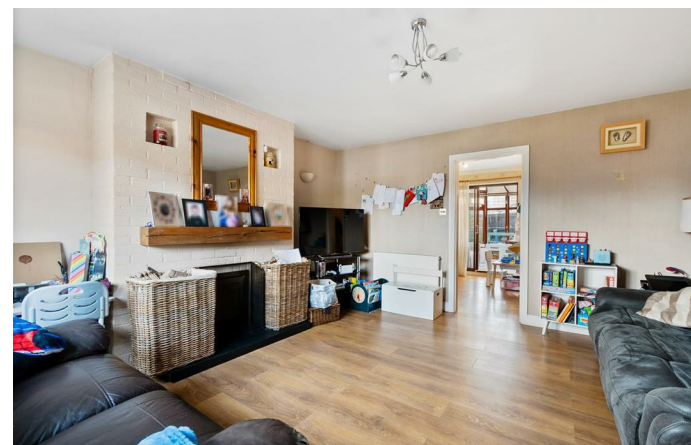
3

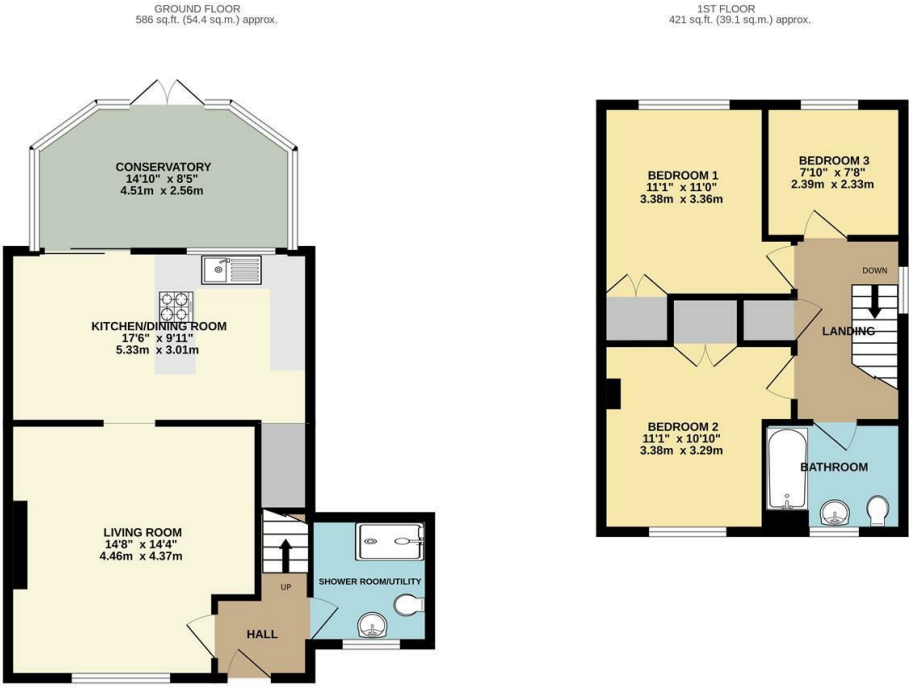


2



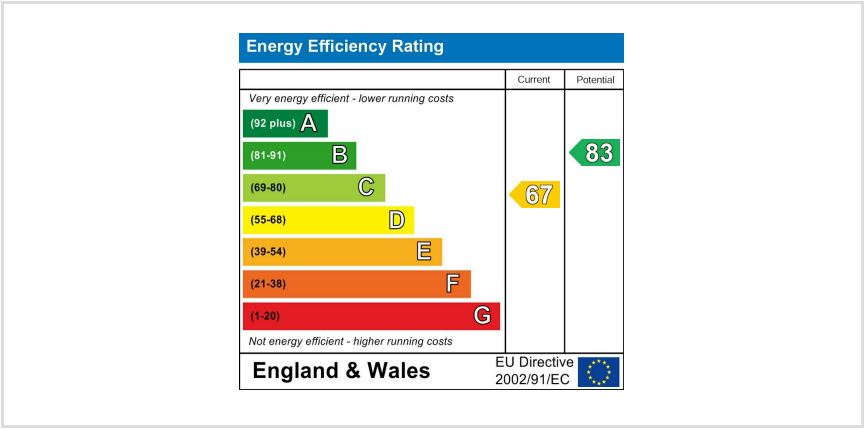
2





TOTAL FLOOR AREA: 1007 sq.ft. (93.5 sq.m.) approx.

Whilst every attempt has been made to ensure the accuracy of the floor plan contained here, measurements of doors, windows, rooms and any other items are approximate and no responsibility is taken for any error, omission, or mis-statement. The plan is copyright to Simpson and Partners and is for illustrative purposes and should only be used as such by any prospective purchaser. The services, systems and appliances shown have not been tested and no guarantee as to their operability can be given.
Made with Metreque ©2025



When you buy with Simpson and Partners, you know **you'll be in safe hands**. From the moment you walk through our doors, we'll make you **feel truly welcome**. Our sales consultants and financial advisors will take you through **every step of the process**, offering **free expert advice** along the way, from help choosing the right mortgage and insurance through to finding your conveyancer. And if you need help selling your home too, **with over 20 years of local experience, you can trust us to get you moving**.



**Simpson
& Partners**

Making Every
Journey Personal



01536 518200

kettering@simpsonandpartners.co.uk

<https://www.simpsonandpartners.co.uk/>

1 Silver Street, Kettering, Northants, NN16 0BN